



[Go to Product page](#)

Datasheet for ABIN7154769

anti-GUCY1A1 antibody (AA 20-152)

4 Images

Overview

Quantity:	100 µg
Target:	GUCY1A1
Binding Specificity:	AA 20-152
Reactivity:	Human
Host:	Rabbit
Clonality:	Polyclonal
Conjugate:	This GUCY1A1 antibody is un-conjugated
Application:	ELISA, Immunohistochemistry (IHC), Immunofluorescence (IF)

Product Details

Immunogen:	Recombinant Human Guanylate cyclase soluble subunit alpha-1 protein (20-152AA)
Isotype:	IgG
Cross-Reactivity:	Human
Purification:	>95%, Protein G purified

Target Details

Target:	GUCY1A1
Alternative Name:	GUCY1A1 (GUCY1A1 Products)
Background:	Background: guanylate cyclase complex, soluble, plasma membrane, guanylate cyclase activity, receptor activity, blood circulation, cGMP biosynthetic process, nitric oxide mediated signal

Target Details

transduction

Aliases: GC S alpha 1 antibody, GC SA3 antibody, GCS alpha 1 antibody, GCS alpha 3 antibody, GCS-alpha-1 antibody, GCS-alpha-3 antibody, GCYA3_HUMAN antibody, Guanylate cyclase 1 soluble alpha 3 antibody, Guanylate cyclase soluble subunit alpha 1 antibody, Guanylate cyclase soluble subunit alpha 3 antibody, Guanylate cyclase soluble subunit alpha-3 antibody, Guanylate cyclase, nitric oxide-sensitive, alpha-1 subunit antibody, Guc1a1 antibody, GUC1A3 antibody, GUCA3 antibody, GUCSA3 antibody, Gucy1a1 antibody, Gucy1a3 antibody, MYMY6 antibody, nitric oxide-sensitive Guanylate cyclase, alpha-1 subunit antibody, NOGC, alpha-1 subunit antibody, Soluble guanylate cyclase large subunit antibody

UniProt: [Q02108](#)

Pathways: [Myometrial Relaxation and Contraction](#)

Application Details

Application Notes: Recommended dilution: IHC:1:20-1:200, IF:1:50-1:200,

Restrictions: For Research Use only

Handling

Format: Liquid

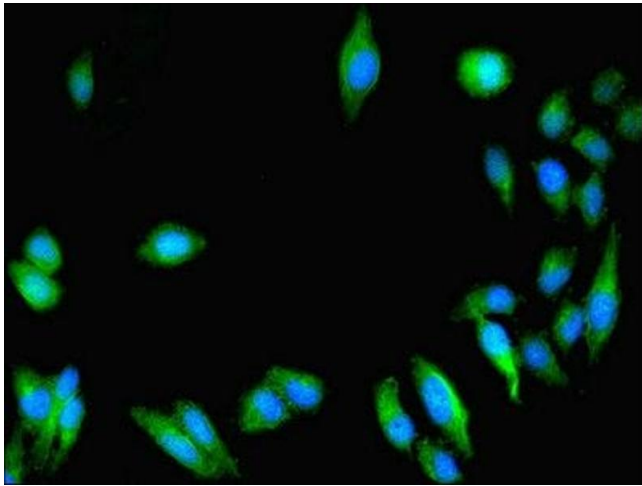
Buffer: Preservative: 0.03 % Proclin 300
Constituents: 50 % Glycerol, 0.01M PBS, PH 7.4

Preservative: ProClin

Precaution of Use: This product contains ProClin: a POISONOUS AND HAZARDOUS SUBSTANCE which should be handled by trained staff only.

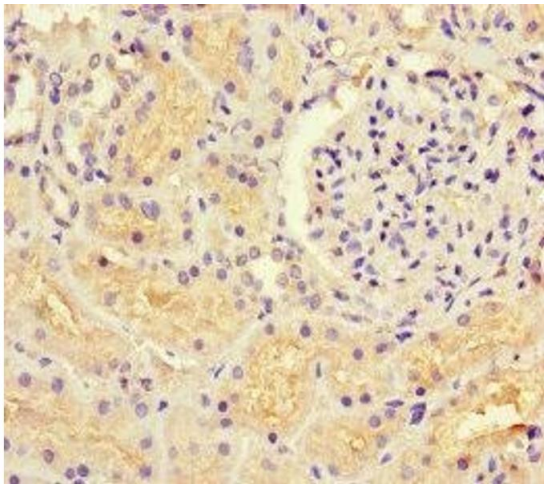
Storage: -20 °C,-80 °C

Storage Comment: Upon receipt, store at -20°C or -80°C. Avoid repeated freeze.



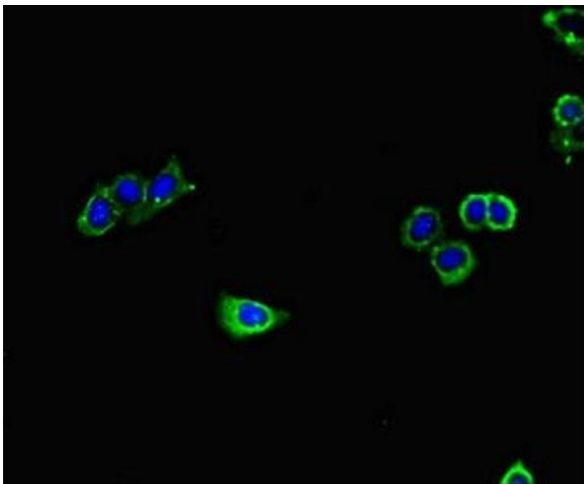
Immunofluorescence

Image 1. Immunofluorescent analysis of HeLa cells using ABIN7154769 at dilution of 1:100 and Alexa Fluor 488-conjugated AffiniPure Goat Anti-Rabbit IgG(H+L)



Immunohistochemistry

Image 2. Immunohistochemistry of paraffin-embedded human kidney tissue using ABIN7154769 at dilution of 1:100



Immunofluorescence

Image 3. Immunofluorescent analysis of HepG2 cells using ABIN7154769 at dilution of 1:100 and Alexa Fluor 488-conjugated AffiniPure Goat Anti-Rabbit IgG(H+L)

Please check the [product details page](#) for more images. Overall 4 images are available for ABIN7154769.