



[Go to Product page](#)

Datasheet for ABIN7154797
anti-CLCN7 antibody (AA 626-805)

1 Image

Overview

Quantity:	100 µL
Target:	CLCN7
Binding Specificity:	AA 626-805
Reactivity:	Human
Host:	Rabbit
Clonality:	Polyclonal
Conjugate:	This CLCN7 antibody is un-conjugated
Application:	ELISA, Immunohistochemistry (IHC)

Product Details

Immunogen:	Recombinant Human H(+)/Cl(-) exchange transporter 7 protein (626-805AA)
Isotype:	IgG
Cross-Reactivity:	Human
Purification:	Antigen Affinity Purified

Target Details

Target:	CLCN7
Alternative Name:	CLCN7 (CLCN7 Products)
Background:	Background: Slowly voltage-gated channel mediating the exchange of chloride ions against protons. Functions as antiporter and contributes to the acidification of the lysosome lumen.

Target Details

Aliases: Chloride channel protein 7 antibody, CLC 7 antibody, CLC-7 antibody, CLC7 antibody, CLCN7 antibody, CLCN7_HUMAN antibody, FLJ26686 antibody, FLJ39644 antibody, FLJ46423 antibody, H(+)/Cl(-) exchange transporter 7 antibody, OPTA2 antibody, OPTB4 antibody

UniProt: [P51798](#)

Application Details

Application Notes: Recommended dilution: IHC:1:20-1:200,

Restrictions: For Research Use only

Handling

Format: Liquid

Buffer: PBS with 0.02 % sodium azide, 50 % glycerol, pH 7.3.

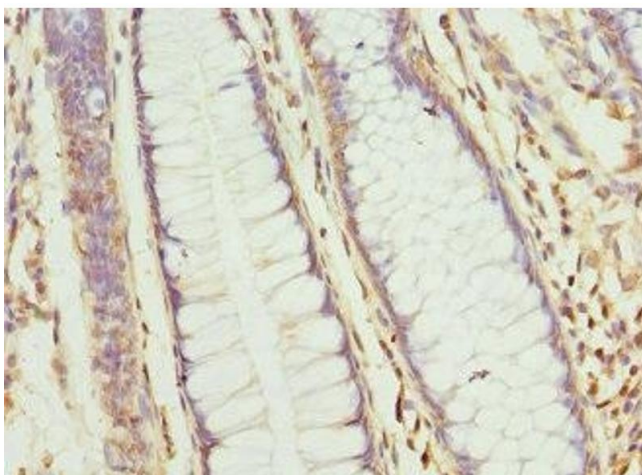
Preservative: Sodium azide

Precaution of Use: This product contains Sodium azide: a POISONOUS AND HAZARDOUS SUBSTANCE which should be handled by trained staff only.

Storage: -20 °C,-80 °C

Storage Comment: Upon receipt, store at -20°C or -80°C. Avoid repeated freeze.

Images



Immunohistochemistry

Image 1. Immunohistochemistry of paraffin-embedded human colon cancer using ABIN7154797 at dilution of 1:100