



Datasheet for ABIN7154826
anti-TSC1 antibody (AA 101-344)



[Go to Product page](#)

2 Images

Overview

Quantity:	100 µg
Target:	TSC1
Binding Specificity:	AA 101-344
Reactivity:	Human
Host:	Rabbit
Clonality:	Polyclonal
Conjugate:	This TSC1 antibody is un-conjugated
Application:	ELISA, Immunohistochemistry (IHC), Immunofluorescence (IF)

Product Details

Immunogen:	Recombinant Human Hamartin protein (101-344AA)
Isotype:	IgG
Cross-Reactivity:	Human
Purification:	>95%, Protein G purified

Target Details

Target:	TSC1
Alternative Name:	TSC1 (TSC1 Products)
Background:	Background: In complex with TSC2, inhibits the nutrient-mediated or growth factor-stimulated phosphorylation of S6K1 and EIF4EBP1 by negatively regulating mTORC1 signaling. Seems not

Target Details

to be required for TSC2 GAP activity towards RHEB. Implicated as a tumor suppressor. Involved in microtubule-mediated protein transport, but this seems to be due to unregulated mTOR signaling.

Aliases: Hamartin antibody, kiaa0243 antibody, LAM antibody, TSC antibody, Tsc1 antibody, Tsc1 gene antibody, TSC1_HUMAN antibody, Tuberous sclerosis 1 antibody, Tuberous sclerosis 1 protein antibody, tumor suppressor antibody

UniProt: [Q92574](#)

Pathways: [RTK Signaling](#), [AMPK Signaling](#), [Regulation of Cell Size](#), [Tube Formation](#)

Application Details

Application Notes: Recommended dilution: IHC:1:20-1:200, IF:1:50-1:200,

Restrictions: For Research Use only

Handling

Format: Liquid

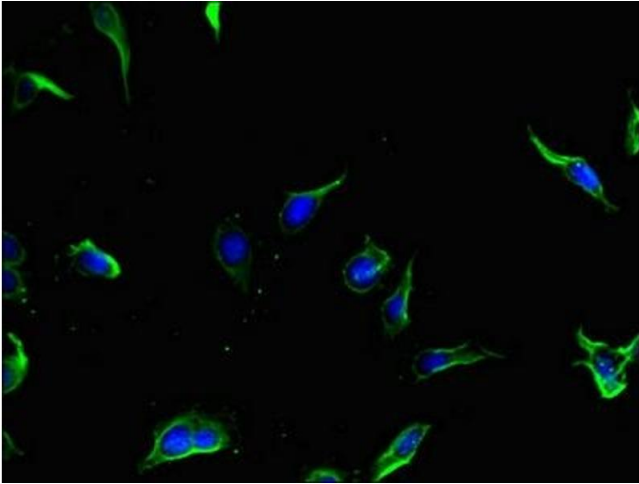
Buffer: Preservative: 0.03 % Proclin 300
Constituents: 50 % Glycerol, 0.01M PBS, PH 7.4

Preservative: ProClin

Precaution of Use: This product contains ProClin: a POISONOUS AND HAZARDOUS SUBSTANCE which should be handled by trained staff only.

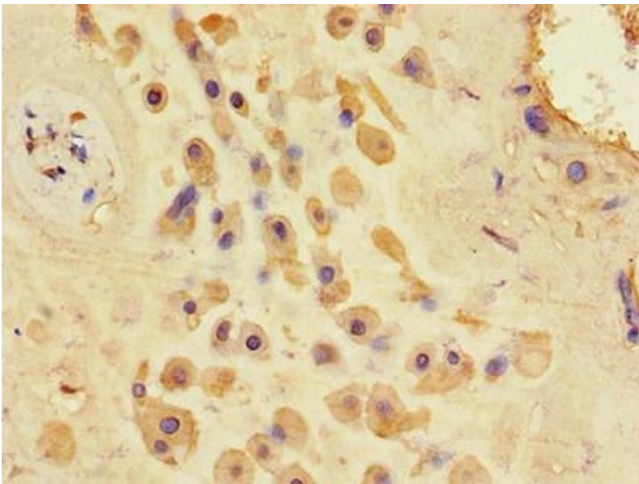
Storage: -20 °C,-80 °C

Storage Comment: Upon receipt, store at -20°C or -80°C. Avoid repeated freeze.



Immunofluorescence

Image 1. Immunofluorescent analysis of HeLa cells using ABIN7154826 at dilution of 1:100 and Alexa Fluor 488-conjugated AffiniPure Goat Anti-Rabbit IgG(H+L)



Immunohistochemistry

Image 2. Immunohistochemistry of paraffin-embedded human placenta tissue using ABIN7154826 at dilution of 1:100