

Datasheet for ABIN7154943
anti-HLTF antibody (AA 332-476)[Go to Product page](#)

3 Images

Overview

Quantity:	100 µg
Target:	HLTF
Binding Specificity:	AA 332-476
Reactivity:	Human
Host:	Rabbit
Clonality:	Polyclonal
Conjugate:	This HLTF antibody is un-conjugated
Application:	Western Blotting (WB), ELISA, Immunohistochemistry (IHC), Immunoprecipitation (IP)

Product Details

Immunogen:	Recombinant Human Helicase-like transcription factor protein (332-476AA)
Isotype:	IgG
Cross-Reactivity:	Human
Purification:	>95%, Protein G purified

Target Details

Target:	HLTF
Alternative Name:	HLTF (HLTF Products)
Background:	Background: Has both helicase and E3 ubiquitin ligase activities. Possesses intrinsic ATP-dependent nucleosome-remodeling activity, This activity may be required for transcriptional

Target Details

activation or repression of specific target promoters (By similarity). These may include the SERPINE1 and HIV-1 promoters and the SV40 enhancer, to which this protein can bind directly. Plays a role in error-free postreplication repair (PRR) of damaged DNA and maintains genomic stability through acting as a ubiquitin ligase for K48-linked polyubiquitination of chromatin-bound PCNA.

Aliases: DNA-binding protein/plasminogen activator inhibitor 1 regulator antibody, Helicase like transcription factor antibody, Helicase-like transcription factor antibody, HIP116 antibody, HIP116A antibody, HLTF 1 antibody, Hltf antibody, HLTF_HUMAN antibody, HLTF1 antibody, p113 antibody, RING finger protein 80 antibody, RNF80 antibody, SMARCA3 antibody, SMARCA3 antibody, SNF2-like 3 antibody, SNF2L3 antibody, Sucrose nonfermenting protein 2 like 3 antibody, Sucrose nonfermenting protein 2-like 3 antibody, SWI/SNF related matrix associated actin dependent regulator of chromatin subfamily A member 3 antibody, SWI/SNF-related matrix-associated actin-dependent regulator of chromatin a3 antibody, SWI/SNF-related matrix-associated actin-dependent regulator of chromatin subfamily A member 3 antibody, ZBU 1 antibody, ZBU1 antibody

UniProt: [Q14527](#)

Application Details

Application Notes: Recommended dilution: WB:1:500-1:5000, IHC:1:20-1:200, IP:1:200-1:2000,

Restrictions: For Research Use only

Handling

Format: Liquid

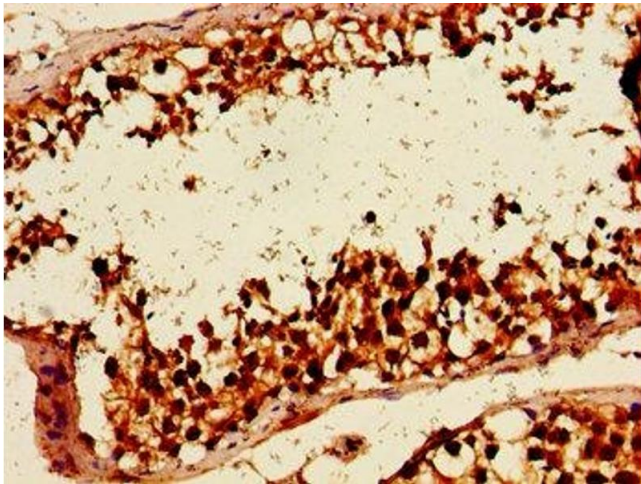
Buffer: Preservative: 0.03 % Proclin 300
Constituents: 50 % Glycerol, 0.01M PBS, pH 7.4

Preservative: ProClin

Precaution of Use: This product contains ProClin: a POISONOUS AND HAZARDOUS SUBSTANCE which should be handled by trained staff only.

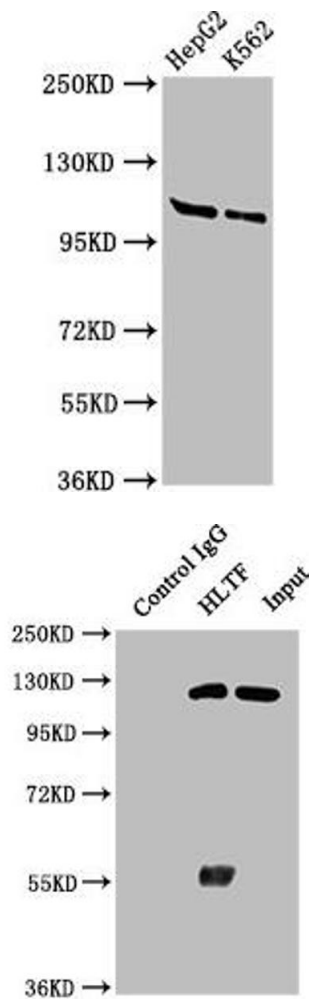
Storage: -20 °C, -80 °C

Storage Comment: Upon receipt, store at -20°C or -80°C. Avoid repeated freeze.



Immunohistochemistry

Image 1. Immunohistochemistry of paraffin-embedded human testis tissue using ABIN7154943 at dilution of 1:100



Western Blotting

Image 2. Western Blot Positive WB detected in: HepG2 whole cell lysate, K562 whole cell lysate All lanes: HLTF antibody at 3 µg/mL Secondary Goat polyclonal to rabbit IgG at 1/50000 dilution Predicted band size: 114, 100 kDa Observed band size: 114 kDa

Western Blotting

Image 3. Immunoprecipitating HLTF in Hela whole cell lysate Lane 1: Rabbit control IgG instead of ABIN7154943 in Hela whole cell lysate. For western blotting, a HRP-conjugated Protein G antibody was used as the secondary antibody (1/50000) Lane 2: ABIN7154943 (6 µg) + Hela whole cell lysate (1 mg) Lane 3: Hela whole cell lysate (20 µg)