

Datasheet for ABIN715496

**anti-alpha 2 Antiplasmin antibody (AA 161-260)****1** Image[Go to Product page](#)

## Overview

Quantity:	100 µL
Target:	alpha 2 Antiplasmin (SERPINF2)
Binding Specificity:	AA 161-260
Reactivity:	Human, Rat, Mouse
Host:	Rabbit
Clonality:	Polyclonal
Conjugate:	This alpha 2 Antiplasmin antibody is un-conjugated
Application:	Western Blotting (WB), ELISA, Immunofluorescence (Cultured Cells) (IF (cc)), Immunofluorescence (Paraffin-embedded Sections) (IF (p)), Immunohistochemistry (Paraffin- embedded Sections) (IHC (p)), Immunohistochemistry (Frozen Sections) (IHC (fro))

## Product Details

Immunogen:	KLH conjugated synthetic peptide derived from human SERPINF2/Alpha 2 antiplasmin
Isotype:	IgG
Cross-Reactivity:	Human, Mouse, Rat
Predicted Reactivity:	Dog,Horse,Rabbit
Purification:	Purified by Protein A.

## Target Details

Target:	alpha 2 Antiplasmin (SERPINF2)
---------	--------------------------------

## Target Details

Alternative Name:	alpha 2 Antiplasmin ( <a href="#">SERPINF2 Products</a> )
Background:	<p>Synonyms: A2AP, A2AP_HUMAN, AAP, Alpha 2 antiplasmin, Alpha 2 antiplasmin pigment epithelium derived factor, Alpha 2 AP, ALPHA 2 PI, Alpha 2 plasmin inhibitor, Alpha 2 plasmin inhibitor deficiency, Alpha-2-antiplasmin, Alpha-2-AP, Alpha-2-PI, Alpha-2-plasmin inhibitor, Antiplasmin deficiency, API, Plasmin inhibitor deficiency, PLI, Serine or cysteine peptidase inhibitor, clade F, member 2, Serine Or cysteine peptidase inhibitor, clade F, member 2, isoform CRA_c, Serine or cysteine proteinase inhibitor, clade F alpha 2 antiplasmin pigment epithelium derived factor member 2, Serine Or cysteine proteinase inhibitor, clade F, member 2, Serine or cysteine peptidase inhibitor clade F member 2, Serpin F2, Serpin peptidase inhibitor clade F, Serpin peptidase inhibitor, clade F alpha 2 antiplasmin pigment epithelium derived factor member 2, SERPINF2.</p> <p>Background: Alpha 2 Antiplasmin is a member of the serpin family of serine protease inhibitors. The protein is a major inhibitor of plasmin, which degrades fibrin and various other proteins. Consequently, the proper function of this gene has a major role in regulating the blood clotting pathway. Mutations in this gene result in alpha-2-plasmin inhibitor deficiency, which is characterized by severe hemorrhagic diathesis. Multiple transcript variants encoding different isoforms have been found for this gene.</p>
Gene ID:	5345
UniProt:	<a href="#">P08697</a>
Pathways:	<a href="#">Regulation of Systemic Arterial Blood Pressure by Hormones</a>

## Application Details

Application Notes:	WB 1:300-5000 ELISA 1:500-1000 IHC-P 1:200-400 IHC-F 1:100-500 IF(IHC-P) 1:50-200 IF(IHC-F) 1:50-200 IF(ICC) 1:50-200
Restrictions:	For Research Use only

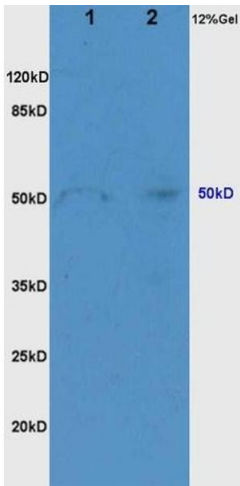
## Handling

Format:	Liquid
---------	--------

Handling

Concentration:	1 µg/µL
Buffer:	0.01M TBS( pH 7.4) with 1 % BSA, 0.02 % Proclin300 and 50 % Glycerol.
Preservative:	ProClin
Precaution of Use:	This product contains ProClin: a POISONOUS AND HAZARDOUS SUBSTANCE, which should be handled by trained staff only.
Storage:	4 °C,-20 °C
Storage Comment:	Shipped at 4°C. Store at -20°C for one year. Avoid repeated freeze/thaw cycles.
Expiry Date:	12 months

Images



SDS-PAGE

**Image 1.** L1 mouse brain, L2 mouse liver lysates probed (ABIN715496) at 1:200 in 4 °C. Followed by conjugation to secondary antibody at 1:3000 90min in 37 °C. Predicted and observed band size: 50kDa.