

Datasheet for ABIN7154972

anti-Hemoglobin Subunit beta antibody (AA 1-147)[Go to Product page](#)**3** Images

Overview

Quantity:	100 µg
Target:	Hemoglobin Subunit beta (HBB)
Binding Specificity:	AA 1-147
Reactivity:	Human
Host:	Rabbit
Clonality:	Polyclonal
Conjugate:	This Hemoglobin Subunit beta antibody is un-conjugated
Application:	Western Blotting (WB), Immunohistochemistry (IHC), ELISA

Product Details

Immunogen:	Recombinant Human Hemoglobin subunit beta protein (1-147AA)
Isotype:	IgG
Cross-Reactivity:	Human, Rat
Purification:	>95%, Protein G purified

Target Details

Target:	Hemoglobin Subunit beta (HBB)
Alternative Name:	HBB (HBB Products)
Target Type:	Viral Protein
Background:	Background: Involved in oxygen transport from the lung to the various peripheral tissues. LVV-

Target Details

hemorphin-7 potentiates the activity of bradykinin, causing a decrease in blood pressure.

Spinorphin: functions as an endogenous inhibitor of enkephalin-degrading enzymes such as DPP3, and as a selective antagonist of the P2RX3 receptor which is involved in pain signaling, these properties implicate it as a regulator of pain and inflammation.

Aliases: Beta-globin antibody, HBB antibody, HBB_HUMAN antibody, Hemoglobin alpha chain antibody, Hemoglobin beta chain antibody, heterotetrameric hemoglobin antibody, Spinorphin antibody, subunit alpha antibody

UniProt: [P68871](#)

Application Details

Application Notes: Recommended dilution: WB:1:500-1:5000, IHC:1:200-1:500,

Restrictions: For Research Use only

Handling

Format: Liquid

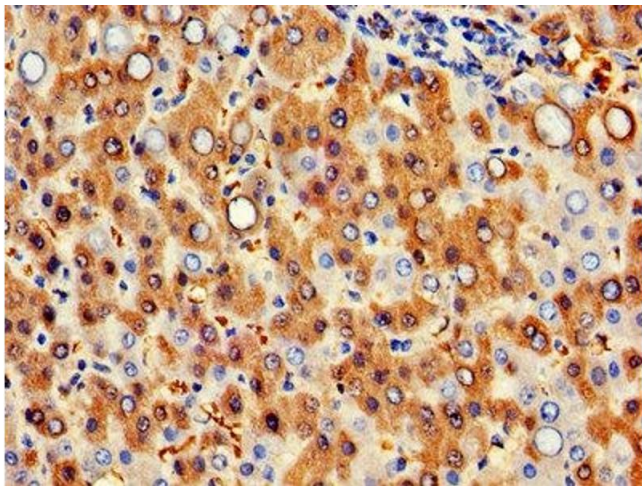
Buffer: Preservative: 0.03 % Proclin 300
Constituents: 50 % Glycerol, 0.01M PBS, PH 7.4

Preservative: ProClin

Precaution of Use: This product contains ProClin: a POISONOUS AND HAZARDOUS SUBSTANCE which should be handled by trained staff only.

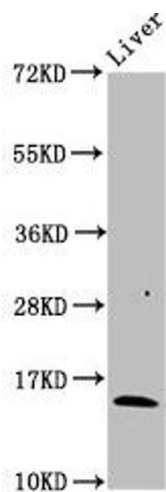
Storage: -20 °C,-80 °C

Storage Comment: Upon receipt, store at -20°C or -80°C. Avoid repeated freeze.



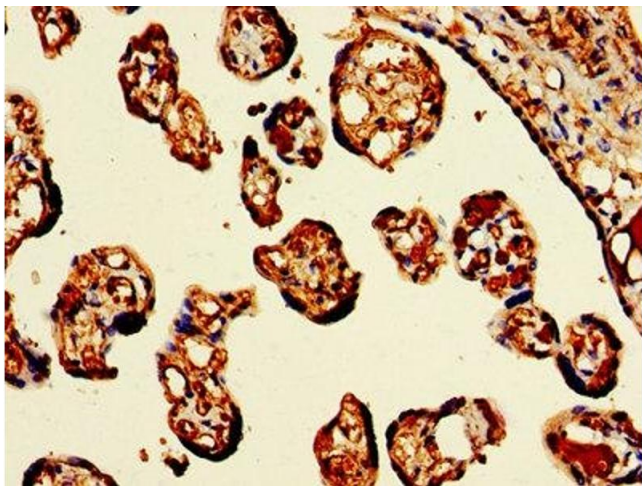
Immunohistochemistry

Image 1. IHC image of ABIN7154972 diluted at 1:300 and staining in paraffin-embedded human liver cancer performed on a Leica Bond™ system. After dewaxing and hydration, antigen retrieval was mediated by high pressure in a citrate buffer (pH 6.0). Section was blocked with 10% normal goat serum 30min at RT. Then primary antibody (1% BSA) was incubated at 4°C overnight. The primary is detected by a biotinylated secondary antibody and visualized using an HRP conjugated SP system.



Western Blotting

Image 2. Western Blot Positive WB detected in: Rat liver tissue All lanes: HBB antibody at 3 µg/mL Secondary Goat polyclonal to rabbit IgG at 1/50000 dilution Predicted band size: 16 kDa Observed band size: 16 kDa



Immunohistochemistry

Image 3. IHC image of ABIN7154972 diluted at 1:300 and staining in paraffin-embedded human placenta tissue performed on a Leica Bond™ system. After dewaxing and hydration, antigen retrieval was mediated by high pressure in a citrate buffer (pH 6.0). Section was blocked with 10% normal goat serum 30min at RT. Then primary antibody (1% BSA) was incubated at 4°C overnight. The primary is detected by a biotinylated secondary antibody and visualized using an HRP conjugated SP system.