

Datasheet for ABIN7155039

anti-HEPACAM antibody (AA 265-415)[Go to Product page](#)**2** Images

Overview

Quantity:	100 µg
Target:	HEPACAM
Binding Specificity:	AA 265-415
Reactivity:	Human
Host:	Rabbit
Clonality:	Polyclonal
Conjugate:	This HEPACAM antibody is un-conjugated
Application:	Western Blotting (WB), ELISA, Immunofluorescence (IF)

Product Details

Immunogen:	Recombinant Human Hepatocyte cell adhesion molecule protein (265-415AA)
Isotype:	IgG
Cross-Reactivity:	Human
Purification:	>95%, Protein G purified

Target Details

Target:	HEPACAM
Alternative Name:	HEPACAM (HEPACAM Products)
Background:	Background: Involved in regulating cell motility and cell-matrix interactions. May inhibit cell growth through suppression of cell proliferation.

Target Details

Aliases: FLJ25530 antibody, GlialCAM antibody, HECAM_HUMAN antibody, HEPACAM antibody, Hepatocyte cell adhesion molecule antibody, Protein hepaCAM antibody

UniProt: [Q14CZ8](#)

Application Details

Application Notes: Recommended dilution: WB:1:500-1:5000, IF:1:200-1:500,

Restrictions: For Research Use only

Handling

Format: Liquid

Buffer: Preservative: 0.03 % Proclin 300
Constituents: 50 % Glycerol, 0.01M PBS, pH 7.4

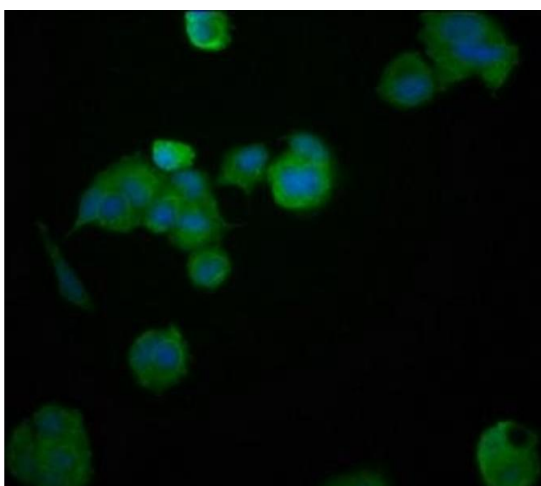
Preservative: ProClin

Precaution of Use: This product contains ProClin: a POISONOUS AND HAZARDOUS SUBSTANCE which should be handled by trained staff only.

Storage: -20 °C,-80 °C

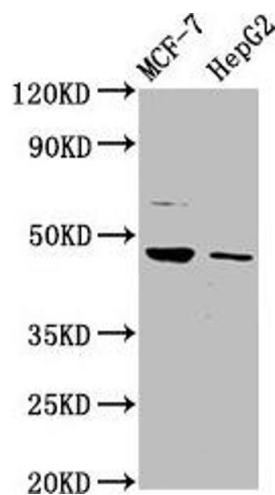
Storage Comment: Upon receipt, store at -20°C or -80°C. Avoid repeated freeze.

Images



Immunofluorescence

Image 1. Immunofluorescence staining of MCF-7 cells with ABIN7155039 at 1:200, counter-stained with DAPI. The cells were fixed in 4% formaldehyde, permeabilized using 0.2% Triton X-100 and blocked in 10% normal Goat Serum. The cells were then incubated with the antibody overnight at 4°C. The secondary antibody was Alexa Fluor 488-conjugated AffiniPure Goat Anti-Rabbit IgG(H+L).



Western Blotting

Image 2. Western Blot Positive WB detected in: MCF-7 whole cell lysate, HepG2 whole cell lysate All lanes: HEPACAM antibody at 3.2 µg/mL Secondary Goat polyclonal to rabbit IgG at 1/50000 dilution Predicted band size: 47, 41 kDa Observed band size: 47 kDa