



[Go to Product page](#)

Datasheet for ABIN7155172
anti-SLC7A1 antibody (AA 430-492)

3 Images

Overview

Quantity:	100 µg
Target:	SLC7A1
Binding Specificity:	AA 430-492
Reactivity:	Human
Host:	Rabbit
Clonality:	Polyclonal
Conjugate:	This SLC7A1 antibody is un-conjugated
Application:	ELISA, Immunohistochemistry (IHC), Immunofluorescence (IF)

Product Details

Immunogen:	Recombinant Human High affinity cationic amino acid transporter 1 protein (430-492AA)
Isotype:	IgG
Cross-Reactivity:	Human
Purification:	>95%, Protein G purified

Target Details

Target:	SLC7A1
Alternative Name:	SLC7A1 (SLC7A1 Products)
Background:	Background: High-affinity, low capacity permease involved in the transport of the cationic amino acids (arginine, lysine and ornithine) in non-hepatic tissues.

Target Details

Aliases: Amino acid transporter cationic 1 antibody, ATRC1 antibody, CAT-1 antibody, CaT1 antibody, CTR1_HUMAN antibody, Ecotropic retroviral leukemia receptor homolog antibody, Ecotropic retroviral receptor antibody, Ecotropic retrovirus receptor homolog antibody, ERR antibody, HCAT1 antibody, High affinity cationic amino acid transporter 1 antibody, High-affinity cationic amino acid transporter-1 antibody, REC1L antibody, Slc7a1 antibody, Solute carrier family 7 (cationic amino acid transporter, y+ system) member 1 antibody, Solute carrier family 7 member 1 antibody, System Y+ basic amino acid transporter antibody

UniProt: [P30825](#)

Pathways: [Dicarboxylic Acid Transport](#)

Application Details

Application Notes: Recommended dilution: IHC:1:500-1:1000, IF:1:50-1:200,

Restrictions: For Research Use only

Handling

Format: Liquid

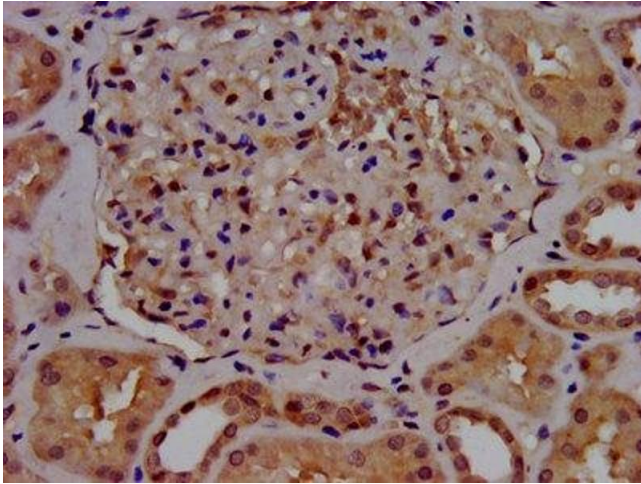
Buffer: Preservative: 0.03 % Proclin 300
Constituents: 50 % Glycerol, 0.01M PBS, pH 7.4

Preservative: ProClin

Precaution of Use: This product contains ProClin: a POISONOUS AND HAZARDOUS SUBSTANCE which should be handled by trained staff only.

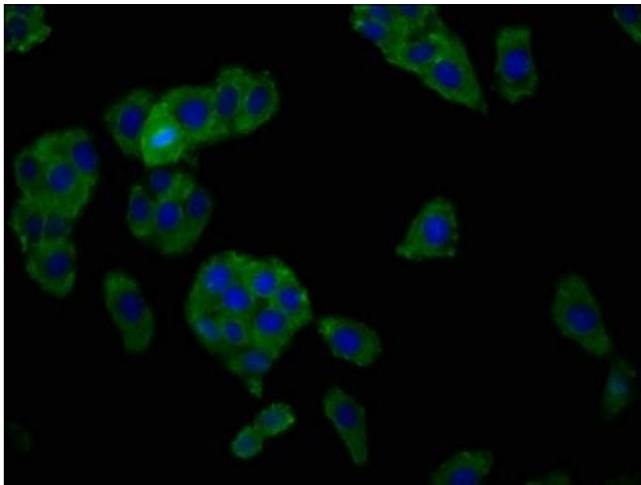
Storage: -20 °C,-80 °C

Storage Comment: Upon receipt, store at -20°C or -80°C. Avoid repeated freeze.



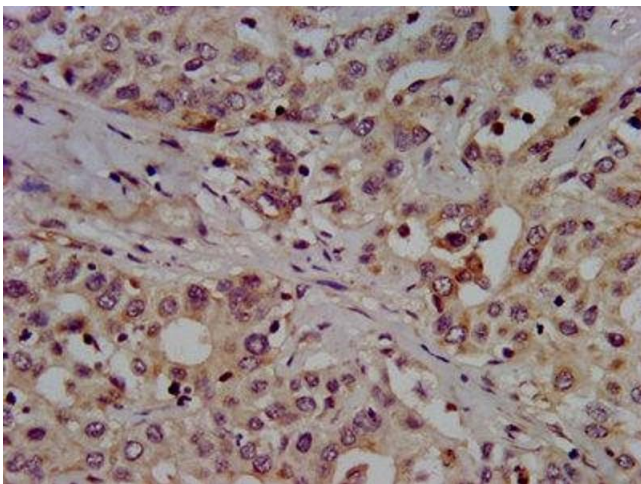
Immunohistochemistry

Image 1. IHC image of ABIN7155172 diluted at 1:500 and staining in paraffin-embedded human kidney tissue performed on a Leica Bond™ system. After dewaxing and hydration, antigen retrieval was mediated by high pressure in a citrate buffer (pH 6.0). Section was blocked with 10% normal goat serum 30min at RT. Then primary antibody (1% BSA) was incubated at 4°C overnight. The primary is detected by a biotinylated secondary antibody and visualized using an HRP conjugated SP system.



Immunofluorescence

Image 2. Immunofluorescence staining of HepG2 cells with ABIN7155172 at 1:166, counter-stained with DAPI. The cells were fixed in 4% formaldehyde, permeabilized using 0.2% Triton X-100 and blocked in 10% normal Goat Serum. The cells were then incubated with the antibody overnight at 4°C. The secondary antibody was Alexa Fluor 488-conjugated AffiniPure Goat Anti-Rabbit IgG(H+L).



Immunohistochemistry

Image 3. IHC image of ABIN7155172 diluted at 1:500 and staining in paraffin-embedded human liver cancer performed on a Leica Bond™ system. After dewaxing and hydration, antigen retrieval was mediated by high pressure in a citrate buffer (pH 6.0). Section was blocked with 10% normal goat serum 30min at RT. Then primary antibody (1% BSA) was incubated at 4°C overnight. The primary is detected by a biotinylated secondary antibody and visualized using an HRP conjugated SP system.