



[Go to Product page](#)

Datasheet for ABIN7155188  
**anti-FCER1G antibody (AA 19-86)**

2 Images

Overview

Quantity:	100 µg
Target:	FCER1G
Binding Specificity:	AA 19-86
Reactivity:	Human
Host:	Rabbit
Clonality:	Polyclonal
Conjugate:	This FCER1G antibody is un-conjugated
Application:	ELISA, Immunohistochemistry (IHC), Immunofluorescence (IF)

Product Details

Immunogen:	Recombinant Human High affinity immunoglobulin epsilon receptor subunit gamma protein (19-86AA)
Isotype:	IgG
Cross-Reactivity:	Human
Purification:	>95%, Protein G purified

Target Details

Target:	FCER1G
Alternative Name:	FCER1G ( <a href="#">FCER1G Products</a> )
Background:	Background: Associates with a variety of FcR alpha chains to form a functional signaling

## Target Details

---

complex. Regulates several aspects of the immune response. The gamma subunit has a critical role in allowing the IgE Fc receptor to reach the cell surface. Also involved in collagen-mediated platelet activation and in neutrophil activation mediated by integrin.

Aliases: Fc fragment of IgE, high affinity I, receptor for, gamma polypeptide antibody, Fc receptor gamma chain antibody, Fc-epsilon RI-gamma antibody, FCER1G antibody, FCERG\_HUMAN antibody, FceRI gamma antibody, FCRG antibody, FcRgamma antibody, High affinity immunoglobulin epsilon receptor subunit gamma antibody, IgE Fc receptor subunit gamma antibody, Immunoglobulin E receptor, high affinity, gamma chain antibody

---

UniProt: [P30273](#)

---

Pathways: [Fc-epsilon Receptor Signaling Pathway](#), [Regulation of Leukocyte Mediated Immunity](#), [Positive Regulation of Immune Effector Process](#), [Production of Molecular Mediator of Immune Response](#)

## Application Details

---

Application Notes: Recommended dilution: IHC:1:20-1:200, IF:1:50-1:200,

---

Restrictions: For Research Use only

## Handling

---

Format: Liquid

---

Buffer: Preservative: 0.03 % Proclin 300  
Constituents: 50 % Glycerol, 0.01M PBS, PH 7.4

---

Preservative: ProClin

---

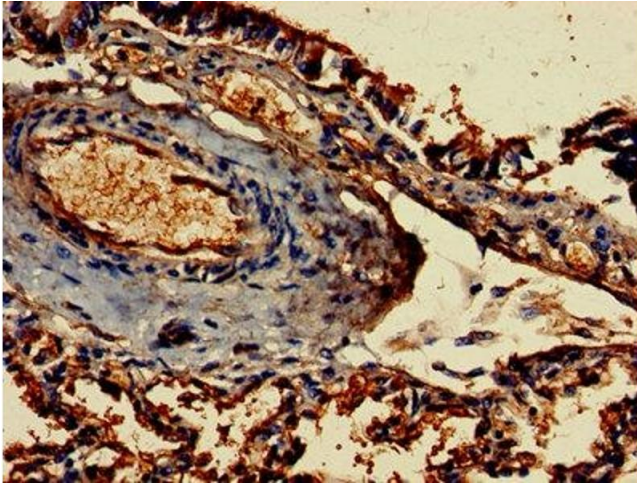
Precaution of Use: This product contains ProClin: a POISONOUS AND HAZARDOUS SUBSTANCE which should be handled by trained staff only.

---

Storage: -20 °C,-80 °C

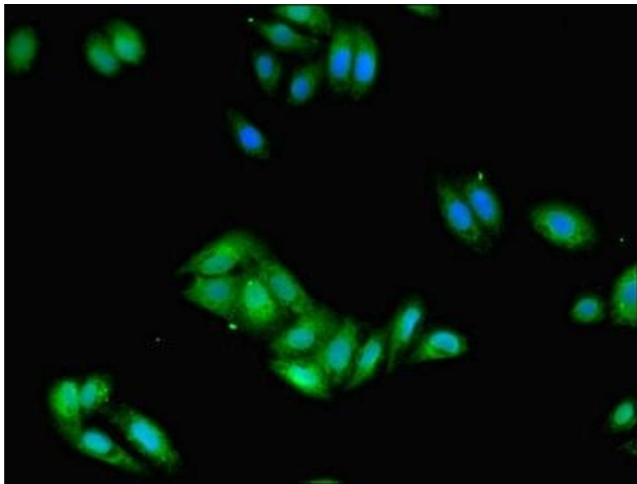
---

Storage Comment: Upon receipt, store at -20°C or -80°C. Avoid repeated freeze.



### Immunohistochemistry

**Image 1.** Immunohistochemistry of paraffin-embedded human lung tissue using ABIN7155188 at dilution of 1:100



### Immunofluorescence

**Image 2.** Immunofluorescent analysis of HepG2 cells using ABIN7155188 at dilution of 1:100 and Alexa Fluor 488-conjugated AffiniPure Goat Anti-Rabbit IgG(H+L)