

Datasheet for ABIN7155270
anti-KAT2B antibody (AA 767-832)[Go to Product page](#)

1 Image

Overview

Quantity:	100 µg
Target:	KAT2B
Binding Specificity:	AA 767-832
Reactivity:	Human
Host:	Rabbit
Clonality:	Polyclonal
Conjugate:	This KAT2B antibody is un-conjugated
Application:	ELISA, Immunohistochemistry (IHC)

Product Details

Immunogen:	Recombinant Human Histone acetyltransferase KAT2B protein (767-832AA)
Isotype:	IgG
Cross-Reactivity:	Human
Purification:	>95%, Protein G purified

Target Details

Target:	KAT2B
Alternative Name:	KAT2B (KAT2B Products)
Background:	Background: Functions as a histone acetyltransferase (HAT) to promote transcriptional activation. Has significant histone acetyltransferase activity with core histones (H3 and H4),

Target Details

and also with nucleosome core particles. Also acetylates non-histone proteins, such as ACLY. Inhibits cell-cycle progression and counteracts the mitogenic activity of the adenoviral oncoprotein E1A. In case of HIV-1 infection, it is recruited by the viral protein Tat. Regulates Tat's transactivating activity and may help inducing chromatin remodeling of proviral genes. Acts as a circadian transcriptional coactivator which enhances the activity of the circadian transcriptional activators: NPAS2-ARNTL/BMAL1 and CLOCK-ARNTL/BMAL1 heterodimers. Aliases: CAF antibody, CREBBP associated factor antibody, GCN5 antibody, GCN5L antibody, GCN5L1 antibody, Histone acetylase PCAF antibody, Histone acetyltransferase KAT2B antibody, Histone acetyltransferase PCAF antibody, K(lysine) acetyltransferase 2B antibody, KAT2B antibody, KAT2B_HUMAN antibody, Lysine acetyltransferase 2B antibody, P antibody, P/CAF antibody, p300/CBP associated factor antibody, P300/CBP-associated factor antibody, Pcaf antibody

UniProt: [Q92831](#)

Pathways: [p53 Signaling](#), [Regulation of Carbohydrate Metabolic Process](#)

Application Details

Application Notes: Recommended dilution: IHC:1:20-1:200,

Restrictions: For Research Use only

Handling

Format: Liquid

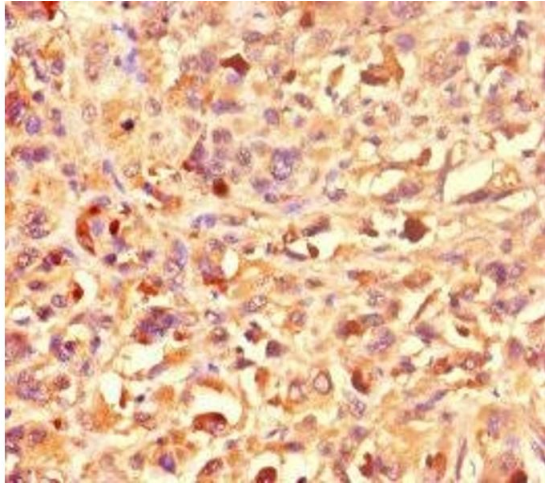
Buffer: Preservative: 0.03 % Proclin 300
Constituents: 50 % Glycerol, 0.01M PBS, PH 7.4

Preservative: ProClin

Precaution of Use: This product contains ProClin: a POISONOUS AND HAZARDOUS SUBSTANCE which should be handled by trained staff only.

Storage: -20 °C,-80 °C

Storage Comment: Upon receipt, store at -20°C or -80°C. Avoid repeated freeze.



Immunohistochemistry

Image 1. Immunohistochemistry of paraffin-embedded human melanoma using ABIN7155270 at dilution of 1:100