

Datasheet for ABIN7155361  
**anti-HIST1H2AB antibody (AA 2-121)**[Go to Product page](#)

## 1 Image

## Overview

Quantity:	100 µg
Target:	HIST1H2AB
Binding Specificity:	AA 2-121
Reactivity:	Human
Host:	Rabbit
Clonality:	Polyclonal
Conjugate:	This HIST1H2AB antibody is un-conjugated
Application:	ELISA, Immunohistochemistry (IHC)

## Product Details

Immunogen:	Recombinant Human Histone H2A type 1-B/E protein (2-121AA)
Isotype:	IgG
Cross-Reactivity:	Human
Purification:	>95%, Protein G purified

## Target Details

Target:	HIST1H2AB
Alternative Name:	HIST1H2AB ( <a href="#">HIST1H2AB Products</a> )
Background:	Background: Core component of nucleosome. Nucleosomes wrap and compact DNA into chromatin, limiting DNA accessibility to the cellular machineries which require DNA as a

## Target Details

template. Histones thereby play a central role in transcription regulation, DNA repair, DNA replication and chromosomal stability. DNA accessibility is regulated via a complex set of post-translational modifications of histones, also called histone code, and nucleosome remodeling.

Aliases: H2a 615 antibody, H2A antibody, H2A GL101 antibody, H2A histone family member A antibody, H2A.1 antibody, H2A.2 antibody, H2A/a antibody, H2A/m antibody, H2A/O antibody, H2A/q antibody, H2A1B\_HUMAN antibody, H2AFA antibody, H2AFE antibody, H2AFL antibody, H2AFM antibody, H2AFO antibody, H2AFQ antibody, HIST1H2AE antibody, HIST1H2AJ antibody, HIST2H2AA antibody, HIST2H2AA3 antibody, HIST2H2AB antibody, HIST2H2AC antibody, Histone 1 H2ae antibody, Histone 2 H2aa3 antibody, Histone 2 H2ab antibody, Histone 2 H2ac antibody, Histone H2A type 1 B antibody, Histone H2A type 1 C antibody, Histone H2A type 1 E antibody, Histone H2A type 1 J antibody, Histone H2A type 1-B/E antibody, Histone H2A.2 antibody, Histone H2A/a antibody, Histone H2A/m antibody, MGC74460 antibody

UniProt: [P04908](#)

Pathways: [Telomere Maintenance](#)

## Application Details

Application Notes: Recommended dilution: IHC:1:1000-1:2000,

Restrictions: For Research Use only

## Handling

Format: Liquid

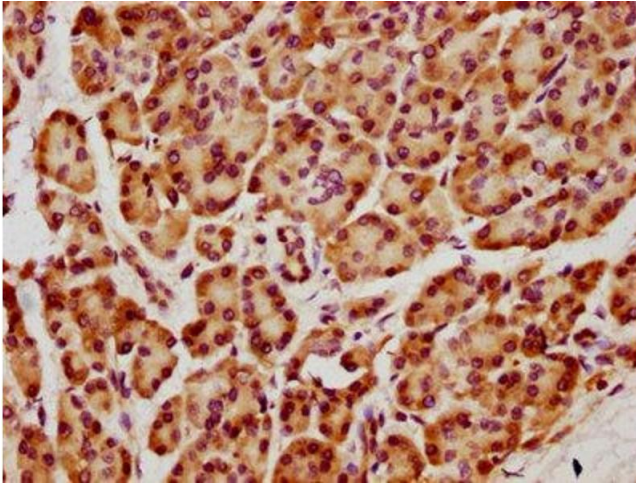
Buffer: Preservative: 0.03 % Proclin 300  
Constituents: 50 % Glycerol, 0.01M PBS, PH 7.4

Preservative: ProClin

Precaution of Use: This product contains ProClin: a POISONOUS AND HAZARDOUS SUBSTANCE which should be handled by trained staff only.

Storage: -20 °C,-80 °C

Storage Comment: Upon receipt, store at -20°C or -80°C. Avoid repeated freeze.



#### Immunohistochemistry

**Image 1.** IHC image of ABIN7155361 diluted at 1:1300 and staining in paraffin-embedded human pancreatic tissue performed on a Leica Bond™ system. After dewaxing and hydration, antigen retrieval was mediated by high pressure in a citrate buffer (pH 6.0). Section was blocked with 10% normal goat serum 30min at RT. Then primary antibody (1% BSA) was incubated at 4°C overnight. The primary is detected by a biotinylated secondary antibody and visualized using an HRP conjugated SP system.