

Datasheet for ABIN7155391
anti-HIST1H2BB antibody (AA 2-126)



[Go to Product page](#)

4 Images

Overview

Quantity:	100 µg
Target:	HIST1H2BB
Binding Specificity:	AA 2-126
Reactivity:	Human
Host:	Rabbit
Clonality:	Polyclonal
Conjugate:	This HIST1H2BB antibody is un-conjugated
Application:	ELISA, Western Blotting (WB), Immunofluorescence (IF), Immunohistochemistry (IHC)

Product Details

Immunogen:	Recombinant Human Histone H2B type 1-B protein (2-126AA)
Isotype:	IgG
Cross-Reactivity:	Human, Mouse, Rat
Purification:	>95%, Protein G purified

Target Details

Target:	HIST1H2BB
Alternative Name:	HIST1H2BB (HIST1H2BB Products)
Background:	Background: Core component of nucleosome. Nucleosomes wrap and compact DNA into chromatin, limiting DNA accessibility to the cellular machineries which require DNA as a

Target Details

template. Histones thereby play a central role in transcription regulation, DNA repair, DNA replication and chromosomal stability. DNA accessibility is regulated via a complex set of post-translational modifications of histones, also called histone code, and nucleosome remodeling. Aliases: HIST1H2BB antibody, H2BFFHistone H2B type 1-B antibody, Histone H2B.1 antibody, Histone H2B.f antibody, H2B/f antibody

UniProt: [P33778](#)

Pathways: [Telomere Maintenance](#)

Application Details

Application Notes: Recommended dilution: WB:1:500-1:5000, IHC:1:500-1:1000, IF:1:50-1:500,

Restrictions: For Research Use only

Handling

Format: Liquid

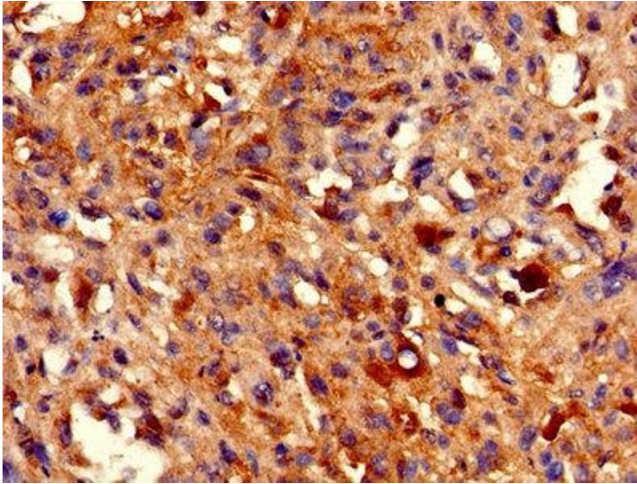
Buffer: Preservative: 0.03 % Proclin 300
Constituents: 50 % Glycerol, 0.01M PBS, PH 7.4

Preservative: ProClin

Precaution of Use: This product contains ProClin: a POISONOUS AND HAZARDOUS SUBSTANCE which should be handled by trained staff only.

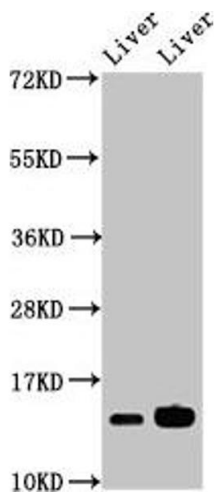
Storage: -20 °C,-80 °C

Storage Comment: Upon receipt, store at -20°C or -80°C. Avoid repeated freeze.



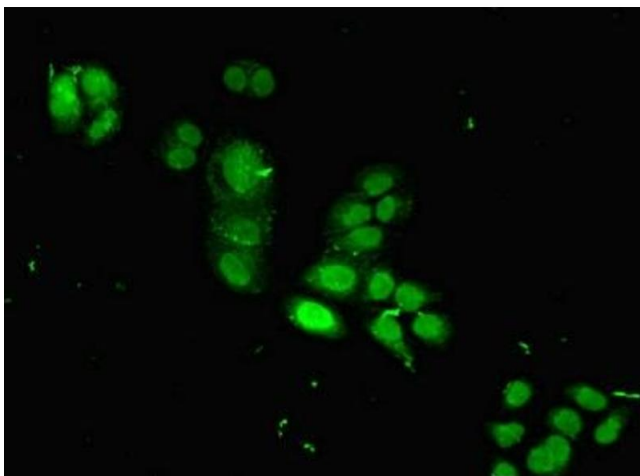
Immunohistochemistry

Image 1. IHC image of ABIN7155391 diluted at 1:800 and staining in paraffin-embedded human melanoma performed on a Leica Bond™ system. After dewaxing and hydration, antigen retrieval was mediated by high pressure in a citrate buffer (pH 6.0). Section was blocked with 10% normal goat serum 30min at RT. Then primary antibody (1% BSA) was incubated at 4°C overnight. The primary is detected by a biotinylated secondary antibody and visualized using an HRP conjugated SP system.



Western Blotting

Image 2. Western Blot Positive WB detected in: Mouse liver tissue, Rat liver tissue All lanes: HIST1H2BB antibody at 2.8 µg/mL Secondary Goat polyclonal to rabbit IgG at 1/50000 dilution Predicted band size: 14 kDa Observed band size: 14 kDa



Immunofluorescence

Image 3. Immunofluorescent analysis of PC-3 cells using ABIN7155391 at dilution of 1:266 and Alexa Fluor 488-conjugated AffiniPure Goat Anti-Rabbit IgG(H+L)

Please check the [product details page](#) for more images. Overall 4 images are available for ABIN7155391.