



[Go to Product page](#)

Datasheet for ABIN7155419  
**anti-CENPA antibody (AA 1-50)**

1 Image

Overview

Quantity:	100 µg
Target:	CENPA
Binding Specificity:	AA 1-50
Reactivity:	Human
Host:	Rabbit
Clonality:	Polyclonal
Conjugate:	This CENPA antibody is un-conjugated
Application:	ELISA, Immunofluorescence (IF)

Product Details

Immunogen:	Recombinant Human Histone H3-like centromeric protein A protein (1-50AA)
Isotype:	IgG
Cross-Reactivity:	Human
Purification:	>95%, Protein G purified

Target Details

Target:	CENPA
Alternative Name:	CENPA ( <a href="#">CENPA Products</a> )
Background:	Background: Histone H3-like variant which exclusively replaces conventional H3 in the nucleosome core of centromeric chromatin at the inner plate of the kinetochore. Required for

## Target Details

---

recruitment and assembly of kinetochore proteins, mitotic progression and chromosome segregation. May serve as an epigenetic mark that propagates centromere identity through replication and cell division. The CENPA-H4 heterotetramer can bind DNA by itself (in vitro).  
Aliases: CENP A antibody, CENP-A antibody, cenpa antibody, CENPA\_HUMAN antibody, Centromere autoantigen A antibody, Centromere protein A 17 kDa antibody, Centromere protein A antibody, Histone H3 like centromeric protein A antibody, Histone H3-like centromeric protein A antibody

---

UniProt: [P49450](#)

---

Pathways: [Chromatin Binding](#), [Maintenance of Protein Location](#)

## Application Details

---

Application Notes: Recommended dilution: IF:1:50-1:200,

---

Restrictions: For Research Use only

## Handling

---

Format: Liquid

---

Buffer: Preservative: 0.03 % Proclin 300  
Constituents: 50 % Glycerol, 0.01M PBS, PH 7.4

---

Preservative: ProClin

---

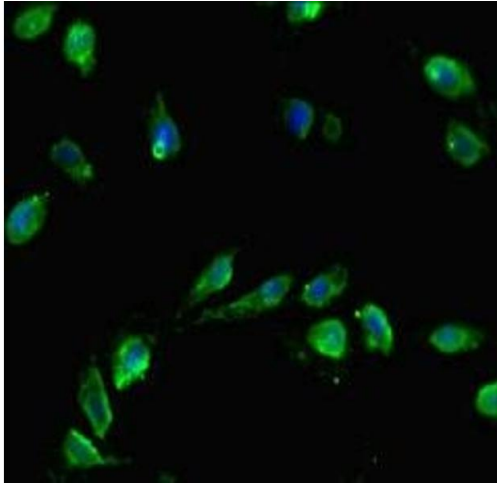
Precaution of Use: This product contains ProClin: a POISONOUS AND HAZARDOUS SUBSTANCE which should be handled by trained staff only.

---

Storage: -20 °C,-80 °C

---

Storage Comment: Upon receipt, store at -20°C or -80°C. Avoid repeated freeze.



#### Immunofluorescence

**Image 1.** Immunofluorescent analysis of HeLa cells using ABIN7155419 at dilution of 1:100 and Alexa Fluor 488-conjugated AffiniPure Goat Anti-Rabbit IgG(H+L)