

Datasheet for ABIN7155462

**anti-Lysine (K)-Specific Methyltransferase 2B (KMT2B) (AA 145-290) antibody**[Go to Product page](#)**1** Image

## Overview

Quantity:	100 µL
Target:	Lysine (K)-Specific Methyltransferase 2B (KMT2B)
Binding Specificity:	AA 145-290
Reactivity:	Human
Host:	Rabbit
Clonality:	Polyclonal
Conjugate:	Un-conjugated
Application:	ELISA, Immunofluorescence (IF)

## Product Details

Immunogen:	Recombinant Human Histone-lysine N-methyltransferase 2B protein (145-290AA)
Isotype:	IgG
Cross-Reactivity:	Human
Purification:	>95%, Protein G purified

## Target Details

Target:	Lysine (K)-Specific Methyltransferase 2B (KMT2B)
Alternative Name:	KMT2B ( <a href="#">KMT2B Products</a> )
Background:	Background: Histone methyltransferase. Methylates 'Lys-4' of histone H3. H3 'Lys-4' methylation represents a specific tag for epigenetic transcriptional activation. Plays a central

## Target Details

role in beta-globin locus transcription regulation by being recruited by NFE2. Plays an important role in controlling bulk H3K4me during oocyte growth and preimplantation development.

Required during the transcriptionally active period of oocyte growth for the establishment and/or maintenance of bulk H3K4 trimethylation (H3K4me3), global transcriptional silencing that preceeds resumption of meiosis, oocyte survival and normal zygotic genome activation.

Aliases: Histone-lysine N-methyltransferase 2B antibody, HRX2 antibody, KIAA0304 gene product antibody, KMT2B antibody, KMT2B\_HUMAN antibody, Likely ortholog of mouse WW domain binding protein 7 antibody, Lysine N-methyltransferase 2B antibody, mixed lineage leukemia 4 antibody, Mixed lineage leukemia gene homolog 2 protein antibody, MLL2 antibody, myeloid lymphoid leukemia 4 antibody, Myeloid lymphoid or mixed lineage leukemia protein 4 antibody, Myeloid/lymphoid or mixed-lineage leukemia protein 4 antibody, Trithorax homolog 2 antibody, trithorax homologue 2 antibody, TRX2 antibody, WBP-7 antibody, WBP7 antibody, WW domain-binding protein 7 antibody

UniProt: [Q9UMN6](#)

Pathways: [Warburg Effect](#)

## Application Details

Application Notes: Recommended dilution: IF:1:50-1:200,

Restrictions: For Research Use only

## Handling

Format: Liquid

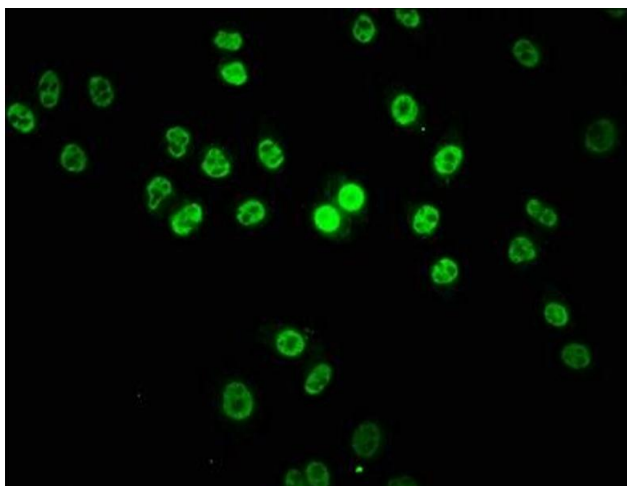
Buffer: Preservative: 0.03 % Proclin 300  
Constituents: 50 % Glycerol, 0.01M PBS, pH 7.4

Preservative: ProClin

Precaution of Use: This product contains ProClin: a POISONOUS AND HAZARDOUS SUBSTANCE which should be handled by trained staff only.

Storage: -20 °C,-80 °C

Storage Comment: Upon receipt, store at -20°C or -80°C. Avoid repeated freeze.



#### Immunofluorescence

**Image 1.** Immunofluorescence staining of HeLa cells with ABIN7155462 at 1:133, counter-stained with DAPI. The cells were fixed in 4 % formaldehyde, permeabilized using 0.2 % Triton X-100 and blocked in 10 % normal Goat Serum. The cells were then incubated with the antibody overnight at 4 °C. The secondary antibody was Alexa Fluor 488-conjugated AffiniPure Goat Anti-Rabbit IgG(H+L).