

Datasheet for ABIN7155466  
**anti-MLL5/KMT2E antibody (AA 182-316)**[Go to Product page](#)

## 1 Image

## Overview

Quantity:	100 µL
Target:	MLL5/KMT2E (MLL5)
Binding Specificity:	AA 182-316
Reactivity:	Human
Host:	Rabbit
Clonality:	Polyclonal
Conjugate:	This MLL5/KMT2E antibody is un-conjugated
Application:	Western Blotting (WB), ELISA

## Product Details

Immunogen:	Recombinant Human Histone-lysine N-methyltransferase 2E protein (182-316AA)
Isotype:	IgG
Cross-Reactivity:	Human, Mouse
Purification:	>95%, Protein G purified

## Target Details

Target:	MLL5/KMT2E (MLL5)
Alternative Name:	KMT2E ( <a href="#">MLL5 Products</a> )
Background:	Background: Histone methyltransferase that specifically mono- and dimethylates 'Lys-4' of histone H3 (H3K4me1 and H3K4me2). H3 'Lys-4' methylation represents a specific tag for

## Target Details

epigenetic transcriptional activation. Key regulator of hematopoiesis involved in terminal myeloid differentiation and in the regulation of hematopoietic stem cell (HSCs) self-renewal by a mechanism that involves DNA methylation. Plays an essential role in retinoic-acid-induced granulopoiesis by acting as a coactivator of RAR-alpha (RARA) in target gene promoters. Also acts as an important cell cycle regulator, participating in cell cycle regulatory network machinery at multiple cell cycle stages. Required to suppress inappropriate expression of S-phase-promoting genes and maintain expression of determination genes in quiescent cells. Overexpression inhibits cell cycle progression, while knockdown induces cell cycle arrest at both the G1 and G2/M phases.

Aliases: HDCMC04P antibody, Histone lysine N methyltransferase MLL5 antibody, Histone-lysine N-methyltransferase MLL5 antibody, KMT2E antibody, Lysine N methyltransferase 2E antibody, Lysine N-methyltransferase 2E antibody, MGC70452 antibody, Mll5 antibody, MLL5\_HUMAN antibody, Myeloid/lymphoid or mixed lineage leukemia 5 (trithorax homolog, Drosophila) antibody, Myeloid/lymphoid or mixed lineage leukemia 5 antibody, Myeloid/lymphoid or mixed lineage leukemia protein 5 antibody, Myeloid/lymphoid or mixed-lineage leukemia protein 5 antibody

UniProt: [Q8IZD2](#)

Pathways: [Retinoic Acid Receptor Signaling Pathway](#), [Warburg Effect](#)

## Application Details

Application Notes: Recommended dilution: WB:1:500-1:5000,

Restrictions: For Research Use only

## Handling

Format: Liquid

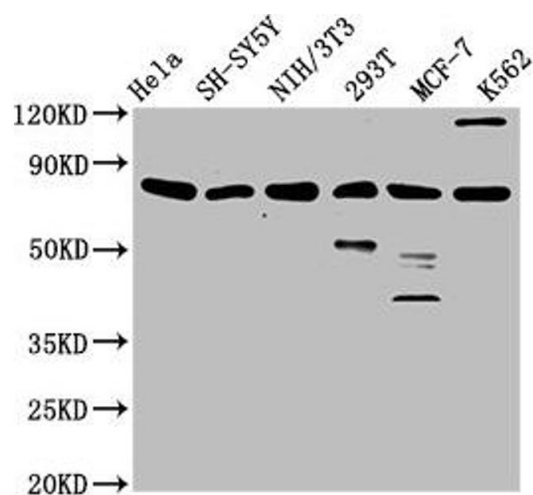
Buffer: Preservative: 0.03 % Proclin 300  
Constituents: 50 % Glycerol, 0.01M PBS, pH 7.4

Preservative: ProClin

Precaution of Use: This product contains ProClin: a POISONOUS AND HAZARDOUS SUBSTANCE which should be handled by trained staff only.

Storage: -20 °C,-80 °C

Storage Comment: Upon receipt, store at -20°C or -80°C. Avoid repeated freeze.



Western Blotting

**Image 1.** Western Blot Positive WB detected in: HeLa whole cell lysate, SH-SY5Y whole cell lysate, NIH/3T3 whole cell lysate, 293T whole cell lysate, MCF-7 whole cell lysate, K562 whole cell lysate All lanes: KMT2E antibody at 3.1 µg/mL Secondary Goat polyclonal to rabbit IgG at 1/50000 dilution Predicted band size: 205, 196, 69, 99, 186, 181, 201, 132 kDa Observed band size: 80 kDa