



[Go to Product page](#)

Datasheet for ABIN7155475
anti-EZH1 antibody (AA 160-280)

2 Images

Overview

Quantity:	100 µL
Target:	EZH1
Binding Specificity:	AA 160-280
Reactivity:	Human
Host:	Rabbit
Clonality:	Polyclonal
Conjugate:	This EZH1 antibody is un-conjugated
Application:	Western Blotting (WB), ELISA, Immunohistochemistry (IHC)

Product Details

Immunogen:	Recombinant Human Histone-lysine N-methyltransferase EZH1 protein (160-280AA)
Isotype:	IgG
Cross-Reactivity:	Human, Mouse
Purification:	Antigen Affinity Purified

Target Details

Target:	EZH1
Alternative Name:	EZH1 (EZH1 Products)
Background:	Background: Polycomb group (PcG) protein. Catalytic subunit of the PRC2/EED-EZH1 complex, which methylates '\Lys-27\' of histone H3, leading to transcriptional repression of the

Target Details

affected target gene. Able to mono-, di- and trimethylate '\\Lys-27\\' of histone H3 to form H3K27me1, H3K27me2 and H3K27me3, respectively. Required for embryonic stem cell derivation and self-renewal, suggesting that it is involved in safeguarding embryonic stem cell identity. Compared to EZH2-containing complexes, it is less abundant in embryonic stem cells, has weak methyltransferase activity and plays a less critical role in forming H3K27me3, which is required for embryonic stem cell identity and proper differentiation.

Aliases: Enhancer of zeste homolog 1 (Drosophila) antibody, Enhancer of zeste homolog 1 antibody, ENX-2 antibody, ENX2 antibody, Ezh1 antibody, EZH1_HUMAN antibody, Histone-lysine N-methyltransferase EZH1 antibody

UniProt: [Q92800](#)

Application Details

Application Notes: Recommended dilution: WB:1:500-1:2000, IHC:1:20-1:200,

Restrictions: For Research Use only

Handling

Format: Liquid

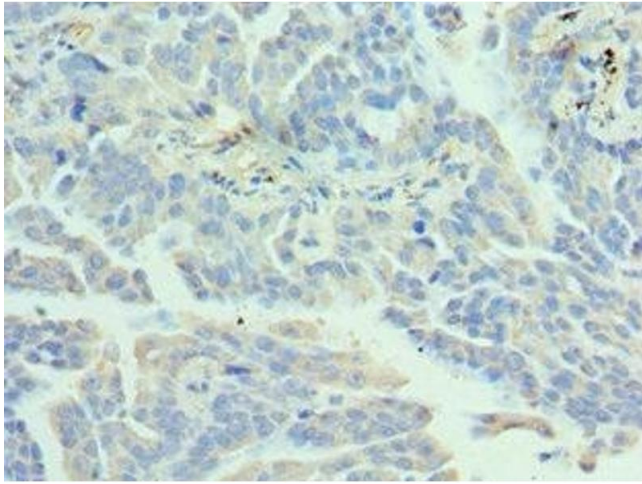
Buffer: PBS with 0.02 % sodium azide, 50 % glycerol, pH 7.3.

Preservative: Sodium azide

Precaution of Use: This product contains Sodium azide: a POISONOUS AND HAZARDOUS SUBSTANCE which should be handled by trained staff only.

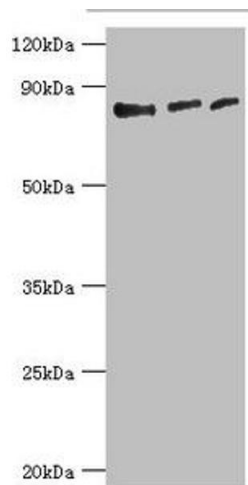
Storage: -20 °C,-80 °C

Storage Comment: Upon receipt, store at -20°C or -80°C. Avoid repeated freeze.



Immunohistochemistry

Image 1. Immunohistochemistry of paraffin-embedded human lung cancer using ABIN7155475 at dilution of 1:100



Western Blotting

Image 2. Western blot All lanes: Histone-lysine N-methyltransferase EZH1 antibody at 4 µg/mL Lane 1: Hela whole cell lysate Lane 2: HL60 whole cell lysate Lane 3: Mouse gonad tissue Secondary Goat polyclonal to rabbit IgG at 1/10000 dilution Predicted band size: 86, 87, 81, 77, 69 kDa Observed band size: 86 kDa