

Datasheet for ABIN7155485

**anti-SUV420H2/KMT5C antibody (AA 235-345)**[Go to Product page](#)**2** Images

## Overview

|                      |   |
|----------------------|---|
| Quantity:            | 100 µL  |
| Target:              | SUV420H2/KMT5C (SUV420H2)                             |
| Binding Specificity: | AA 235-345  |
| Reactivity:          | Human   |
| Host:                | Rabbit  |
| Clonality:           | Polyclonal  |
| Conjugate:           | This SUV420H2/KMT5C antibody is un-conjugated         |
| Application:         | Western Blotting (WB), ELISA, Immunofluorescence (IF) |

## Product Details

|                   |  |
|-------------------|--|
| Immunogen:        | Recombinant Human Histone-lysine N-methyltransferase KMT5C protein (235-345aa) |
| Isotype:          | IgG  |
| Cross-Reactivity: | Human  |
| Purification:     | >95%, Protein G purified   |

## Target Details

|                   |  |
|-------------------|--|
| Target:           | SUV420H2/KMT5C (SUV420H2)  |
| Alternative Name: | KMT5C ( <a href="#">SUV420H2 Products</a> )  |
| Background:       | Background: Histone methyltransferase that specifically trimethylates 'Lys-20' of histone H4.<br>H4 'Lys-20' trimethylation represents a specific tag for epigenetic transcriptional repression. |

## Target Details

Mainly functions in pericentric heterochromatin regions, thereby playing a central role in the establishment of constitutive heterochromatin in these regions. KMT5C is targeted to histone H3 via its interaction with RB1 family proteins (RB1, RBL1 and RBL2) (By similarity).

Aliases: Histone-lysine N-methyltransferase KMT5C (EC 2.1.1.43) (Lysine N-methyltransferase 5C) (Lysine-specific methyltransferase 5C) (Suppressor of variegation 4-20 homolog 2) (Su(var)4-20 homolog 2) (Suv4-20h2), KMT5C, SUV420H2

UniProt: [Q86Y97](#)

## Application Details

Application Notes: Recommended dilution: WB:1:1000-1:5000, IF:1:100-1:500,

Restrictions: For Research Use only

## Handling

Format: Liquid

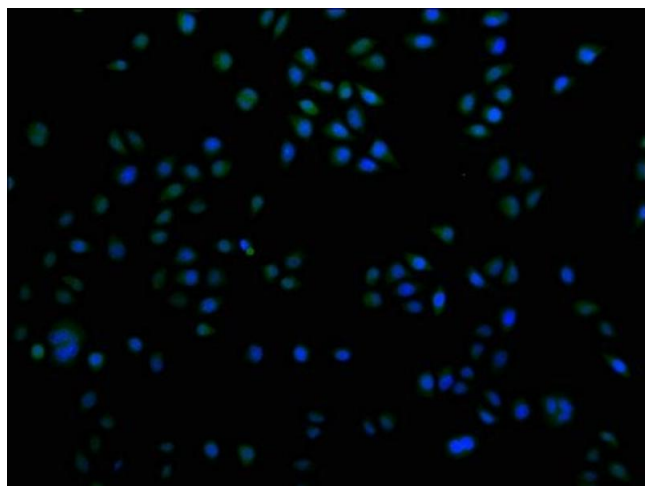
Buffer: Preservative: 0.03 % Proclin 300  
Constituents: 50 % Glycerol, 0.01M PBS, pH 7.4

Preservative: ProClin

Precaution of Use: This product contains ProClin: a POISONOUS AND HAZARDOUS SUBSTANCE which should be handled by trained staff only.

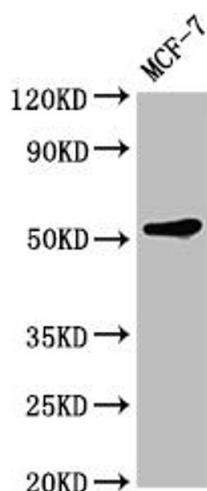
Storage: -20 °C, -80 °C

Storage Comment: Upon receipt, store at -20°C or -80°C. Avoid repeated freeze.



### Immunofluorescence

**Image 1.** Immunofluorescence staining of HeLa cells with ABIN7155485 at 1:100, counter-stained with DAPI. The cells were fixed in 4 % formaldehyde and blocked in 10 % normal Goat Serum. The cells were then incubated with the antibody overnight at 4 °C. The secondary antibody was Alexa Fluor 488-conjugated AffiniPure Goat Anti-Rabbit IgG(H+L).



### Western Blotting

**Image 2.** Western Blot Positive WB detected in: MCF-7 whole cell lysate All lanes: KMT5C antibody at 1:2000 Secondary Goat polyclonal to rabbit IgG at 1/50000 dilution Predicted band size: 53 kDa Observed band size: 53 kDa