

Datasheet for ABIN7155513
anti-SETD3 antibody (AA 166-265)[Go to Product page](#)

2 Images

Overview

Quantity:	100 µg
Target:	SETD3
Binding Specificity:	AA 166-265
Reactivity:	Human
Host:	Rabbit
Clonality:	Polyclonal
Conjugate:	This SETD3 antibody is un-conjugated
Application:	ELISA, Immunohistochemistry (IHC)

Product Details

Immunogen:	Recombinant Human Histone-lysine N-methyltransferase setd3 protein (166-265AA)
Isotype:	IgG
Cross-Reactivity:	Human
Purification:	>95%, Protein G purified

Target Details

Target:	SETD3
Alternative Name:	SETD3 (SETD3 Products)
Background:	Background: Histone methyltransferase that methylates '\\Lys-4\\' and '\\Lys-36\\' of histone H3 (H3K4me and H3K36me). Acts as a transcriptional activator. Plays an important

Target Details

role in the transcriptional regulation of muscle cell differentiation via interaction with MYOD1.
Aliases: C14orf154 antibody, Chromosome 14 open reading frame 154 antibody, DKFZp761E1415 antibody, FLJ23027 antibody, Histone lysine N methyltransferase setd3 antibody, Histone-lysine N-methyltransferase setd3 antibody, MGC87236 antibody, SET domain containing 3 antibody, SET domain containing protein 3 antibody, SET domain-containing protein 3 antibody, SETD 3 antibody, Setd3 antibody, SETD3_HUMAN antibody

UniProt: [Q86TU7](#)

Pathways: [Regulation of Muscle Cell Differentiation](#)

Application Details

Application Notes: Recommended dilution: IHC:1:200-1:500,

Restrictions: For Research Use only

Handling

Format: Liquid

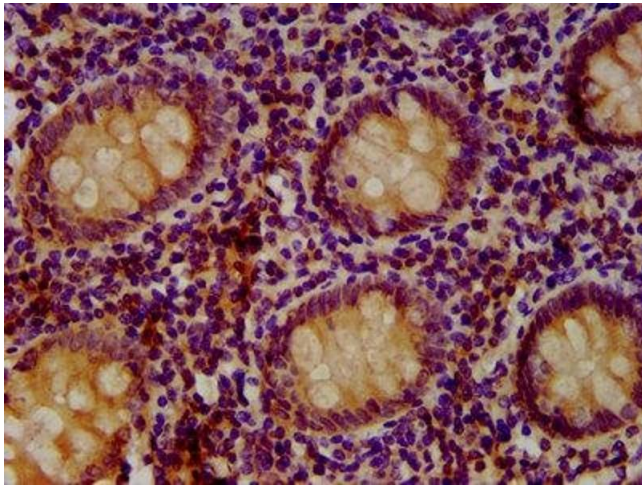
Buffer: Preservative: 0.03 % Proclin 300
Constituents: 50 % Glycerol, 0.01M PBS, pH 7.4

Preservative: ProClin

Precaution of Use: This product contains ProClin: a POISONOUS AND HAZARDOUS SUBSTANCE which should be handled by trained staff only.

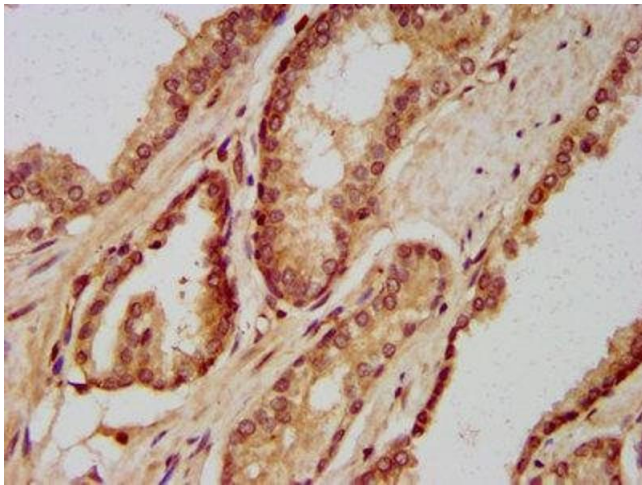
Storage: -20 °C,-80 °C

Storage Comment: Upon receipt, store at -20°C or -80°C. Avoid repeated freeze.



Immunohistochemistry

Image 1. IHC image of ABIN7155513 diluted at 1:400 and staining in paraffin-embedded human appendix tissue performed on a Leica Bond™ system. After dewaxing and hydration, antigen retrieval was mediated by high pressure in a citrate buffer (pH 6.0). Section was blocked with 10% normal goat serum 30min at RT. Then primary antibody (1% BSA) was incubated at 4°C overnight. The primary is detected by a biotinylated secondary antibody and visualized using an HRP conjugated SP system.



Immunohistochemistry

Image 2. IHC image of ABIN7155513 diluted at 1:400 and staining in paraffin-embedded human prostate cancer performed on a Leica Bond™ system. After dewaxing and hydration, antigen retrieval was mediated by high pressure in a citrate buffer (pH 6.0). Section was blocked with 10% normal goat serum 30min at RT. Then primary antibody (1% BSA) was incubated at 4°C overnight. The primary is detected by a biotinylated secondary antibody and visualized using an HRP conjugated SP system.