

Datasheet for ABIN7155517
anti-SETD7 antibody (AA 1-218)[Go to Product page](#)

2 Images

Overview

Quantity:	100 µg
Target:	SETD7
Binding Specificity:	AA 1-218
Reactivity:	Human
Host:	Rabbit
Clonality:	Polyclonal
Conjugate:	This SETD7 antibody is un-conjugated
Application:	Western Blotting (WB), ELISA, Immunohistochemistry (IHC)

Product Details

Immunogen:	Recombinant Human Histone-lysine N-methyltransferase SETD7 protein (1-218AA)
Isotype:	IgG
Cross-Reactivity:	Human
Purification:	>95%, Protein G purified

Target Details

Target:	SETD7
Alternative Name:	SETD7 (SETD7 Products)
Background:	Background: Histone methyltransferase that specifically monomethylates '\Lys-4\' of histone H3. H3 '\Lys-4\' methylation represents a specific tag for epigenetic transcriptional

Target Details

activation. Plays a central role in the transcriptional activation of genes such as collagenase or insulin. Recruited by IPF1/PDX-1 to the insulin promoter, leading to activate transcription. Has also methyltransferase activity toward non-histone proteins such as p53/TP53, TAF10, and possibly TAF7 by recognizing and binding the [KR]-[STA]-K in substrate proteins.

Monomethylates '\\Lys-189\\' of TAF10, leading to increase the affinity of TAF10 for RNA polymerase II. Monomethylates '\\Lys-372\\' of p53/TP53, stabilizing p53/TP53 and increasing p53/TP53-mediated transcriptional activation.

Aliases: FLJ21193 antibody, H3 K4 HMTase antibody, H3-K4-HMTase SETD7 antibody, H4 lysine 4 specific antibody, Histone H3 K4 methyltransferase antibody, Histone H3 lysine 4 specific methyltransferase antibody, Histone H3-K4 methyltransferase SETD7 antibody, Histone H4 K4 methyltransferase antibody, Histone lysine N methyltransferase antibody, Histone lysine N methyltransferase H3 lysine 4 specific SET7 antibody, Histone-lysine N-methyltransferase SETD7 antibody, KIAA1717 antibody, KMT7 antibody, Lysine methyltransferase antibody, Lysine N-methyltransferase 7 antibody, OTTHUMP00000164543 antibody, OTTHUMP00000220049 antibody, SET 7 antibody, SET 7/9 antibody, SET 9 antibody, SET D7 antibody, SET domain containing (lysine methyltransferase) 7 antibody, SET domain containing protein 7 antibody, SET domain containing protein 8 antibody, SET domain-containing protein 7 antibody, SET7 antibody, SET7/9 antibody, SET9 antibody, Setd7 antibody, SETD7_HUMAN antibody

UniProt: [Q8WTS6](#)

Application Details

Application Notes: Recommended dilution: WB:1:500-1:2000, IHC:1:20-1:200,

Restrictions: For Research Use only

Handling

Format: Liquid

Buffer: Preservative: 0.03 % Proclin 300
Constituents: 50 % Glycerol, 0.01M PBS, PH 7.4

Preservative: ProClin

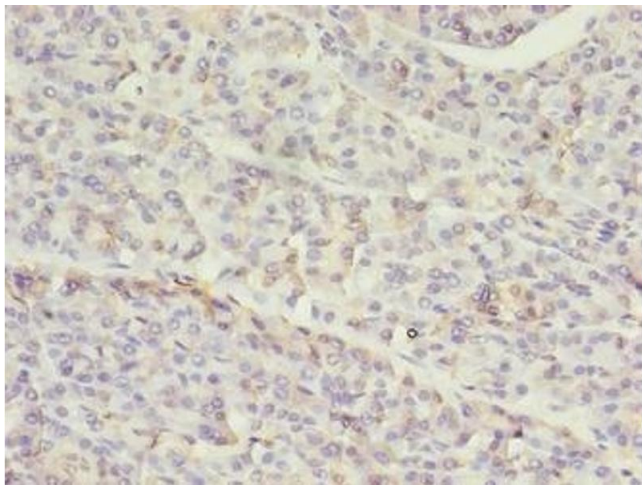
Precaution of Use: This product contains ProClin: a POISONOUS AND HAZARDOUS SUBSTANCE which should be handled by trained staff only.

Storage: -20 °C,-80 °C

Handling

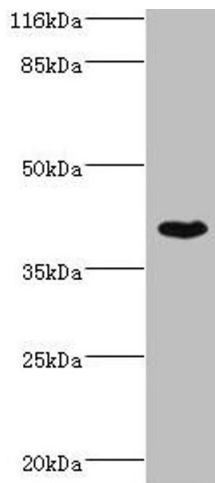
Storage Comment: Upon receipt, store at -20°C or -80°C. Avoid repeated freeze.

Images



Immunohistochemistry

Image 1. Immunohistochemistry of paraffin-embedded human pancreatic tissue using ABIN7155517 at dilution of 1:100



Western Blotting

Image 2. Western blot All lanes: SETD7 antibody at 4 µg/mL + MCF-7 whole cell lysate Secondary Goat polyclonal to rabbit IgG at 1/10000 dilution Predicted band size: 41 kDa Observed band size: 41 kDa