

Datasheet for ABIN7155555  
**anti-HLA-B antibody (AA 243-308)**[Go to Product page](#)

## 2 Images

## Overview

Quantity:	100 µL
Target:	HLA-B
Binding Specificity:	AA 243-308
Reactivity:	Human
Host:	Rabbit
Clonality:	Polyclonal
Conjugate:	This HLA-B antibody is un-conjugated
Application:	Western Blotting (WB), ELISA, Immunofluorescence (IF)

## Product Details

Immunogen:	Recombinant Human HLA class I histocompatibility antigen, B-27 alpha chain protein (243-308aa)
Isotype:	IgG
Cross-Reactivity:	Human
Purification:	>95%, Protein G purified

## Target Details

Target:	HLA-B
Alternative Name:	HLA-B ( <a href="#">HLA-B Products</a> )
Background:	Background: Involved in the presentation of foreign antigens to the immune system.

## Target Details

Aliases: HLA class I histocompatibility antigen, B-27 alpha chain (MHC class I antigen B\*27), HLA-B, HLAB

UniProt: [P03989](#)

Pathways: [Regulation of Leukocyte Mediated Immunity](#), [Positive Regulation of Immune Effector Process](#), [Cancer Immune Checkpoints](#), [Human Leukocyte Antigen \(HLA\) in Adaptive Immune Response](#)

## Application Details

Application Notes: Recommended dilution: WB:1:1000-1:5000, IF:1:100-1:500,

Restrictions: For Research Use only

## Handling

Format: Liquid

Buffer: Preservative: 0.03 % Proclin 300  
Constituents: 50 % Glycerol, 0.01M PBS, pH 7.4

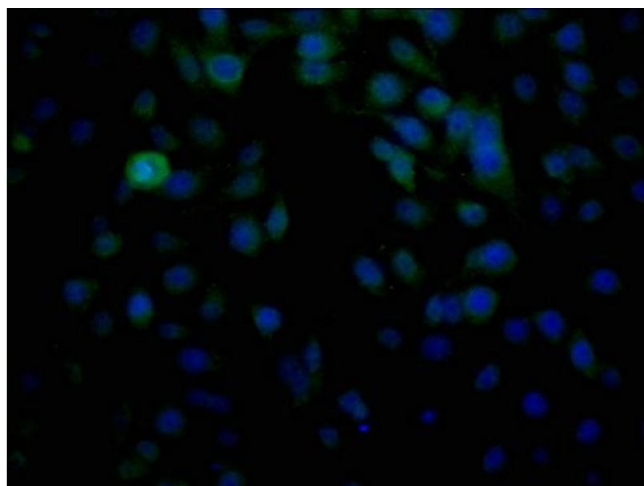
Preservative: ProClin

Precaution of Use: This product contains ProClin: a POISONOUS AND HAZARDOUS SUBSTANCE which should be handled by trained staff only.

Storage: -20 °C,-80 °C

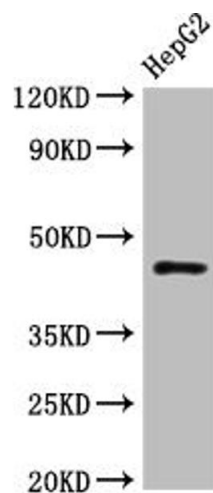
Storage Comment: Upon receipt, store at -20°C or -80°C. Avoid repeated freeze.

## Images



### Immunofluorescence

**Image 1.** Immunofluorescence staining of HepG2 cells with ABIN7155555 at 1:100, counter-stained with DAPI. The cells were fixed in 4 % formaldehyde and blocked in 10 % normal Goat Serum. The cells were then incubated with the antibody overnight at 4 °C. The secondary antibody was Alexa Fluor 488-conjugated AffiniPure Goat Anti-Rabbit IgG(H+L).



#### Western Blotting

**Image 2.** Western Blot Positive WB detected in: HepG2 whole cell lysate All lanes: HLA-B antibody at 1:1000 Secondary Goat polyclonal to rabbit IgG at 1/50000 dilution Predicted band size: 41 kDa Observed band size: 45 kDa