



Datasheet for ABIN715556
anti-SLITRK1 antibody (AA 21-120)



[Go to Product page](#)

1 Image

Overview

Quantity:	100 µL
Target:	SLITRK1
Binding Specificity:	AA 21-120
Reactivity:	Rat
Host:	Rabbit
Clonality:	Polyclonal
Conjugate:	This SLITRK1 antibody is un-conjugated
Application:	ELISA, Immunofluorescence (Cultured Cells) (IF (cc)), Immunofluorescence (Paraffin-embedded Sections) (IF (p)), Immunohistochemistry (Paraffin-embedded Sections) (IHC (p)), Immunohistochemistry (Frozen Sections) (IHC (fro)), Immunocytochemistry (ICC)

Product Details

Immunogen:	KLH conjugated synthetic peptide derived from human Slitrk1
Isotype:	IgG
Cross-Reactivity:	Rat
Predicted Reactivity:	Human,Mouse,Dog,Cow,Pig,Horse,Chicken,Rabbit
Purification:	Purified by Protein A.

Target Details

Target:	SLITRK1
---------	---------

Target Details

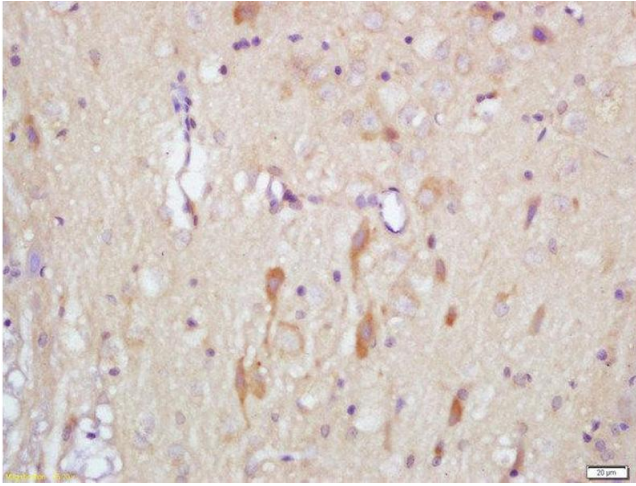
Alternative Name:	Slitrk1 (SLITRK1 Products)
Background:	Synonyms: TTM, LRRC12, SLIT and NTRK-like protein 1, Leucine-rich repeat-containing protein 12, SLITRK1, KIAA1910, UNQ233/PRO266 Background: Enhances neuronal dendrite outgrowth.
Gene ID:	114798
UniProt:	Q96PX8

Application Details

Application Notes:	ELISA 1:500-1000 IHC-P 1:200-400 IHC-F 1:100-500 IF(IHC-P) 1:50-200 IF(IHC-F) 1:50-200 IF(ICC) 1:50-200 ICC 1:100-500
Restrictions:	For Research Use only

Handling

Format:	Liquid
Concentration:	1 µg/µL
Buffer:	0.01M TBS(pH 7.4) with 1 % BSA, 0.02 % Proclin300 and 50 % Glycerol.
Preservative:	ProClin
Precaution of Use:	This product contains ProClin: a POISONOUS AND HAZARDOUS SUBSTANCE, which should be handled by trained staff only.
Storage:	4 °C,-20 °C
Storage Comment:	Shipped at 4°C. Store at -20°C for one year. Avoid repeated freeze/thaw cycles.
Expiry Date:	12 months



Immunohistochemistry (Paraffin-embedded Sections)

Image 1. Formalin-fixed and paraffin embedded rat brain labeled with Rabbit Anti-Slitrk1 Polyclonal Antibody, Unconjugated (ABIN715556) at 1:200 followed by conjugation to the secondary antibody and DAB staining