

Datasheet for ABIN7155567  
**anti-HLA-C antibody (AA 200-306)**[Go to Product page](#)

## 2 Images

## Overview

Quantity:	100 µg
Target:	HLA-C
Binding Specificity:	AA 200-306
Reactivity:	Human
Host:	Rabbit
Clonality:	Polyclonal
Conjugate:	This HLA-C antibody is un-conjugated
Application:	ELISA, Immunohistochemistry (IHC), Immunofluorescence (IF)

## Product Details

Immunogen:	Recombinant Human HLA class I histocompatibility antigen, Cw-3 alpha chain protein (200-306AA)
Isotype:	IgG
Cross-Reactivity:	Human
Purification:	>95%, Protein G purified

## Target Details

Target:	HLA-C
Alternative Name:	HLA-C ( <a href="#">HLA-C Products</a> )
Background:	Background: Involved in the presentation of foreign antigens to the immune system.

## Target Details

Aliases: HLA class I histocompatibility antigen, Cw-3 alpha chain (MHC class I antigen Cw\*3), HLA-C, HLAC

UniProt: [P04222](#)

Pathways: [Regulation of Leukocyte Mediated Immunity](#), [Positive Regulation of Immune Effector Process](#), [Human Leukocyte Antigen \(HLA\) in Adaptive Immune Response](#)

## Application Details

Application Notes: Recommended dilution: IHC:1:20-1:200, IF:1:50-1:200,

Restrictions: For Research Use only

## Handling

Format: Liquid

Buffer: Preservative: 0.03 % Proclin 300  
Constituents: 50 % Glycerol, 0.01M PBS, pH 7.4

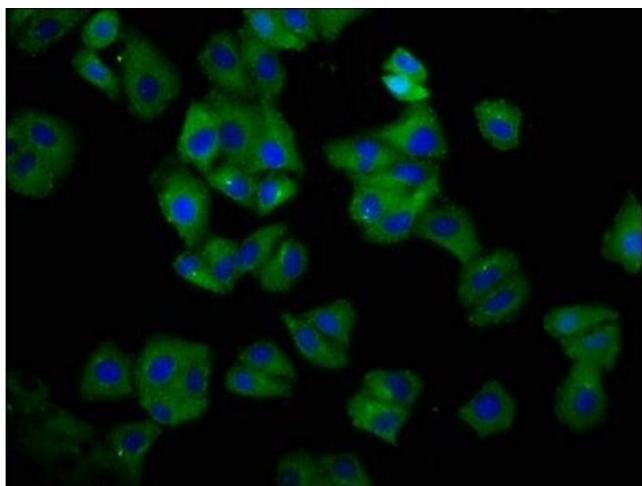
Preservative: ProClin

Precaution of Use: This product contains ProClin: a POISONOUS AND HAZARDOUS SUBSTANCE which should be handled by trained staff only.

Storage: -20 °C,-80 °C

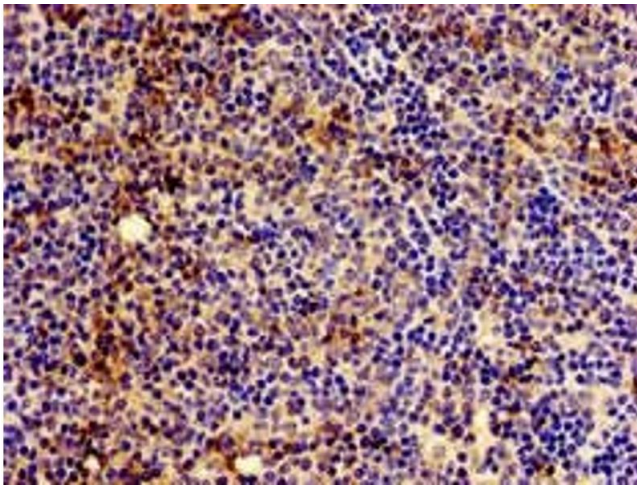
Storage Comment: Upon receipt, store at -20°C or -80°C. Avoid repeated freeze.

## Images



### Immunofluorescence

**Image 1.** Immunofluorescence staining of HepG2 cells with ABIN7155567 at 1:66, counter-stained with DAPI. The cells were fixed in 4% formaldehyde, permeabilized using 0.2% Triton X-100 and blocked in 10% normal Goat Serum. The cells were then incubated with the antibody overnight at 4°C. The secondary antibody was Alexa Fluor 488-conjugated AffiniPure Goat Anti-Rabbit IgG(H+L).



#### Immunohistochemistry

**Image 2.** Immunohistochemistry of paraffin-embedded human lymph node tissue using ABIN7155567 at dilution of 1:100