

Datasheet for ABIN7155597
anti-HLA-DQB1 antibody (AA 128-175)[Go to Product page](#)

4 Images

Overview

Quantity:	100 µg
Target:	HLA-DQB1
Binding Specificity:	AA 128-175
Reactivity:	Human
Host:	Rabbit
Clonality:	Polyclonal
Conjugate:	This HLA-DQB1 antibody is un-conjugated
Application:	Western Blotting (WB), ELISA, Immunohistochemistry (IHC)

Product Details

Immunogen:	Recombinant Human HLA class II histocompatibility antigen, DQ beta 1 chain protein (128-175AA)
Isotype:	IgG
Cross-Reactivity:	Human, Mouse
Purification:	>95%, Protein G purified

Target Details

Target:	HLA-DQB1
Alternative Name:	HLA-DQB1 (HLA-DQB1 Products)
Background:	Background: Binds peptides derived from antigens that access the endocytic route of antigen

presenting cells (APC) and presents them on the cell surface for recognition by the CD4 T-cells. The peptide binding cleft accommodates peptides of 10-30 residues. The peptides presented by MHC class II molecules are generated mostly by degradation of proteins that access the endocytic route, where they are processed by lysosomal proteases and other hydrolases. Exogenous antigens that have been endocytosed by the APC are thus readily available for presentation via MHC II molecules, and for this reason this antigen presentation pathway is usually referred to as exogenous. As membrane proteins on their way to degradation in lysosomes as part of their normal turn-over are also contained in the endosomal/lysosomal compartments, exogenous antigens must compete with those derived from endogenous components. Autophagy is also a source of endogenous peptides, autophagosomes constitutively fuse with MHC class II loading compartments. In addition to APCs, other cells of the gastrointestinal tract, such as epithelial cells, express MHC class II molecules and CD74 and act as APCs, which is an unusual trait of the GI tract. To produce a MHC class II molecule that presents an antigen, three MHC class II molecules (heterodimers of an alpha and a beta chain) associate with a CD74 trimer in the ER to form a heterononamer. Soon after the entry of this complex into the endosomal/lysosomal system where antigen processing occurs, CD74 undergoes a sequential degradation by various proteases, including CTSS and CTSL, leaving a small fragment termed CLIP (class-II-associated invariant chain peptide). The removal of CLIP is facilitated by HLA-DM via direct binding to the alpha-beta-CLIP complex so that CLIP is released. HLA-DM stabilizes MHC class II molecules until primary high affinity antigenic peptides are bound. The MHC II molecule bound to a peptide is then transported to the cell membrane surface. In B-cells, the interaction between HLA-DM and MHC class II molecules is regulated by HLA-DO. Primary dendritic cells (DCs) also to express HLA-DO. Lysosomal microenvironment has been implicated in the regulation of antigen loading into MHC II molecules, increased acidification produces increased proteolysis and efficient peptide loading. Aliases: CELIAC1 antibody, DQ beta 1 chain antibody, DQB1_HUMAN antibody, HLA class II histocompatibility antigen antibody, HLA class II histocompatibility antigen, DQ beta 1 chain antibody, HLA class II histocompatibility antigen, DQ beta 2 chain antibody, HLA DQB antibody, HLA DQB1 antibody, HLA-DQB1 antibody, HLA-DQB2 antibody, IDDM1 antibody, Lymphocyte antigen antibody, Major histocompatibility complex class II beta antibody, Major histocompatibility complex, class II, DQ beta 1 antibody, MHC class II antigen DQB1 antibody, MHC class II antigen HLA DQ beta 1 antibody, MHC class II DQ beta chain antibody, MHC class II HLA DQ beta glycoprotein antibody, MHC class2 antigen antibody, MHC DQ beta antibody, OTTHUMP00000029167 antibody, OTTHUMP00000178569 antibody, OTTHUMP00000178570 antibody, OTTHUMP00000178571 antibody

Target Details

UniProt: [P01920](#)

Pathways: [TCR Signaling](#), [Production of Molecular Mediator of Immune Response](#), [Cancer Immune Checkpoints](#), [Human Leukocyte Antigen \(HLA\) in Adaptive Immune Response](#)

Application Details

Application Notes: Recommended dilution: WB:1:200-1:3000, IHC:1:20-1:200,

Restrictions: For Research Use only

Handling

Format: Liquid

Buffer: Preservative: 0.03 % Proclin 300
Constituents: 50 % Glycerol, 0.01M PBS, pH 7.4

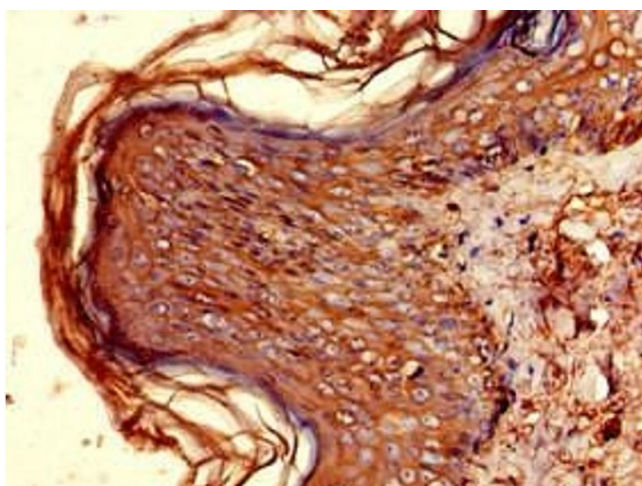
Preservative: ProClin

Precaution of Use: This product contains ProClin: a POISONOUS AND HAZARDOUS SUBSTANCE which should be handled by trained staff only.

Storage: -20 °C,-80 °C

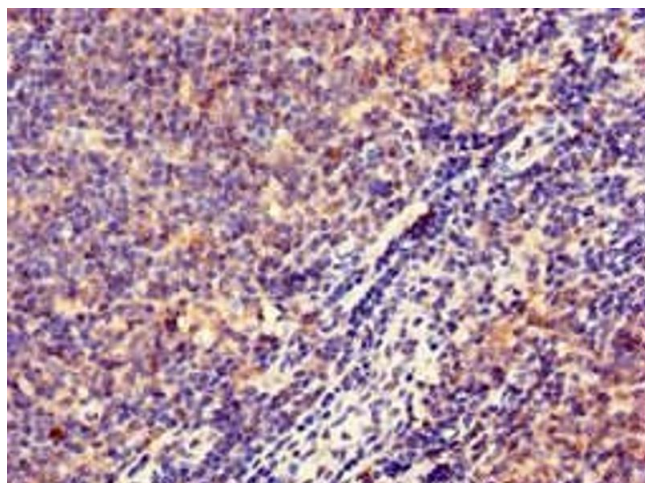
Storage Comment: Upon receipt, store at -20°C or -80°C. Avoid repeated freeze.

Images



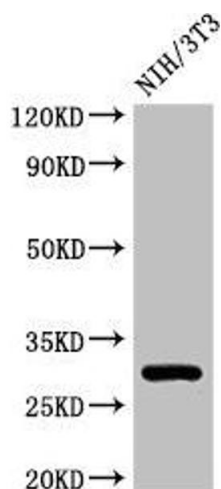
Immunohistochemistry

Image 1. Immunohistochemistry of paraffin-embedded human skin tissue using ABIN7155597 at dilution of 1:100



Immunohistochemistry

Image 2. Immunohistochemistry of paraffin-embedded human lymph node tissue using ABIN7155597 at dilution of 1:100



Western Blotting

Image 3. Western Blot Positive WB detected in: NIH/3T3 whole cell lysate All lanes: HLA-DQB1 antibody at 3 µg/mL Secondary Goat polyclonal to rabbit IgG at 1/50000 dilution Predicted band size: 30 kDa Observed band size: 30 kDa

Please check the [product details page](#) for more images. Overall 4 images are available for ABIN7155597.