



[Go to Product page](#)

Datasheet for ABIN7155622

anti-HLA-B antibody (AA 25-308) (Biotin)

2 Images

Overview

Quantity:	100 µg
Target:	HLA-B
Binding Specificity:	AA 25-308
Reactivity:	Human
Host:	Rabbit
Clonality:	Polyclonal
Conjugate:	This HLA-B antibody is conjugated to Biotin
Application:	ELISA, Immunohistochemistry (IHC)

Product Details

Immunogen:	Recombinant Human HLA-B protein (25-308AA)
Isotype:	IgG
Cross-Reactivity:	Human
Purification:	>95%, Protein G purified

Target Details

Target:	HLA-B
Alternative Name:	HLA-B (HLA-B Products)
Background:	Background: Involved in the presentation of foreign antigens to the immune system Aliases: HLA class I histocompatibility antigen, B-14 alpha chain (MHC class I antigen B*14),

Target Details

HLA-B, HLAB

UniProt: [Q96DW9](#)

Pathways: [Regulation of Leukocyte Mediated Immunity](#), [Positive Regulation of Immune Effector Process](#), [Cancer Immune Checkpoints](#), [Human Leukocyte Antigen \(HLA\) in Adaptive Immune Response](#)

Application Details

Application Notes: Recommended dilution: IHC:1:20-1:200,

Restrictions: For Research Use only

Handling

Format: Liquid

Buffer: Preservative: 0.03 % Proclin 300
Constituents: 50 % Glycerol, 0.01M PBS, PH 7.4

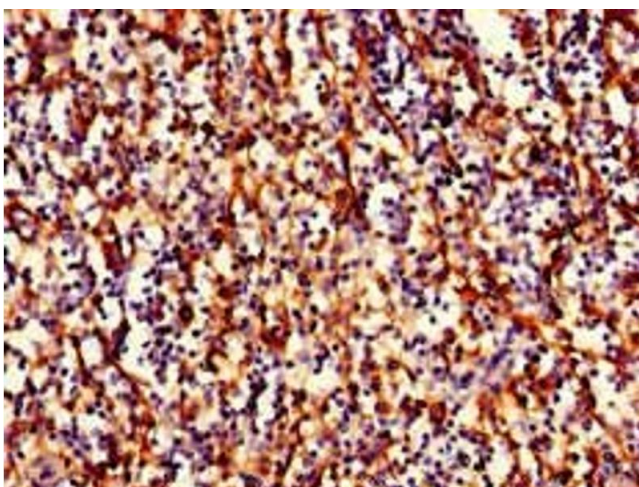
Preservative: ProClin

Precaution of Use: This product contains ProClin: a POISONOUS AND HAZARDOUS SUBSTANCE which should be handled by trained staff only.

Storage: -20 °C,-80 °C

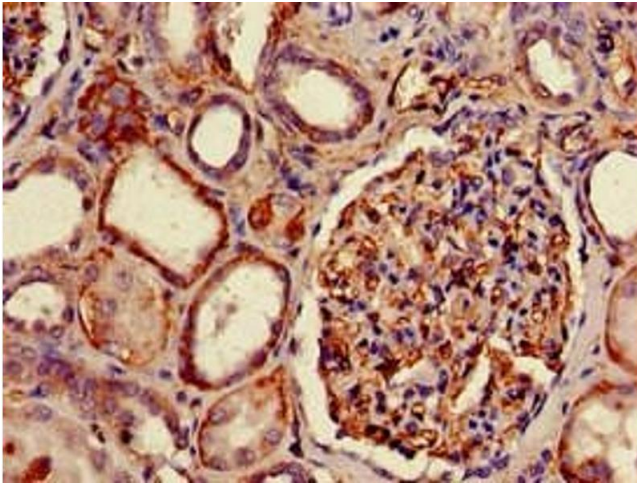
Storage Comment: Upon receipt, store at -20°C or -80°C. Avoid repeated freeze.

Images



Immunohistochemistry

Image 1. Immunohistochemistry of paraffin-embedded human spleen tissue using ABIN7155622 at dilution of 1:100



Immunohistochemistry

Image 2. Immunohistochemistry of paraffin-embedded human kidney tissue using ABIN7155622 at dilution of 1:100