



[Go to Product page](#)

Datasheet for ABIN7155677

anti-DLX2 antibody (AA 1-140)

2 Images

Overview

Quantity:	100 µL
Target:	DLX2
Binding Specificity:	AA 1-140
Reactivity:	Human
Host:	Rabbit
Clonality:	Polyclonal
Conjugate:	This DLX2 antibody is un-conjugated
Application:	ELISA, Immunohistochemistry (IHC)

Product Details

Immunogen:	Recombinant Human Homeobox protein DLX-2 protein (1-140AA)
Isotype:	IgG
Cross-Reactivity:	Human
Purification:	Antigen Affinity Purified

Target Details

Target:	DLX2
Alternative Name:	DLX2 (DLX2 Products)
Background:	Background: Likely to play a regulatory role in the development of the ventral forebrain. May play a role in craniofacial patterning and morphogenesis.

Target Details

Aliases: Dll A antibody, Distal less homeo box 2 antibody, Distal less homeobox 2 antibody, DLX 2 antibody, Dlx2 antibody, DLX2_HUMAN antibody, Dlx5 antibody, Homeobox protein DLX 2 antibody, Homeobox protein DLX-2 antibody, Homeobox protein DLX2 antibody, Homeobox protein TES 1 antibody, Homeobox protein TES1 antibody, Tes 1 antibody, Tes1 antibody, zgc antibody

UniProt: [Q07687](#)

Application Details

Application Notes: Recommended dilution: IHC:1:20-1:200,

Restrictions: For Research Use only

Handling

Format: Liquid

Buffer: PBS with 0.02 % sodium azide, 50 % glycerol, pH 7.3.

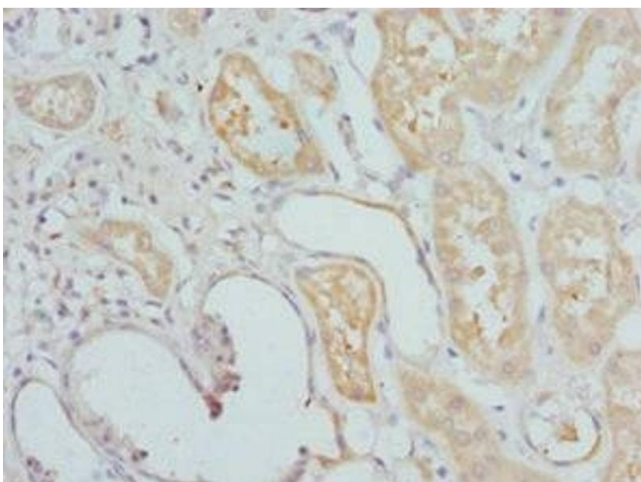
Preservative: Sodium azide

Precaution of Use: This product contains Sodium azide: a POISONOUS AND HAZARDOUS SUBSTANCE which should be handled by trained staff only.

Storage: -20 °C,-80 °C

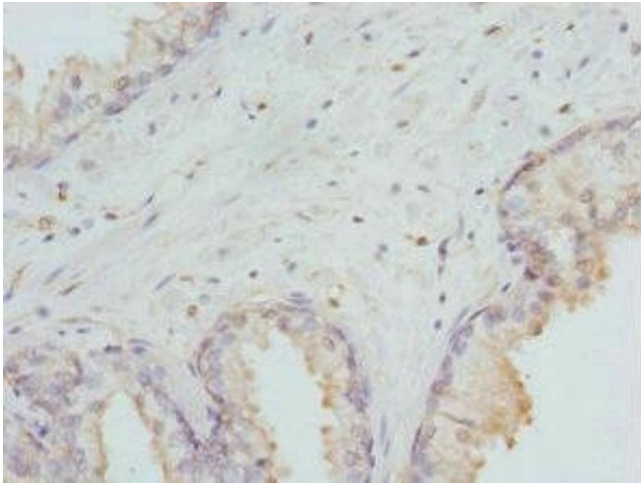
Storage Comment: Upon receipt, store at -20°C or -80°C. Avoid repeated freeze.

Images



Immunohistochemistry

Image 1. Immunohistochemistry of paraffin-embedded human kidney tissue using ABIN7155677 at dilution of 1:100



Immunohistochemistry

Image 2. Immunohistochemistry of paraffin-embedded human prostate cancer using ABIN7155677 at dilution of 1:100