



[Go to Product page](#)

Datasheet for ABIN7155683
anti-DLX6 antibody (AA 110-171)

1 Image

Overview

Quantity:	100 µg
Target:	DLX6
Binding Specificity:	AA 110-171
Reactivity:	Human
Host:	Rabbit
Clonality:	Polyclonal
Conjugate:	This DLX6 antibody is un-conjugated
Application:	Western Blotting (WB), ELISA

Product Details

Immunogen:	Recombinant Human Homeobox protein DLX-6 protein (110-171AA)
Isotype:	IgG
Cross-Reactivity:	Human
Purification:	>95%, Protein G purified

Target Details

Target:	DLX6
Alternative Name:	DLX6 (DLX6 Products)
Background:	Background: transcription factor activity, sequence-specific DNA binding, nervous system development, skeletal system development

Target Details

Aliases: Distal less homeo box 6 antibody, Distal less homeobox 6 antibody, Distal less homeobox gene 6a antibody, DLX6 antibody, DLX6_HUMAN antibody, Homeobox protein DLX-6 antibody, MGC125282 antibody, MGC125283 antibody, MGC125284 antibody, MGC125285 antibody, OTTHUMP00000205294 antibody

UniProt: [P56179](#)

Application Details

Application Notes: Recommended dilution: WB:1:500-1:2000,

Restrictions: For Research Use only

Handling

Format: Liquid

Buffer: Preservative: 0.03 % Proclin 300
Constituents: 50 % Glycerol, 0.01M PBS, pH 7.4

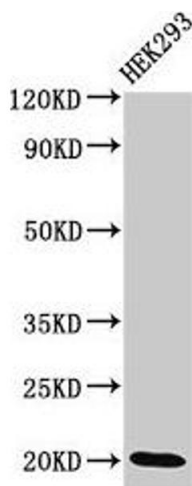
Preservative: ProClin

Precaution of Use: This product contains ProClin: a POISONOUS AND HAZARDOUS SUBSTANCE which should be handled by trained staff only.

Storage: -20 °C,-80 °C

Storage Comment: Upon receipt, store at -20°C or -80°C. Avoid repeated freeze.

Images



Western Blotting

Image 1. Western Blot Positive WB detected in: HEK293 whole cell lysate All lanes: DLX6 antibody at 3.4 µg/mL Secondary Goat polyclonal to rabbit IgG at 1/50000 dilution Predicted band size: 20, 30, 33 kDa Observed band size: 20 kDa