

Datasheet for ABIN7155695
anti-GBX2 antibody (AA 65-248)



[Go to Product page](#)

2 Images

Overview

Quantity:	100 µg
Target:	GBX2
Binding Specificity:	AA 65-248
Reactivity:	Human
Host:	Rabbit
Clonality:	Polyclonal
Conjugate:	This GBX2 antibody is un-conjugated
Application:	ELISA, Immunohistochemistry (IHC)

Product Details

Immunogen:	Recombinant Human Homeobox protein GBX-2 protein (65-248AA)
Isotype:	IgG
Cross-Reactivity:	Human
Purification:	>95%, Protein G purified

Target Details

Target:	GBX2
Alternative Name:	GBX2 (GBX2 Products)
Background:	Background: May act as a transcription factor for cell pluripotency and differentiation in the embryo.

Target Details

Aliases: Gastrulation and brain-specific homeobox protein 2 antibody, Gastrulation brain homeobox 2 antibody, Gastrulation brain homeobox 2 antibody, gbx2 antibody, GBX2_HUMAN antibody, Homeobox protein GBX 2 antibody, Homeobox protein GBX-2 antibody, Homeobox protein GBX2 antibody, Homeobox protein STRA7 antibody, Mmoxa antibody

UniProt: [P52951](#)

Pathways: [Dopaminergic Neurogenesis](#)

Application Details

Application Notes: Recommended dilution: IHC:1:200-1:500,

Restrictions: For Research Use only

Handling

Format: Liquid

Buffer: Preservative: 0.03 % Proclin 300
Constituents: 50 % Glycerol, 0.01M PBS, pH 7.4

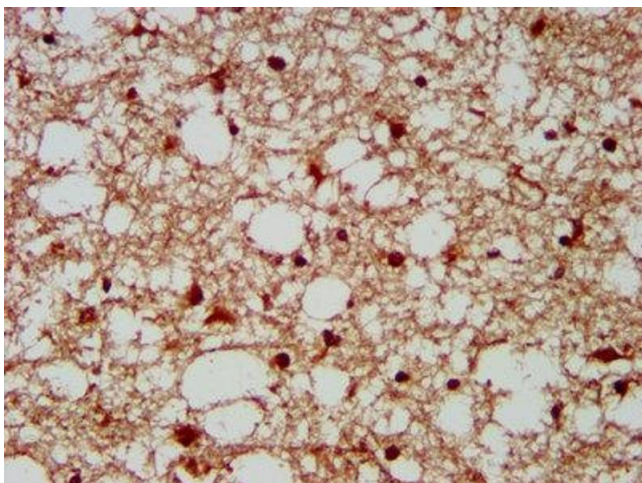
Preservative: ProClin

Precaution of Use: This product contains ProClin: a POISONOUS AND HAZARDOUS SUBSTANCE which should be handled by trained staff only.

Storage: -20 °C,-80 °C

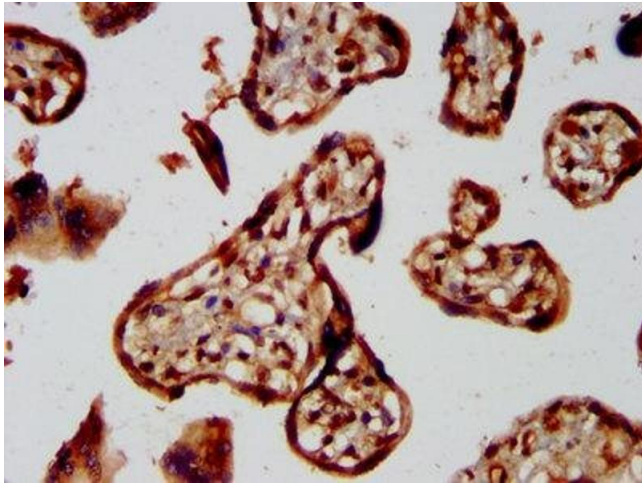
Storage Comment: Upon receipt, store at -20°C or -80°C. Avoid repeated freeze.

Images



Immunohistochemistry

Image 1. IHC image of ABIN7155695 diluted at 1:300 and staining in paraffin-embedded human brain tissue performed on a Leica Bond™ system. After dewaxing and hydration, antigen retrieval was mediated by high pressure in a citrate buffer (pH 6.0). Section was blocked with 10% normal goat serum 30min at RT. Then primary antibody (1% BSA) was incubated at 4°C overnight. The primary is detected by a biotinylated secondary antibody and



visualized using an HRP conjugated SP system.

Immunohistochemistry

Image 2. IHC image of ABIN7155695 diluted at 1:300 and staining in paraffin-embedded human placenta tissue performed on a Leica Bond™ system. After dewaxing and hydration, antigen retrieval was mediated by high pressure in a citrate buffer (pH 6.0). Section was blocked with 10% normal goat serum 30min at RT. Then primary antibody (1% BSA) was incubated at 4°C overnight. The primary is detected by a biotinylated secondary antibody and visualized using an HRP conjugated SP system.