

Datasheet for ABIN7155794  
**anti-MKX antibody (AA 157-305)**[Go to Product page](#)

## 3 Images

## Overview

Quantity:	100 µg
Target:	MKX
Binding Specificity:	AA 157-305
Reactivity:	Human
Host:	Rabbit
Clonality:	Polyclonal
Conjugate:	This MKX antibody is un-conjugated
Application:	Western Blotting (WB), ELISA, Immunohistochemistry (IHC), Immunofluorescence (IF)

## Product Details

Immunogen:	Recombinant Human Homeobox protein Mohawk protein (157-305AA)
Isotype:	IgG
Cross-Reactivity:	Human
Purification:	>95%, Protein G purified

## Target Details

Target:	MKX
Alternative Name:	MKX ( <a href="#">MKX Products</a> )
Background:	Background: May act as a morphogenetic regulator of cell adhesion. Aliases: 9430023B20Rik antibody, C10orf48 antibody, Homeobox protein Mohawk antibody,

## Target Details

IFRX antibody, Iroquois family related homeodomain protein antibody, iroquois homeobox protein like 1 antibody, IRXL1 antibody, MGC39616 antibody, MKX antibody, MKX\_HUMAN antibody, mohawk homeobox antibody, OTTHUMP00000019374 antibody

UniProt: [Q8IYA7](#)

Pathways: [Regulation of Muscle Cell Differentiation](#), [Skeletal Muscle Fiber Development](#)

## Application Details

Application Notes: Recommended dilution: WB:1:500-1:5000, IHC:1:200-1:500, IF:1:50-1:200,

Restrictions: For Research Use only

## Handling

Format: Liquid

Buffer: Preservative: 0.03 % Proclin 300  
Constituents: 50 % Glycerol, 0.01M PBS, pH 7.4

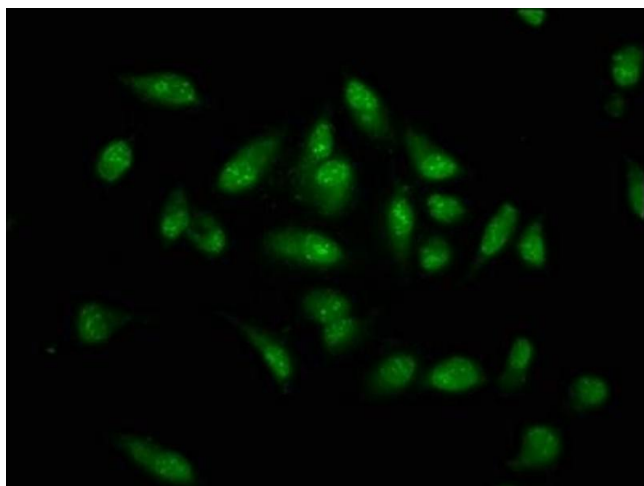
Preservative: ProClin

Precaution of Use: This product contains ProClin: a POISONOUS AND HAZARDOUS SUBSTANCE which should be handled by trained staff only.

Storage: -20 °C,-80 °C

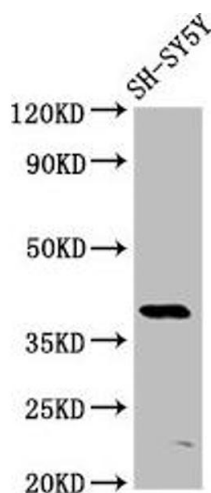
Storage Comment: Upon receipt, store at -20°C or -80°C. Avoid repeated freeze.

## Images



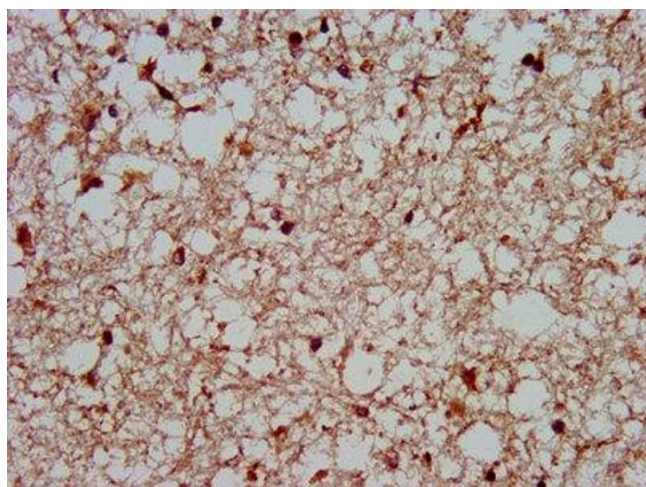
### Immunofluorescence

**Image 1.** Immunofluorescence staining of Hela cells with ABIN7155794 at 1:133, counter-stained with DAPI. The cells were fixed in 4% formaldehyde, permeabilized using 0.2% Triton X-100 and blocked in 10% normal Goat Serum. The cells were then incubated with the antibody overnight at 4°C. The secondary antibody was Alexa Fluor 488-conjugated AffiniPure Goat Anti-Rabbit IgG(H+L).



### Western Blotting

**Image 2.** Western Blot Positive WB detected in: SH-SY5Y whole cell lysate All lanes: MKX antibody at 6 µg/mL Secondary Goat polyclonal to rabbit IgG at 1/50000 dilution Predicted band size: 40 kDa Observed band size: 40 kDa



### Immunohistochemistry

**Image 3.** IHC image of ABIN7155794 diluted at 1:400 and staining in paraffin-embedded human brain tissue performed on a Leica Bond™ system. After dewaxing and hydration, antigen retrieval was mediated by high pressure in a citrate buffer (pH 6.0). Section was blocked with 10% normal goat serum 30min at RT. Then primary antibody (1% BSA) was incubated at 4°C overnight. The primary is detected by a biotinylated secondary antibody and visualized using an HRP conjugated SP system.