

Datasheet for ABIN7155808

anti-Msx2/Hox8 antibody (AA 50-120)[Go to Product page](#)**2** Images

Overview

Quantity:	100 µg
Target:	Msx2/Hox8 (Msx2)
Binding Specificity:	AA 50-120
Reactivity:	Human
Host:	Rabbit
Clonality:	Polyclonal
Conjugate:	This Msx2/Hox8 antibody is un-conjugated
Application:	Western Blotting (WB), ELISA, Immunohistochemistry (IHC)

Product Details

Immunogen:	Recombinant Human Homeobox protein MSX-2 protein (50-120AA)
Isotype:	IgG
Cross-Reactivity:	Human, Rat
Purification:	>95%, Protein G purified

Target Details

Target:	Msx2/Hox8 (Msx2)
Alternative Name:	MSX2 (Msx2 Products)
Background:	Background: Acts as a transcriptional regulator in bone development. Represses the ALPL promoter activity and antagonizes the stimulatory effect of DLX5 on ALPL expression during

Target Details

osteoblast differentiation. Probable morphogenetic role. May play a role in limb-pattern formation. In osteoblasts, suppresses transcription driven by the osteocalcin FGF response element (OCFRE). Binds to the homeodomain-response element of the ALPL promoter.

Aliases: CRS 2 antibody, CRS2 antibody, FPP antibody, Homeo box msh like 2 antibody, Homeobox protein Hox-8 antibody, Homeobox protein MSX 2 antibody, Homeobox protein MSX-2 antibody, Homeobox protein MSX2 antibody, Hox 8 antibody, Hox8 antibody, MSH antibody, Msh homeo box 2 antibody, Msh homeo box homolog antibody, Msh homeo box homolog 2 antibody, Msh homeobox 2 antibody, Msh homeobox homolog 2 antibody, Msx 2 antibody, MSX2 antibody, MSX2_HUMAN antibody, Parietal foramina 1 antibody, PFM 1 antibody, PFM antibody, PFM1 antibody

UniProt: [P35548](#)

Application Details

Application Notes: Recommended dilution: WB:1:500-1:5000, IHC:1:20-1:200,

Restrictions: For Research Use only

Handling

Format: Liquid

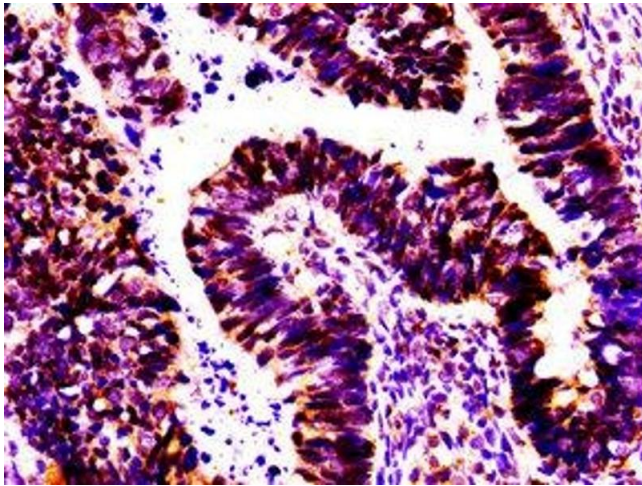
Buffer: Preservative: 0.03 % Proclin 300
Constituents: 50 % Glycerol, 0.01M PBS, pH 7.4

Preservative: ProClin

Precaution of Use: This product contains ProClin: a POISONOUS AND HAZARDOUS SUBSTANCE which should be handled by trained staff only.

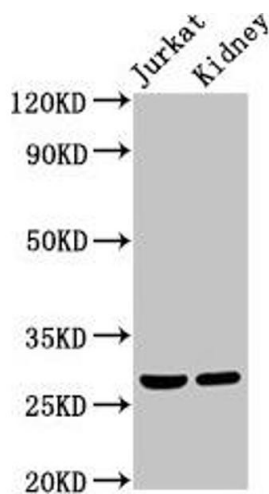
Storage: -20 °C,-80 °C

Storage Comment: Upon receipt, store at -20°C or -80°C. Avoid repeated freeze.



Immunohistochemistry

Image 1. IHC image of ABIN7155808 diluted at 1:100 and staining in paraffin-embedded human ovarian cancer performed on a Leica Bond™ system. After dewaxing and hydration, antigen retrieval was mediated by high pressure in a citrate buffer (pH 6.0). Section was blocked with 10% normal goat serum 30min at RT. Then primary antibody (1% BSA) was incubated at 4°C overnight. The primary is detected by a biotinylated secondary antibody and visualized using an HRP conjugated SP system.



Western Blotting

Image 2. Western Blot Positive WB detected in: Jurkat whole cell lysate, Rat kidney tissue All lanes: MSX2 antibody at 2 µg/mL Secondary Goat polyclonal to rabbit IgG at 1/50000 dilution Predicted band size: 29 kDa Observed band size: 29 kDa