

Datasheet for ABIN7155839
anti-OTX2 antibody (AA 1-297)[Go to Product page](#)

3 Images

Overview

Quantity:	100 µg
Target:	OTX2
Binding Specificity:	AA 1-297
Reactivity:	Human
Host:	Rabbit
Clonality:	Polyclonal
Conjugate:	This OTX2 antibody is un-conjugated
Application:	Western Blotting (WB), ELISA, Immunohistochemistry (IHC)

Product Details

Immunogen:	Recombinant Human Homeobox protein OTX2 protein (1-297AA)
Isotype:	IgG
Cross-Reactivity:	Human, Mouse
Purification:	>95%, Protein G purified

Target Details

Target:	OTX2
Alternative Name:	OTX2 (OTX2 Products)
Background:	Background: Probably plays a role in the development of the brain and the sense organs. Can bind to the BCD target sequence (BTS): 5\\\'-TCTAATCCC-3\\\'.

Target Details

Aliases: CPHD6 antibody, Homeobox protein OTX2 antibody, MCOPS 5 antibody, MCOPS5 antibody, MGC45000 antibody, Orthodenticle 2 antibody, Orthodenticle homeobox 2 antibody, Orthodenticle homolog 2 (Drosophila) antibody, Orthodenticle homolog 2 antibody, Orthodenticle2 antibody, Otx 2 antibody, otx2 antibody, OTX2_HUMAN antibody

UniProt: [P32243](#)

Pathways: [Dopaminergic Neurogenesis](#)

Application Details

Application Notes: Recommended dilution: WB:1:500-1:5000, IHC:1:200-1:500,

Restrictions: For Research Use only

Handling

Format: Liquid

Buffer: Preservative: 0.03 % Proclin 300
Constituents: 50 % Glycerol, 0.01M PBS, PH 7.4

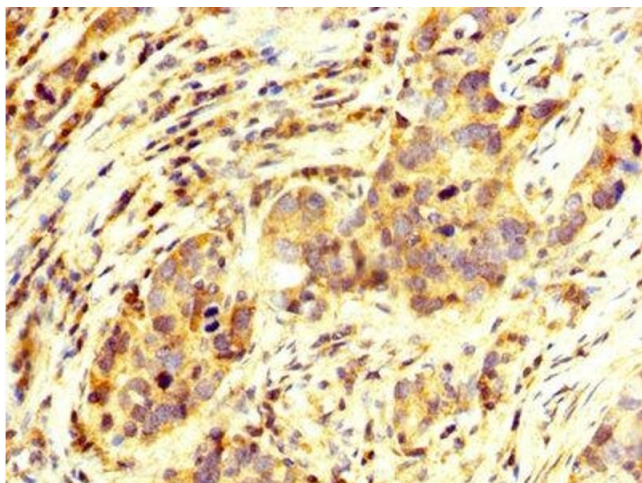
Preservative: ProClin

Precaution of Use: This product contains ProClin: a POISONOUS AND HAZARDOUS SUBSTANCE which should be handled by trained staff only.

Storage: -20 °C,-80 °C

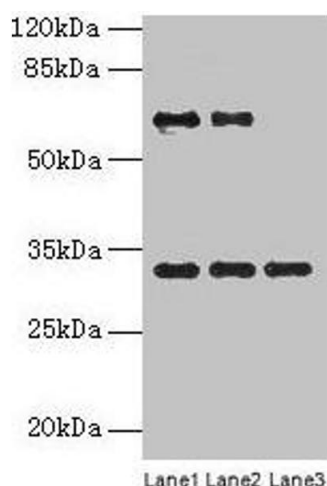
Storage Comment: Upon receipt, store at -20°C or -80°C. Avoid repeated freeze.

Images



Immunohistochemistry

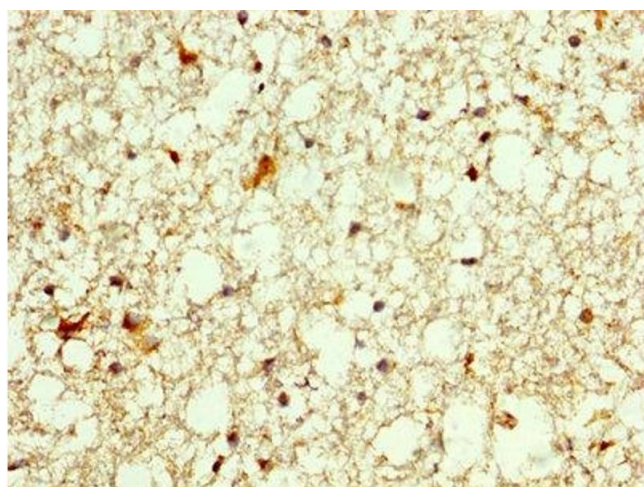
Image 1. IHC image of ABIN7155839 diluted at 1:250 and staining in paraffin-embedded human pancreatic cancer performed on a Leica Bond™ system. After dewaxing and hydration, antigen retrieval was mediated by high pressure in a citrate buffer (pH 6.0). Section was blocked with 10% normal goat serum 30min at RT. Then primary antibody (1% BSA) was incubated at 4°C overnight. The primary is detected by a biotinylated secondary antibody and



visualized using an HRP conjugated SP system.

Western Blotting

Image 2. Western blot All lanes: OTX2 antibody at 4 µg/mL
Lane 1: Jurkat whole cell lysate Lane 2: HeLa whole cell lysate Lane 3: Mouse lung tissue Secondary Goat polyclonal to rabbit IgG at 1/10000 dilution Predicted band size: 32, 33 kDa Observed band size: 32 kDa



Immunohistochemistry

Image 3. IHC image of ABIN7155839 diluted at 1:250 and staining in paraffin-embedded human brain tissue performed on a Leica Bond™ system. After dewaxing and hydration, antigen retrieval was mediated by high pressure in a citrate buffer (pH 6.0). Section was blocked with 10% normal goat serum 30min at RT. Then primary antibody (1% BSA) was incubated at 4°C overnight. The primary is detected by a biotinylated secondary antibody and visualized using an HRP conjugated SP system.