

Datasheet for ABIN7155856  
**anti-TGIF2 antibody (AA 82-222)**[Go to Product page](#)

## 2 Images

## Overview

Quantity:	100 µg
Target:	TGIF2
Binding Specificity:	AA 82-222
Reactivity:	Human
Host:	Rabbit
Clonality:	Polyclonal
Conjugate:	This TGIF2 antibody is un-conjugated
Application:	ELISA, Immunohistochemistry (IHC), Immunofluorescence (IF)

## Product Details

Immunogen:	Recombinant Human Homeobox protein TGIF2 protein (82-222AA)
Isotype:	IgG
Cross-Reactivity:	Human
Purification:	>95%, Protein G purified

## Target Details

Target:	TGIF2
Alternative Name:	TGIF2 ( <a href="#">TGIF2 Products</a> )
Background:	Background: Transcriptional repressor, which probably repress transcription by binding directly the 5'-CTGTCAA-3' DNA sequence or by interacting with TGF-beta activated SMAD proteins.

## Target Details

Probably represses transcription via the recruitment of histone deacetylase proteins.

Aliases: 5' TG 3' interacting factor 2 antibody, 5"-TG-3"-interacting factor 2 antibody, Homeobox protein TGIF2 antibody, TGF (beta) induced transcription factor 2 antibody, TGF beta induced factor 2 antibody, TGF-beta-induced transcription factor 2 antibody, TGFB induced factor 2 antibody, TGFB-induced factor 2 antibody, Tgif2 antibody, TGIF2\_HUMAN antibody, Transforming growth factor beta induced factor 2 antibody

UniProt: [Q9GZN2](#)

## Application Details

Application Notes: Recommended dilution: IHC:1:20-1:200, IF:1:50-1:200,

Restrictions: For Research Use only

## Handling

Format: Liquid

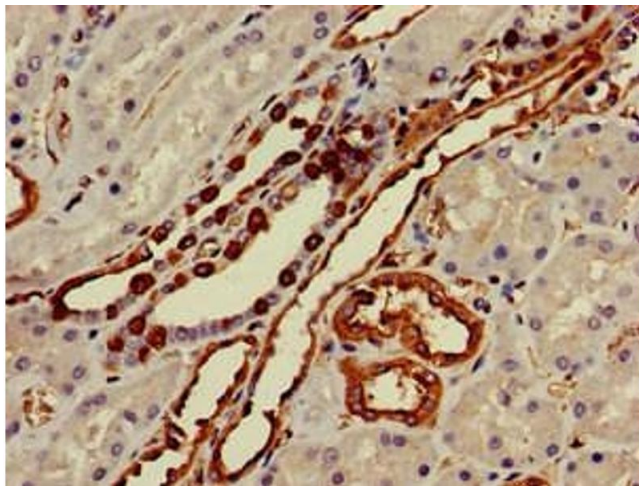
Buffer: Preservative: 0.03 % Proclin 300  
Constituents: 50 % Glycerol, 0.01M PBS, pH 7.4

Preservative: ProClin

Precaution of Use: This product contains ProClin: a POISONOUS AND HAZARDOUS SUBSTANCE which should be handled by trained staff only.

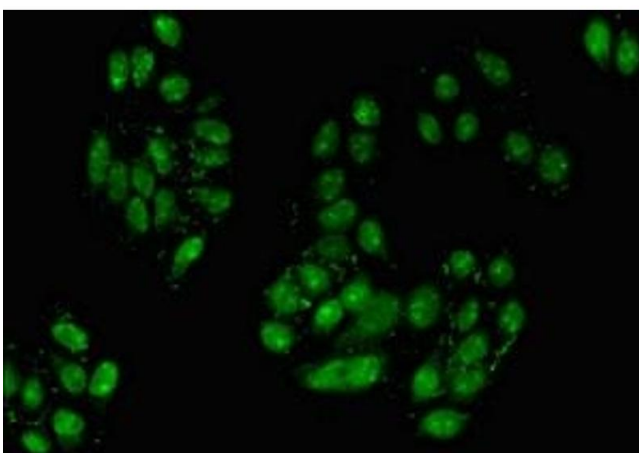
Storage: -20 °C,-80 °C

Storage Comment: Upon receipt, store at -20°C or -80°C. Avoid repeated freeze.



#### Immunohistochemistry

**Image 1.** Immunohistochemistry of paraffin-embedded human kidney tissue using ABIN7155856 at dilution of 1:100



#### Immunofluorescence

**Image 2.** Immunofluorescent analysis of HepG2 cells using ABIN7155856 at dilution of 1:100 and Alexa Fluor 488-conjugated AffiniPure Goat Anti-Rabbit IgG(H+L)