



[Go to Product page](#)

Datasheet for ABIN7155877
anti-HOMER1 antibody (AA 1-354)

1 Image

Overview

Quantity:	100 µg
Target:	HOMER1
Binding Specificity:	AA 1-354
Reactivity:	Human
Host:	Rabbit
Clonality:	Polyclonal
Conjugate:	This HOMER1 antibody is un-conjugated
Application:	ELISA, Immunohistochemistry (IHC)

Product Details

Immunogen:	Recombinant Human Homer protein homolog 1 protein (1-354AA)
Isotype:	IgG
Cross-Reactivity:	Human
Purification:	>95%, Protein G purified

Target Details

Target:	HOMER1
Alternative Name:	HOMER1 (HOMER1 Products)
Background:	Background: Postsynaptic density scaffolding protein. Binds and cross-links cytoplasmic regions of GRM1, GRM5, ITPR1, DNM3, RYR1, RYR2, SHANK1 and SHANK3. By physically

Target Details

linking GRM1 and GRM5 with ER-associated ITPR1 receptors, it aids the coupling of surface receptors to intracellular calcium release. May also couple GRM1 to PI3 kinase through its interaction with AGAP2. Isoform 1 regulates the trafficking and surface expression of GRM5. Isoform 3 acts as a natural dominant negative, in dynamic competition with constitutively expressed isoform 1 to regulate synaptic metabotropic glutamate function. Isoform 3, may be involved in the structural changes that occur at synapses during long-lasting neuronal plasticity and development. Forms a high-order complex with SHANK1, which in turn is necessary for the structural and functional integrity of dendritic spines (By similarity).

Aliases: HOME1_HUMAN antibody, Homer antibody, HOMER 1A antibody, HOMER 1B antibody, HOMER 1C antibody, Homer homolog 1 (Drosophila) antibody, homer homolog 1 antibody, Homer protein homolog 1 antibody, homer scaffolding protein 1 antibody, Homer, Drosophila, homolog of, 1 antibody, Homer, neuronal immediate early gene, 1 antibody, Homer-1 antibody, Homer1 antibody, HOMER1A antibody, HOMER1B antibody, HOMER1C antibody, SYN47 antibody, Ves 1 antibody

UniProt: [Q86YM7](#)

Pathways: [Skeletal Muscle Fiber Development](#)

Application Details

Application Notes: Recommended dilution: IHC:1:20-1:200,

Restrictions: For Research Use only

Handling

Format: Liquid

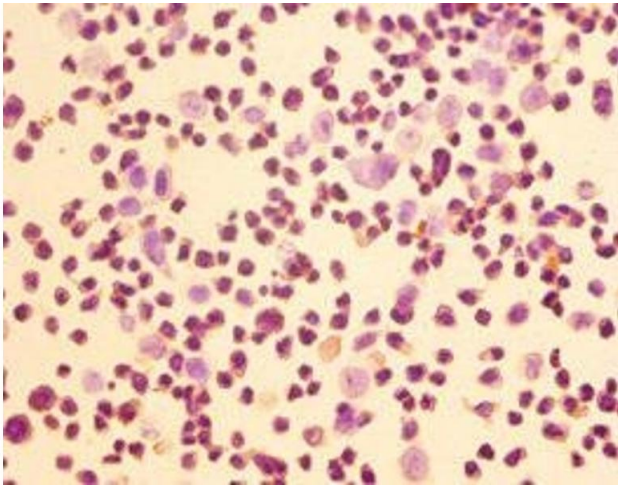
Buffer: Preservative: 0.03 % Proclin 300
Constituents: 50 % Glycerol, 0.01M PBS, PH 7.4

Preservative: ProClin

Precaution of Use: This product contains ProClin: a POISONOUS AND HAZARDOUS SUBSTANCE which should be handled by trained staff only.

Storage: -20 °C,-80 °C

Storage Comment: Upon receipt, store at -20°C or -80°C. Avoid repeated freeze.



Immunohistochemistry

Image 1. Immunohistochemistry of paraffin-embedded LO2 cells using ABIN7155877 at dilution of 1:50