

Datasheet for ABIN7155881
anti-HOMER2 antibody (AA 1-343)



[Go to Product page](#)

1 Image

Overview

Quantity:	100 µg
Target:	HOMER2
Binding Specificity:	AA 1-343
Reactivity:	Human
Host:	Rabbit
Clonality:	Polyclonal
Conjugate:	This HOMER2 antibody is un-conjugated
Application:	ELISA, Immunohistochemistry (IHC)

Product Details

Immunogen:	Recombinant Human Homer protein homolog 2 protein (1-343AA)
Isotype:	IgG
Cross-Reactivity:	Human
Purification:	>95%, Protein G purified

Target Details

Target:	HOMER2
Alternative Name:	HOMER2 (HOMER2 Products)
Background:	Background: Postsynaptic density scaffolding protein. Binds and cross-links cytoplasmic regions of GRM1, GRM5, ITPR1, DNM3, RYR1, RYR2, SHANK1 and SHANK3. By physically

Target Details

linking GRM1 and GRM5 with ER-associated ITPR1 receptors, it aids the coupling of surface receptors to intracellular calcium release. May also couple GRM1 to PI3 kinase through its interaction with AGAP2. Isoforms can be differently regulated and may play an important role in maintaining the plasticity at glutamatergic synapses.

Aliases: HOMER2 antibody, Homer protein homolog 2 antibody, Homer-2 antibody, Cupidin antibody

UniProt: [Q9NSB8](#)

Pathways: [Synaptic Membrane](#), [Regulation of G-Protein Coupled Receptor Protein Signaling](#)

Application Details

Application Notes: Recommended dilution: IHC:1:20-1:200,

Restrictions: For Research Use only

Handling

Format: Liquid

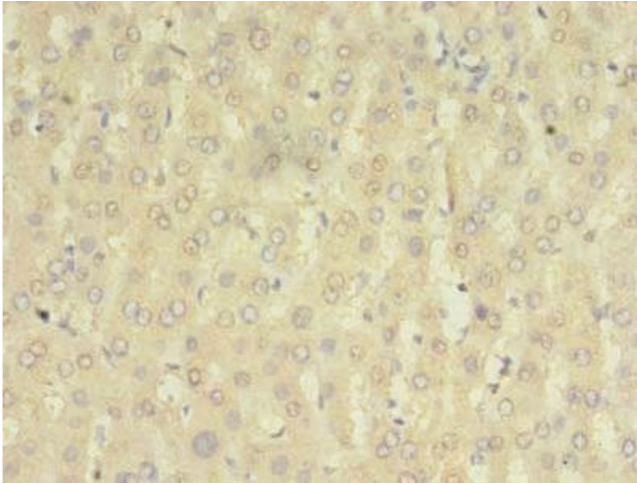
Buffer: Preservative: 0.03 % Proclin 300
Constituents: 50 % Glycerol, 0.01M PBS, PH 7.4

Preservative: ProClin

Precaution of Use: This product contains ProClin: a POISONOUS AND HAZARDOUS SUBSTANCE which should be handled by trained staff only.

Storage: -20 °C,-80 °C

Storage Comment: Upon receipt, store at -20°C or -80°C. Avoid repeated freeze.



Immunohistochemistry

Image 1. Immunohistochemistry of paraffin-embedded human liver tissue using ABIN7155881 at dilution of 1:100