

Datasheet for ABIN7155909
anti-HCFC1 antibody (AA 201-428)

2 Images

[Go to Product page](#)

Overview

Quantity:	100 µg
Target:	HCFC1
Binding Specificity:	AA 201-428
Reactivity:	Human
Host:	Rabbit
Clonality:	Polyclonal
Conjugate:	This HCFC1 antibody is un-conjugated
Application:	Immunohistochemistry (IHC), ELISA, Immunofluorescence (IF)

Product Details

Immunogen:	Recombinant Human Host cell factor 1 protein (201-428AA)
Isotype:	IgG
Cross-Reactivity:	Human
Purification:	>95%, Protein G purified

Target Details

Target:	HCFC1
Alternative Name:	HCFC1 (HCFC1 Products)
Background:	Background: Involved in control of the cell cycle. Also antagonizes transactivation by ZBTB17 and GABP2, represses ZBTB17 activation of the p15(INK4b) promoter and inhibits its ability to

Target Details

recruit p300. Coactivator for EGR2 and GABP2. Tethers the chromatin modifying Set1/Ash2 histone H3 'Lys-4' methyltransferase (H3K4me) and Sin3 histone deacetylase (HDAC) complexes (involved in the activation and repression of transcription, respectively) together. Component of a THAP1/THAP3-HCFC1-OGT complex that is required for the regulation of the transcriptional activity of RRM1. As part of the NSL complex it may be involved in acetylation of nucleosomal histone H4 on several lysine residues. In case of human herpes simplex virus (HSV) infection, HCFC1 forms a multiprotein-DNA complex with the viral transactivator protein VP16 and POU2F1 thereby enabling the transcription of the viral immediate early genes. Aliases: C1 factor antibody, CFF antibody, HCF 1 antibody, HCF antibody, HCF C-terminal chain 6 antibody, HCF-1 antibody, HCF1 antibody, Hcfc1 antibody, HCFC1_HUMAN antibody, HFC1 antibody, Host cell factor 1 antibody, Host cell factor antibody, Host cell factor C1 (VP16 accessory protein) antibody, Host cell factor C1 antibody, MGC70925 antibody, MRX3 antibody, VCAF antibody, VP16 accessory protein antibody

UniProt: [P51610](#)

Application Details

Application Notes: Recommended dilution: IHC:1:20-1:200, IF:1:50-1:200,

Restrictions: For Research Use only

Handling

Format: Liquid

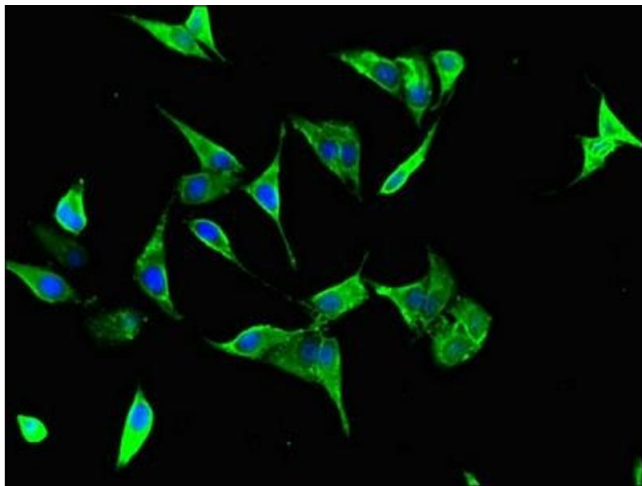
Buffer: Preservative: 0.03 % Proclin 300
Constituents: 50 % Glycerol, 0.01M PBS, PH 7.4

Preservative: ProClin

Precaution of Use: This product contains ProClin: a POISONOUS AND HAZARDOUS SUBSTANCE which should be handled by trained staff only.

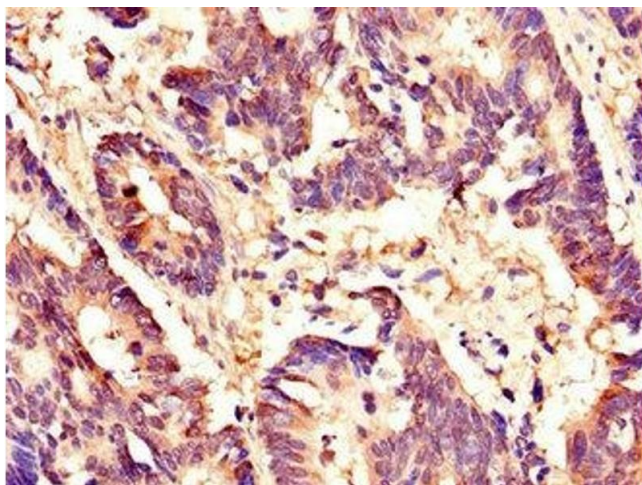
Storage: -20 °C,-80 °C

Storage Comment: Upon receipt, store at -20°C or -80°C. Avoid repeated freeze.



Immunofluorescence

Image 1. Immunofluorescent analysis of HeLa cells using ABIN7155909 at dilution of 1:100 and Alexa Fluor 488-conjugated AffiniPure Goat Anti-Rabbit IgG(H+L)



Immunohistochemistry

Image 2. Immunohistochemistry of paraffin-embedded human colon cancer using ABIN7155909 at dilution of 1:100