

Datasheet for ABIN7155952
anti-HAS1 antibody (AA 151-271)[Go to Product page](#)

1 Image

Overview

Quantity:	100 µg
Target:	HAS1
Binding Specificity:	AA 151-271
Reactivity:	Human
Host:	Rabbit
Clonality:	Polyclonal
Conjugate:	This HAS1 antibody is un-conjugated
Application:	ELISA, Immunofluorescence (IF)

Product Details

Immunogen:	Recombinant Human Hyaluronan synthase 1 protein (151-271AA)
Isotype:	IgG
Cross-Reactivity:	Human
Purification:	>95%, Protein G purified

Target Details

Target:	HAS1
Alternative Name:	HAS1 (HAS1 Products)
Background:	Background: Catalyzes the addition of GlcNAc or GlcUA monosaccharides to the nascent hyaluronan polymer. Therefore, it is essential to hyaluronan synthesis a major component of

Target Details

most extracellular matrices that has a structural role in tissues architectures and regulates cell adhesion, migration and differentiation. This is one of the isozymes catalyzing that reaction. Also able to catalyze the synthesis of chito-oligosaccharide depending on the substrate (By similarity).

Aliases: HA synthase 1 antibody, HAS antibody, HAS1 antibody, HuHAS1 antibody, Hyaluronan synthase 1 antibody, Hyaluronate synthase 1 antibody, Hyaluronic acid synthase 1 antibody, HYAS1_HUMAN antibody

UniProt: [Q92839](#)

Pathways: [Glycosaminoglycan Metabolic Process](#)

Application Details

Application Notes: Recommended dilution: IF:1:50-1:200,

Restrictions: For Research Use only

Handling

Format: Liquid

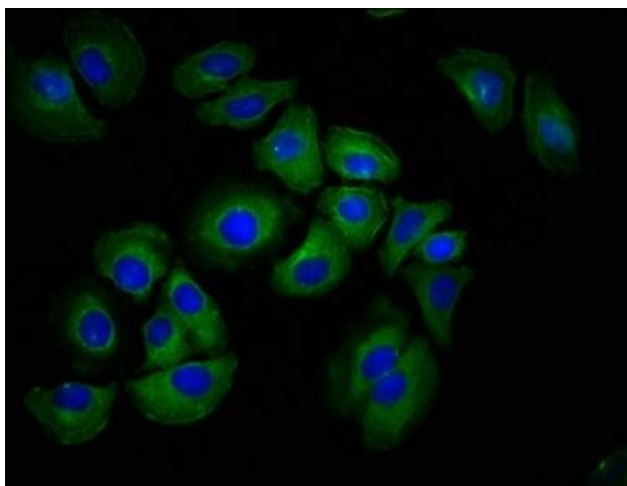
Buffer: Preservative: 0.03 % Proclin 300
Constituents: 50 % Glycerol, 0.01M PBS, pH 7.4

Preservative: ProClin

Precaution of Use: This product contains ProClin: a POISONOUS AND HAZARDOUS SUBSTANCE which should be handled by trained staff only.

Storage: -20 °C,-80 °C

Storage Comment: Upon receipt, store at -20°C or -80°C. Avoid repeated freeze.



Immunofluorescence

Image 1. Immunofluorescence staining of A549 cells with ABIN7155952 at 1:100, counter-stained with DAPI. The cells were fixed in 4% formaldehyde, permeabilized using 0.2% Triton X-100 and blocked in 10% normal Goat Serum. The cells were then incubated with the antibody overnight at 4°C. The secondary antibody was Alexa Fluor 488-conjugated AffiniPure Goat Anti-Rabbit IgG(H+L).