

Datasheet for ABIN7156000
anti-HMGCS1 antibody (AA 360-520)[Go to Product page](#)

3 Images

Overview

Quantity:	100 µg
Target:	HMGCS1
Binding Specificity:	AA 360-520
Reactivity:	Human
Host:	Rabbit
Clonality:	Polyclonal
Conjugate:	This HMGCS1 antibody is un-conjugated
Application:	ELISA, Immunohistochemistry (IHC), Immunofluorescence (IF)

Product Details

Immunogen:	Recombinant Human Hydroxymethylglutaryl-CoA synthase, cytoplasmic protein (360-520AA)
Isotype:	IgG
Cross-Reactivity:	Human
Purification:	>95%, Protein G purified

Target Details

Target:	HMGCS1
Alternative Name:	HMGCS1 (HMGCS1 Products)
Background:	Background: This enzyme condenses acetyl-CoA with acetoacetyl-CoA to form HMG-CoA, which is the substrate for HMG-CoA reductase.

Target Details

Aliases: 3 hydroxy 3 methylglutaryl Coenzyme A synthase 1 (soluble) antibody, 3-hydroxy-3-methylglutaryl coenzyme A synthase antibody, cytoplasmic antibody, EC 2.3.3.10 antibody, HMCS1_HUMAN antibody, HMG CoA synthase antibody, HMG-CoA synthase antibody, HMGCS antibody, HMGCS1 antibody, Hydroxymethylglutaryl CoA synthase, cytoplasmic antibody, Hydroxymethylglutaryl-CoA synthase antibody, MGC90332 antibody

UniProt: [Q01581](#)

Pathways: [Regulation of Lipid Metabolism by PPARalpha](#)

Application Details

Application Notes: Recommended dilution: IHC:1:500-1:1000, IF:1:50-1:200,

Restrictions: For Research Use only

Handling

Format: Liquid

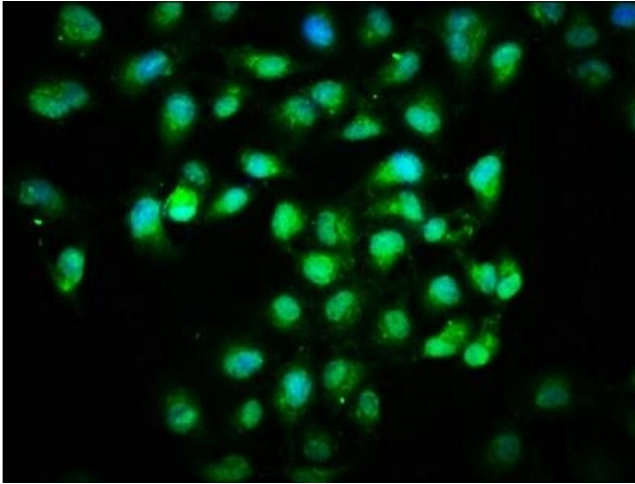
Buffer: Preservative: 0.03 % Proclin 300
Constituents: 50 % Glycerol, 0.01M PBS, pH 7.4

Preservative: ProClin

Precaution of Use: This product contains ProClin: a POISONOUS AND HAZARDOUS SUBSTANCE which should be handled by trained staff only.

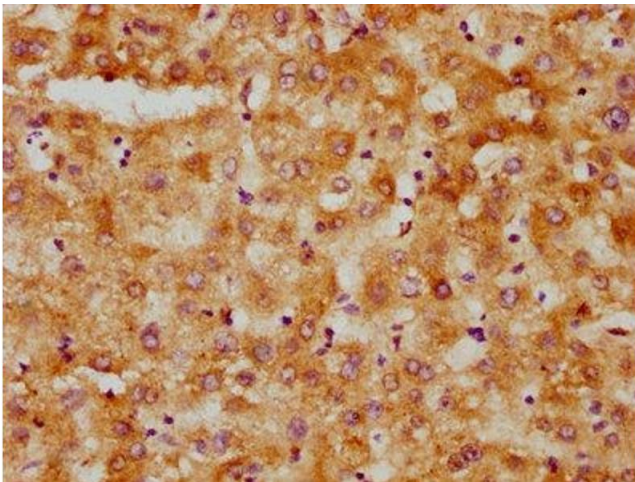
Storage: -20 °C, -80 °C

Storage Comment: Upon receipt, store at -20°C or -80°C. Avoid repeated freeze.



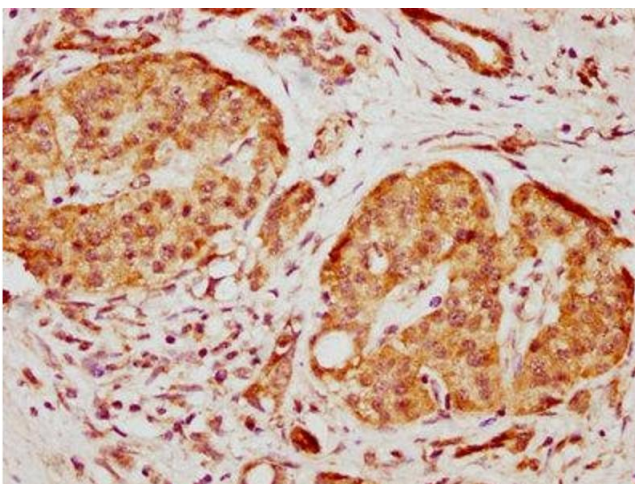
Immunofluorescence

Image 1. Immunofluorescence staining of HeLa cells with ABIN7156000 at 1:166, counter-stained with DAPI. The cells were fixed in 4% formaldehyde, permeabilized using 0.2% Triton X-100 and blocked in 10% normal Goat Serum. The cells were then incubated with the antibody overnight at 4°C. The secondary antibody was Alexa Fluor 488-conjugated AffiniPure Goat Anti-Rabbit IgG(H+L).



Immunohistochemistry

Image 2. IHC image of ABIN7156000 diluted at 1:500 and staining in paraffin-embedded human liver tissue performed on a Leica Bond™ system. After dewaxing and hydration, antigen retrieval was mediated by high pressure in a citrate buffer (pH 6.0). Section was blocked with 10% normal goat serum 30min at RT. Then primary antibody (1% BSA) was incubated at 4°C overnight. The primary is detected by a biotinylated secondary antibody and visualized using an HRP conjugated SP system.



Immunohistochemistry

Image 3. IHC image of ABIN7156000 diluted at 1:500 and staining in paraffin-embedded human pancreatic cancer performed on a Leica Bond™ system. After dewaxing and hydration, antigen retrieval was mediated by high pressure in a citrate buffer (pH 6.0). Section was blocked with 10% normal goat serum 30min at RT. Then primary antibody (1% BSA) was incubated at 4°C overnight. The primary is detected by a biotinylated secondary antibody and visualized using an HRP conjugated SP system.