

Datasheet for ABIN7156042  
**anti-IGFBP1 antibody**



[Go to Product page](#)

1 Image

## Overview

Quantity:	100 µg
Target:	IGFBP1
Reactivity:	Human
Host:	Mouse
Clonality:	Monoclonal
Conjugate:	This IGFBP1 antibody is un-conjugated
Application:	Western Blotting (WB), ELISA

## Product Details

Immunogen:	Recombinant Human IGFBP1 Protein
Clone:	1E1B2
Isotype:	IgG1, IgG1 kappa
Cross-Reactivity:	Human, Mouse
Purification:	Protein G purified

## Target Details

Target:	IGFBP1
Alternative Name:	IGFBP1 ( <a href="#">IGFBP1 Products</a> )
Background:	Background: This gene is a member of the Insulin-like growth factor-binding protein (IGFBP) family and encodes a protein with an IGFBP domain and a type-I thyroglobulin domain. The

## Target Details

protein binds both insulin-like growth factors (IGFs) I and II and circulates in the plasma. Binding of this protein prolongs the half-life of the IGFs and alters their interaction with cell surface receptors. Alternate transcriptional splice variants, encoding different isoforms, have been characterized.

Aliases: IGFBP1,Insulin-like growth factor-binding protein 1,IGF-binding protein 1

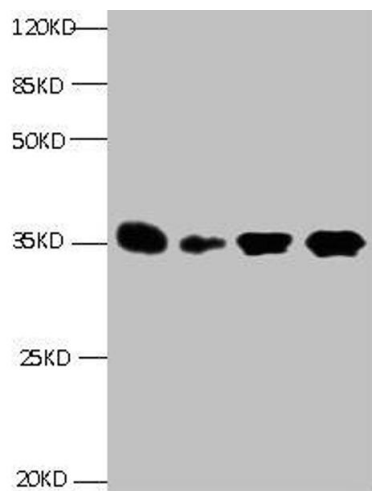
UniProt:	<a href="#">P08833</a>
Pathways:	<a href="#">Myometrial Relaxation and Contraction</a> , <a href="#">ER-Nucleus Signaling</a> , <a href="#">Growth Factor Binding</a>

## Application Details

Application Notes:	Recommended dilution:WB:1:500-1:5000,
Restrictions:	For Research Use only

## Handling

Format:	Liquid
Buffer:	Preservative: 15mmol/L Sodium azide Constituents: 0.1Mol/L NaCl
Preservative:	Sodium azide
Precaution of Use:	This product contains Sodium azide: a POISONOUS AND HAZARDOUS SUBSTANCE which should be handled by trained staff only.
Storage:	-20 °C,-80 °C
Storage Comment:	Upon receipt, store at -20°C or -80°C. Avoid repeated freeze.



Western Blotting

**Image 1.** All lanes: Mouse anti- Human Insulin-like growth factor-binding protein 1 monoclonal antibody at 1 µg/mL  
Lane 1:Pyrolysis liquid human placental tissue 7.5 µg/mL  
Lane 2:Pyrolysis liquid human placental tissue 3.25 µg/mL  
Lane 3:IGFBP1 transfected SF9 cell lysate Lane 4:human amniotic fluid  
Secondary Goat polyclonal to Mouse IgG at 1/5000 dilution Predicted band size : 28kd Observed band size : 35kd