

Datasheet for ABIN7156122  
**anti-KPNA4 antibody (AA 51-239)**[Go to Product page](#)

## 4 Images

## Overview

Quantity:	100 µg
Target:	KPNA4
Binding Specificity:	AA 51-239
Reactivity:	Human
Host:	Rabbit
Clonality:	Polyclonal
Conjugate:	This KPNA4 antibody is un-conjugated
Application:	Western Blotting (WB), ELISA, Immunohistochemistry (IHC), Immunofluorescence (IF)

## Product Details

Immunogen:	Recombinant Human Importin subunit alpha-3 protein (51-239AA)
Isotype:	IgG
Cross-Reactivity:	Human, Mouse
Purification:	>95%, Protein G purified

## Target Details

Target:	KPNA4
Alternative Name:	KPNA4 ( <a href="#">KPNA4 Products</a> )
Background:	Background: Functions in nuclear protein import as an adapter protein for nuclear receptor KPNB1. Binds specifically and directly to substrates containing either a simple or bipartite NLS

## Target Details

motif. Docking of the importin/substrate complex to the nuclear pore complex (NPC) is mediated by KPNB1 through binding to nucleoporin FxFG repeats and the complex is subsequently translocated through the pore by an energy requiring, Ran-dependent mechanism. At the nucleoplasmic side of the NPC, Ran binds to importin-beta and the three components separate and importin-alpha and -beta are re-exported from the nucleus to the cytoplasm where GTP hydrolysis releases Ran from importin. The directionality of nuclear import is thought to be conferred by an asymmetric distribution of the GTP- and GDP-bound forms of Ran between the cytoplasm and nucleus. In vitro, mediates the nuclear import of human cytomegalovirus UL84 by recognizing a non-classical NLS. In vitro, mediates the nuclear import of human cytomegalovirus UL84 by recognizing a non-classical NLS.

Aliases: FLJ31113 antibody, IMA3\_HUMAN antibody, Importin alpha 3 antibody, Importin alpha 4 subunit antibody, Importin alpha Q1 antibody, Importin subunit alpha 3 antibody, Importin subunit alpha-3 antibody, IPO A3 antibody, IPOA 3 antibody, IPOA3 antibody, Karyopherin alpha 4 (importin alpha 3) antibody, Karyopherin alpha 4 antibody, Karyopherin alpha 4 importin alpha 3 antibody, Karyopherin alpha 4 subunit antibody, Karyopherin subunit alpha 4 antibody, Karyopherin subunit alpha-4 antibody, KPNA 4 antibody, Kpna4 antibody, MGC12217 antibody, MGC26703 antibody, OTTHUMP00000213880 antibody, QIP 1 antibody, Qip1 antibody, Qip1 protein antibody, SRP 3 antibody, SRP3 antibody

UniProt: [O00629](#)

Pathways: [Protein targeting to Nucleus](#)

## Application Details

Application Notes: Recommended dilution: WB:1:500-1:5000, IHC:1:20-1:200, IF:1:50-1:200,

Restrictions: For Research Use only

## Handling

Format: Liquid

Buffer: Preservative: 0.03 % Proclin 300  
Constituents: 50 % Glycerol, 0.01M PBS, PH 7.4

Preservative: ProClin

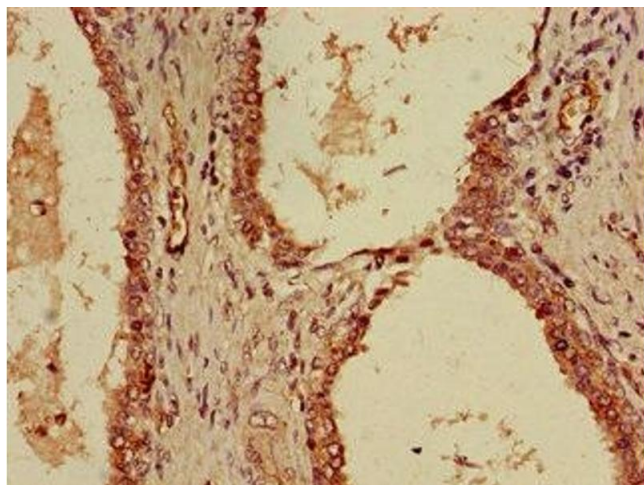
Precaution of Use: This product contains ProClin: a POISONOUS AND HAZARDOUS SUBSTANCE which should be handled by trained staff only.

## Handling

Storage: -20 °C, -80 °C

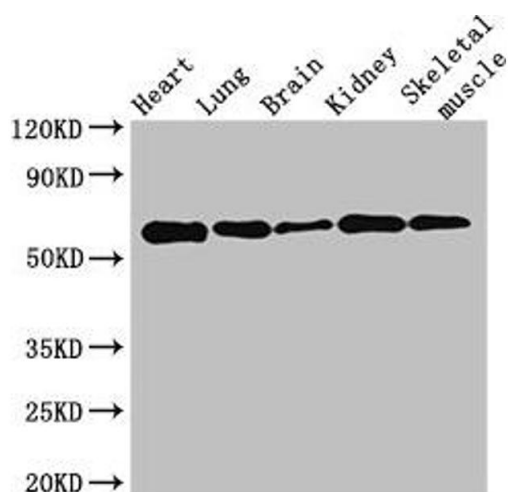
Storage Comment: Upon receipt, store at -20°C or -80°C. Avoid repeated freeze.

## Images



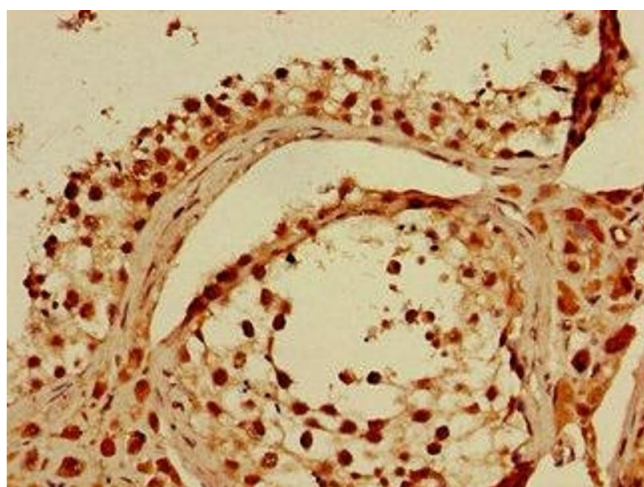
### Immunohistochemistry

**Image 1.** Immunohistochemistry of paraffin-embedded human prostate cancer using ABIN7156122 at dilution of 1:100



### Western Blotting

**Image 2.** Western Blot Positive WB detected in: Mouse heart tissue, Mouse lung tissue, Mouse brain tissue, Mouse kidney tissue, Mouse skeletal muscle tissue. All lanes: KPNA4 antibody at 3.5 µg/mL. Secondary Goat polyclonal to rabbit IgG at 1/50000 dilution. Predicted band size: 58 kDa. Observed band size: 58 kDa.



### Immunohistochemistry

**Image 3.** Immunohistochemistry of paraffin-embedded human testis tissue using ABIN7156122 at dilution of 1:100

Please check the [product details page](#) for more images. Overall 4 images are available for ABIN7156122.