

Datasheet for ABIN7156130
anti-KPNA5 antibody (AA 1-240)[Go to Product page](#)

2 Images

Overview

Quantity:	100 µL
Target:	KPNA5
Binding Specificity:	AA 1-240
Reactivity:	Human
Host:	Rabbit
Clonality:	Polyclonal
Conjugate:	This KPNA5 antibody is un-conjugated
Application:	Western Blotting (WB), ELISA, Immunohistochemistry (IHC)

Product Details

Immunogen:	Recombinant Human Importin subunit alpha-6 protein (1-240AA)
Isotype:	IgG
Cross-Reactivity:	Human, Mouse
Purification:	Antigen Affinity Purified

Target Details

Target:	KPNA5
Alternative Name:	KPNA5 (KPNA5 Products)
Background:	Background: Functions in nuclear protein import as an adapter protein for nuclear receptor KPNB1. Binds specifically and directly to substrates containing either a simple or bipartite NLS

Target Details

motif. Docking of the importin/substrate complex to the nuclear pore complex (NPC) is mediated by KPNB1 through binding to nucleoporin FxFG repeats and the complex is subsequently translocated through the pore by an energy requiring, Ran-dependent mechanism. At the nucleoplasmic side of the NPC, Ran binds to importin-beta and the three components separate and importin-alpha and -beta are re-exported from the nucleus to the cytoplasm where GTP hydrolysis releases Ran from importin. The directionality of nuclear import is thought to be conferred by an asymmetric distribution of the GTP- and GDP-bound forms of Ran between the cytoplasm and nucleus. Mediates nuclear import of STAT1 homodimers and STAT1/STAT2 heterodimers by recognizing non-classical NLSs of STAT1 and STAT2 through ARM repeats 8-9. Recognizes influenza A virus nucleoprotein through ARM repeat 7-9 In vitro, mediates the nuclear import of human cytomegalovirus UL84 by recognizing a non-classical NLS.

Aliases: IMA5_HUMAN antibody, Importin alpha 6 antibody, Importin subunit alpha 6 antibody, Importin subunit alpha-6 antibody, IPOA 6 antibody, IPOA6 antibody, Karyopherin alpha 5 antibody, Karyopherin alpha 5 importin alpha 6 antibody, Karyopherin subunit alpha 5 antibody, Karyopherin subunit alpha-5 antibody, KPNA 5 antibody, KPNA5 antibody, SRP 6 antibody, SRP6 antibody

UniProt: [O15131](#)

Pathways: [Protein targeting to Nucleus](#)

Application Details

Application Notes: Recommended dilution: WB:1:1000-1:5000, IHC:1:20-1:200,

Restrictions: For Research Use only

Handling

Format: Liquid

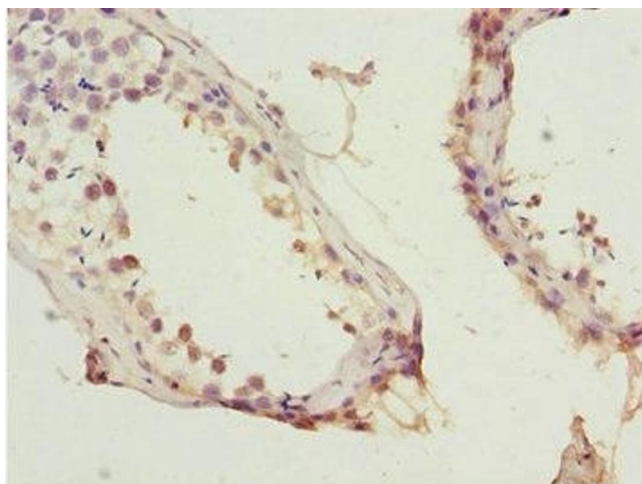
Buffer: PBS with 0.02 % sodium azide, 50 % glycerol, pH 7.3.

Preservative: Sodium azide

Precaution of Use: This product contains Sodium azide: a POISONOUS AND HAZARDOUS SUBSTANCE which should be handled by trained staff only.

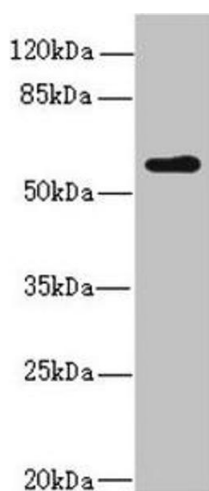
Storage: -20 °C,-80 °C

Storage Comment: Upon receipt, store at -20°C or -80°C. Avoid repeated freeze.



Immunohistochemistry

Image 1. Immunohistochemistry of paraffin-embedded human testis tissue using ABIN7156130 at dilution of 1:100



Western Blotting

Image 2. Western blot All lanes: KPNA5 antibody at 2.04 μ g/mL + Mouse liver tissue Secondary Goat polyclonal to rabbit IgG at 1/10000 dilution Predicted band size: 60 kDa
Observed band size: 60 kDa