

Datasheet for ABIN7156132
anti-KPNA6 antibody (AA 277-536)

3 Images

[Go to Product page](#)

Overview

Quantity:	100 µL
Target:	KPNA6
Binding Specificity:	AA 277-536
Reactivity:	Human
Host:	Rabbit
Clonality:	Polyclonal
Conjugate:	This KPNA6 antibody is un-conjugated
Application:	Western Blotting (WB), Immunohistochemistry (IHC), ELISA

Product Details

Immunogen:	Recombinant Human Importin subunit alpha-7 protein (277-536AA)
Isotype:	IgG
Cross-Reactivity:	Human, Mouse
Purification:	Antigen Affinity Purified

Target Details

Target:	KPNA6
Alternative Name:	KPNA6 (KPNA6 Products)
Background:	Background: Functions in nuclear protein import as an adapter protein for nuclear receptor KPNB1. Binds specifically and directly to substrates containing either a simple or bipartite NLS

Target Details

motif. Docking of the importin/substrate complex to the nuclear pore complex (NPC) is mediated by KPNB1 through binding to nucleoporin FxFG repeats and the complex is subsequently translocated through the pore by an energy requiring, Ran-dependent mechanism. At the nucleoplasmic side of the NPC, Ran binds to importin-beta and the three components separate and importin-alpha and -beta are re-exported from the nucleus to the cytoplasm where GTP hydrolysis releases Ran from importin. The directionality of nuclear import is thought to be conferred by an asymmetric distribution of the GTP- and GDP-bound forms of Ran between the cytoplasm and nucleus.

Aliases: FLJ11249 antibody, IMA7_HUMAN antibody, Importin alpha 7 subunit antibody, Importin alpha S2 antibody, Importin subunit alpha 7 antibody, Importin subunit alpha-7 antibody, IPOA 7 antibody, IPOA7 antibody, Karyopherin alpha 6 antibody, Karyopherin alpha 6 (importin alpha 7) antibody, Karyopherin subunit alpha 6 antibody, Karyopherin subunit alpha-6 antibody, KPNA 6 antibody, KPNA 7 antibody, Kpna6 antibody, KPNA7 antibody, MGC17918 antibody, OTTHUMP00000004532 antibody

UniProt: [O60684](#)

Pathways: [Protein targeting to Nucleus](#)

Application Details

Application Notes: Recommended dilution: WB:1:1000-1:5000, IHC:1:20-1:200,

Restrictions: For Research Use only

Handling

Format: Liquid

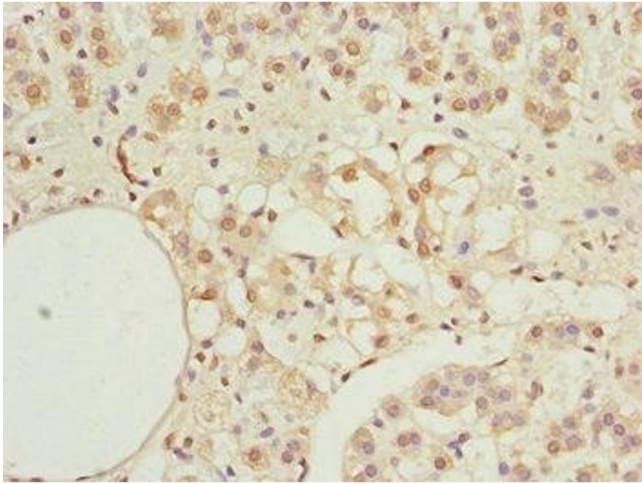
Buffer: PBS with 0.02 % sodium azide, 50 % glycerol, pH 7.3.

Preservative: Sodium azide

Precaution of Use: This product contains Sodium azide: a POISONOUS AND HAZARDOUS SUBSTANCE which should be handled by trained staff only.

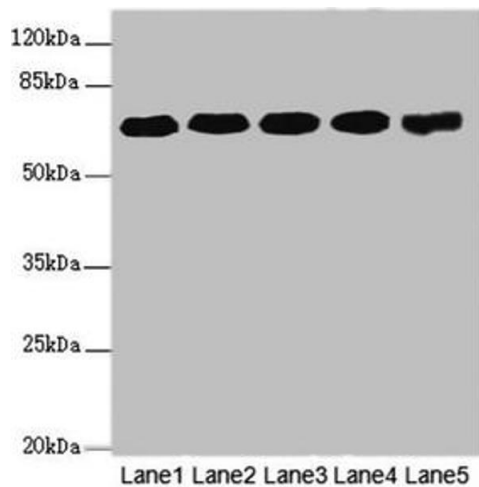
Storage: -20 °C,-80 °C

Storage Comment: Upon receipt, store at -20°C or -80°C. Avoid repeated freeze.



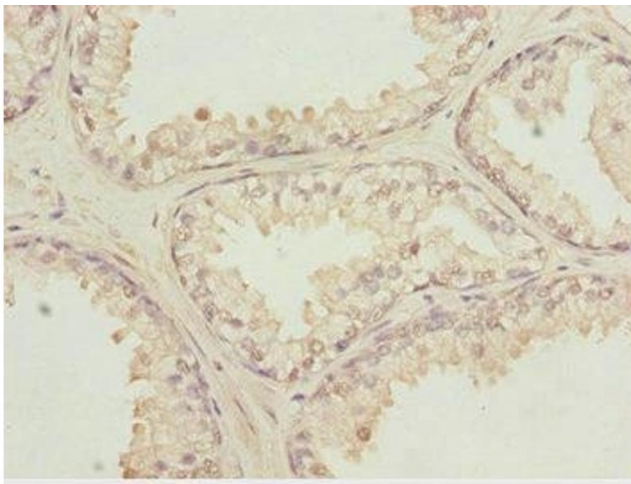
Immunohistochemistry

Image 1. Immunohistochemistry of paraffin-embedded human adrenal gland tissue using ABIN7156132 at dilution of 1:100



Western Blotting

Image 2. Western blot All lanes: KPNA6 antibody at 4.25 μ g/mL Lane 1: PC-3 whole cell lysate Lane 2: Hela whole cell lysate Lane 3: U251 whole cell lysate Lane 4: 293T whole cell lysate Lane 5: Mouse brain tissue Secondary Goat polyclonal to rabbit IgG at 1/10000 dilution Predicted band size: 60 kDa Observed band size: 60 kDa



Immunohistochemistry

Image 3. Immunohistochemistry of paraffin-embedded human prostate cancer using ABIN7156132 at dilution of 1:100