

Datasheet for ABIN7156142
anti-IPO13 antibody (AA 501-700)

3 Images

[Go to Product page](#)

Overview

Quantity:	100 µg
Target:	IPO13
Binding Specificity:	AA 501-700
Reactivity:	Human
Host:	Rabbit
Clonality:	Polyclonal
Conjugate:	This IPO13 antibody is un-conjugated
Application:	ELISA, Western Blotting (WB), Immunohistochemistry (IHC), Immunofluorescence (IF)

Product Details

Immunogen:	Recombinant Human Importin-13 protein (501-700AA)
Isotype:	IgG
Cross-Reactivity:	Human
Purification:	>95%, Protein G purified

Target Details

Target:	IPO13
Alternative Name:	IPO13 (IPO13 Products)
Background:	Background: Functions in nuclear protein import as nuclear transport receptor. Serves as receptor for nuclear localization signals (NLS) in cargo substrates. Is thought to mediate

Target Details

docking of the importin/substrate complex to the nuclear pore complex (NPC) through binding to nucleoporin and the complex is subsequently translocated through the pore by an energy requiring, Ran-dependent mechanism. At the nucleoplasmic side of the NPC, Ran binds to the importin, the importin/substrate complex dissociates and importin is re-exported from the nucleus to the cytoplasm where GTP hydrolysis releases Ran. The directionality of nuclear import is thought to be conferred by an asymmetric distribution of the GTP- and GDP-bound forms of Ran between the cytoplasm and nucleus. Mediates the nuclear import of UBC9, the RBM8A/MAGOH complex, PAX6 and probably other members of the paired homeobox family. Also mediates nuclear export of eIF-1A, and the cytoplasmic release of eIF-1A is triggered by the loading of import substrates onto IPO13.

Aliases: Imp 13 antibody, Imp13 antibody, Importin-13 antibody, Importin13 antibody, IPO 13 antibody, Ipo13 antibody, IPO13_HUMAN antibody, Kap 13 antibody, Kap13 antibody, Karyopherin 13 antibody, Karyopherin-13 antibody, Karyopherin13 antibody, KIAA0274 antibody, Late gestation lung 2 antibody, Late gestation lung 2 protein antibody, Lgl2 antibody, Ran binding protein 13 antibody, Ran-binding protein 13 antibody, RanBP 13 antibody, RanBP13 antibody

UniProt: [O94829](#)

Pathways: [Intracellular Steroid Hormone Receptor Signaling Pathway](#), [Nuclear Hormone Receptor Binding](#), [Protein targeting to Nucleus](#)

Application Details

Application Notes: Recommended dilution: WB:1:500-1:5000, IHC:1:20-1:200, IF:1:50-1:200,

Restrictions: For Research Use only

Handling

Format: Liquid

Buffer: Preservative: 0.03 % Proclin 300
Constituents: 50 % Glycerol, 0.01M PBS, PH 7.4

Preservative: ProClin

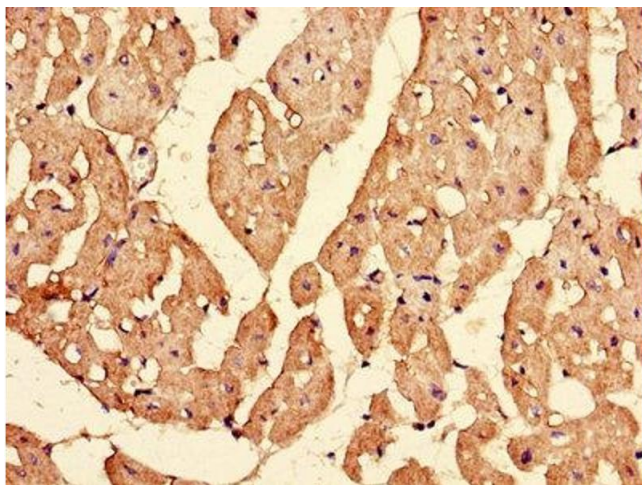
Precaution of Use: This product contains ProClin: a POISONOUS AND HAZARDOUS SUBSTANCE which should be handled by trained staff only.

Storage: -20 °C,-80 °C

Handling

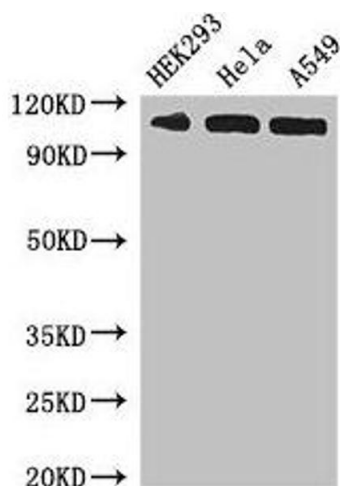
Storage Comment: Upon receipt, store at -20°C or -80°C. Avoid repeated freeze.

Images



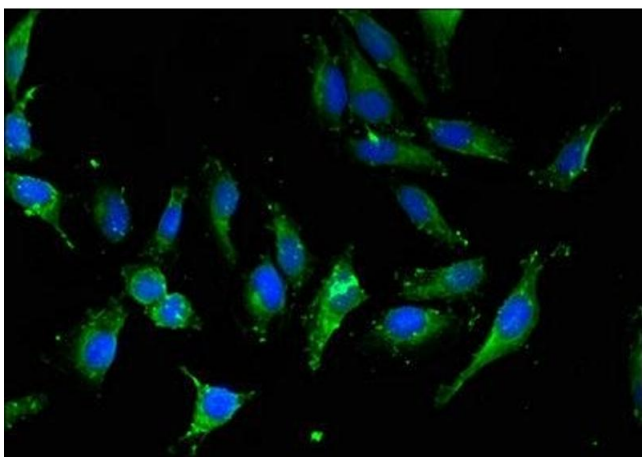
Immunohistochemistry

Image 1. Immunohistochemistry of paraffin-embedded human heart tissue using ABIN7156142 at dilution of 1:100



Western Blotting

Image 2. Western Blot Positive WB detected in: HEK293 whole cell lysate, HeLa whole cell lysate, A549 whole cell lysate All lanes: IPO13 antibody at 3 µg/mL Secondary Goat polyclonal to rabbit IgG at 1/50000 dilution Predicted band size: 109 kDa Observed band size: 109 kDa



Immunofluorescence

Image 3. Immunofluorescent analysis of HeLa cells using ABIN7156142 at dilution of 1:100 and Alexa Fluor 488-conjugated AffiniPure Goat Anti-Rabbit IgG(H+L)