



[Go to Product page](#)

Datasheet for ABIN7156203

anti-Indian Hedgehog antibody (AA 203-411)

4 Images

Overview

Quantity:	100 µg
Target:	Indian Hedgehog (IHH)
Binding Specificity:	AA 203-411
Reactivity:	Human
Host:	Rabbit
Clonality:	Polyclonal
Conjugate:	This Indian Hedgehog antibody is un-conjugated
Application:	ELISA, Immunohistochemistry (IHC), Immunofluorescence (IF)

Product Details

Immunogen:	Recombinant Human Indian hedgehog protein (203-411AA)
Isotype:	IgG
Cross-Reactivity:	Human
Purification:	>95%, Protein G purified

Target Details

Target:	Indian Hedgehog (IHH)
Alternative Name:	IHH (IHH Products)
Background:	Background: Intercellular signal essential for a variety of patterning events during development. Binds to the patched (PTC) receptor, which functions in association with smoothened (SMO), to

Target Details

activate the transcription of target genes. Implicated in endochondral ossification: may regulate the balance between growth and ossification of the developing bones. Induces the expression of parathyroid hormone-related protein (PTHrP)

Aliases: BDA1 antibody, HHG-2 antibody, HHG2 antibody, IHH antibody, IHH_HUMAN antibody, Indian Hedgehog antibody, Indian hedgehog homolog antibody, Indian hedgehog protein antibody, Indian hedgehog protein C-product antibody, Indian hedgehog protein N-product antibody

UniProt: [Q14623](#)

Pathways: [Hedgehog Signaling](#)

Application Details

Application Notes: Recommended dilution: IHC:1:100-1:1000, IF:1:50-1:200,

Restrictions: For Research Use only

Handling

Format: Liquid

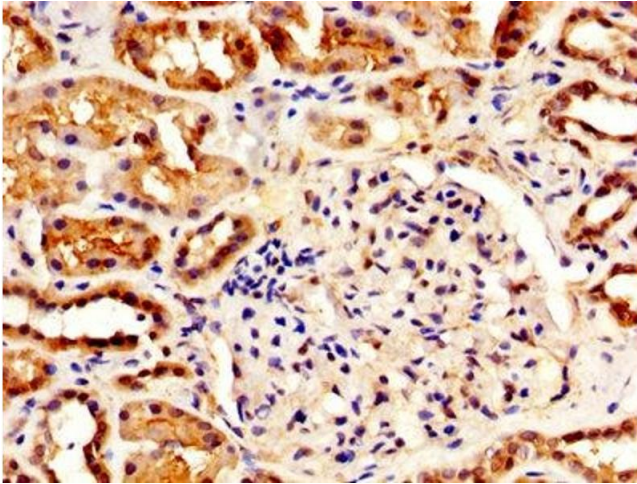
Buffer: Preservative: 0.03 % Proclin 300
Constituents: 50 % Glycerol, 0.01M PBS, PH 7.4

Preservative: ProClin

Precaution of Use: This product contains ProClin: a POISONOUS AND HAZARDOUS SUBSTANCE which should be handled by trained staff only.

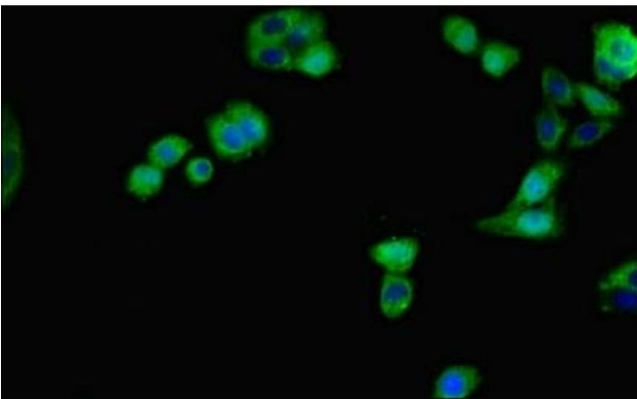
Storage: -20 °C,-80 °C

Storage Comment: Upon receipt, store at -20°C or -80°C. Avoid repeated freeze.



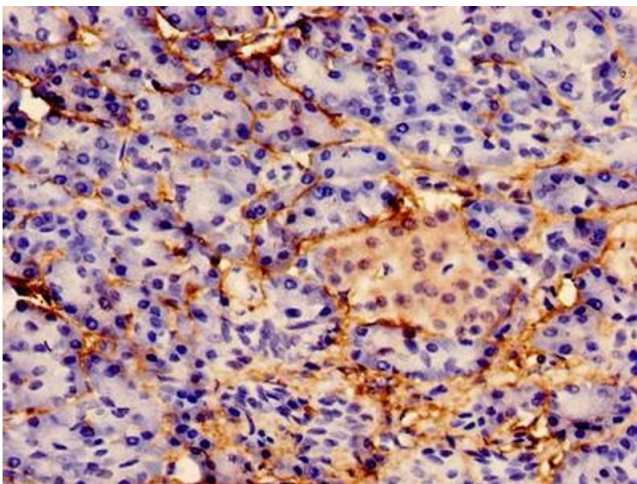
Immunohistochemistry

Image 1. IHC image of ABIN7156203 diluted at 1:500 and staining in paraffin-embedded human kidney tissue performed on a Leica Bond™ system. After dewaxing and hydration, antigen retrieval was mediated by high pressure in a citrate buffer (pH 6.0). Section was blocked with 10% normal goat serum 30min at RT. Then primary antibody (1% BSA) was incubated at 4°C overnight. The primary is detected by a biotinylated secondary antibody and visualized using an HRP conjugated SP system.



Immunofluorescence

Image 2. Immunofluorescent analysis of HepG2 cells using ABIN7156203 at dilution of 1:100 and Alexa Fluor 488-conjugated AffiniPure Goat Anti-Rabbit IgG(H+L)



Immunocytochemistry

Image 3. Immunocytochemistry analysis of human pancreatic tissue using ABIN7156203 at dilution of 1:100

Please check the [product details page](#) for more images. Overall 4 images are available for ABIN7156203.