



[Go to Product page](#)

Datasheet for ABIN7156211  
**anti-IDO2 antibody (AA 1-407)**

3 Images

Overview

Quantity:	100 µg
Target:	IDO2
Binding Specificity:	AA 1-407
Reactivity:	Human
Host:	Rabbit
Clonality:	Polyclonal
Conjugate:	This IDO2 antibody is un-conjugated
Application:	ELISA, Immunohistochemistry (IHC), Immunofluorescence (IF)

Product Details

Immunogen:	Recombinant Human Indoleamine 2,3-dioxygenase 2 protein (1-407AA)
Isotype:	IgG
Cross-Reactivity:	Human
Purification:	>95%, Protein G purified

Target Details

Target:	IDO2
Alternative Name:	IDO2 ( <a href="#">IDO2 Products</a> )
Background:	Background: Catalyzes the first and rate-limiting step in the kynurenine pathway of tryptophan catabolism.

## Target Details

---

Aliases: 3-dioxygenase 2 antibody, 3-dioxygenase-like protein 1 antibody, EC 1.13.11. antibody, I2302\_HUMAN antibody, IDO 2 antibody, IDO-2 antibody, Ido2 antibody, INDOL 1 antibody, Indoleamine 2 antibody, Indoleamine 2,3 dioxygenase 2 antibody, Indoleamine 2,3 dioxygenase like 1 protein antibody, Indoleamine 2,3 dioxygenase like protein 1 antibody, Indoleamine pyrrole 2,3 dioxygenase like 1 antibody, Indoleamine pyrrole 2,3 dioxygenase like protein 1 antibody, Indoleamine-pyrrole 2 antibody

UniProt: [Q6ZQW0](#)

## Application Details

---

Application Notes: Recommended dilution: IHC:1:20-1:200, IF:1:50-1:200,

Restrictions: For Research Use only

## Handling

---

Format: Liquid

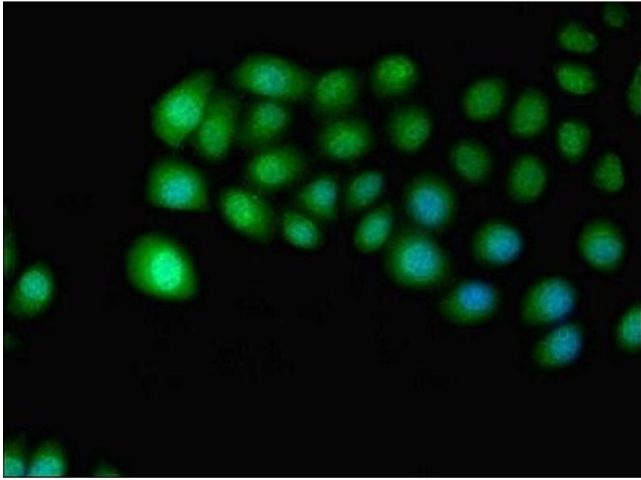
Buffer: Preservative: 0.03 % Proclin 300  
Constituents: 50 % Glycerol, 0.01M PBS, PH 7.4

Preservative: ProClin

Precaution of Use: This product contains ProClin: a POISONOUS AND HAZARDOUS SUBSTANCE which should be handled by trained staff only.

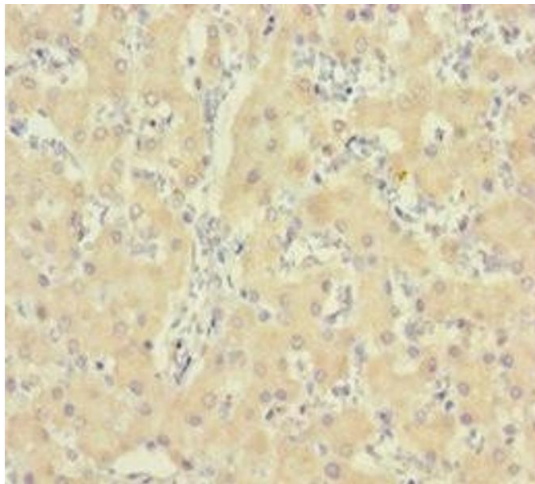
Storage: -20 °C,-80 °C

Storage Comment: Upon receipt, store at -20°C or -80°C. Avoid repeated freeze.



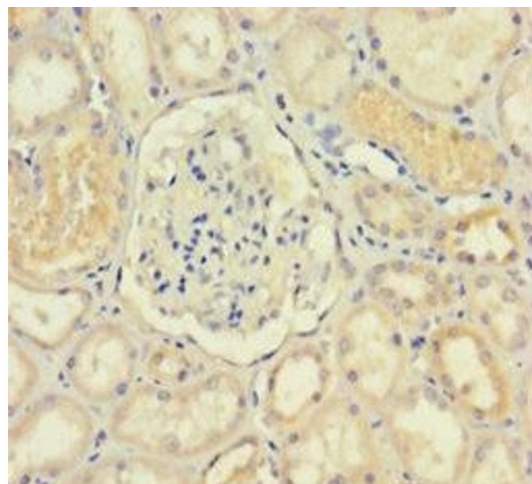
#### Immunofluorescence

**Image 1.** Immunofluorescent analysis of A549 cells using ABIN7156211 at dilution of 1:100 and Alexa Fluor 488-conjugated AffiniPure Goat Anti-Rabbit IgG(H+L)



#### Immunohistochemistry

**Image 2.** Immunohistochemistry of paraffin-embedded human liver tissue using ABIN7156211 at dilution of 1:100



#### Immunohistochemistry

**Image 3.** Immunohistochemistry of paraffin-embedded human kidney tissue using ABIN7156211 at dilution of 1:100