

Datasheet for ABIN7156215
anti-INMT antibody (AA 1-263)[Go to Product page](#)

3 Images

Overview

Quantity:	100 µg
Target:	INMT
Binding Specificity:	AA 1-263
Reactivity:	Human
Host:	Rabbit
Clonality:	Polyclonal
Conjugate:	This INMT antibody is un-conjugated
Application:	ELISA, Western Blotting (WB), Immunohistochemistry (IHC), Immunofluorescence (IF)

Product Details

Immunogen:	Recombinant Human Indolethylamine N-methyltransferase protein (1-263AA)
Isotype:	IgG
Cross-Reactivity:	Human, Mouse
Purification:	>95%, Protein G purified

Target Details

Target:	INMT
Alternative Name:	INMT (INMT Products)
Background:	Amine N methyltransferase antibody, Amine N-methyltransferase antibody, Aromatic alkylamine N methyltransferase antibody, Aromatic alkylamine N-methyltransferase antibody,

Target Details

Arylamine N methyltransferase antibody, Arylamine N-methyltransferase antibody, Indolamine N-methyltransferase antibody, Indolethylamine N methyltransferase antibody, Indolethylamine N-methyltransferase antibody, Inmt antibody, INMT_HUMAN antibody, nicotine N methyltransferase antibody, TEMT antibody, thioester S methyltransferase like antibody, Thioether S methyltransferase antibody

UniProt: [O95050](#)

Application Details

Application Notes: Recommended dilution: WB:1:1000-1:5000, IHC:1:20-1:200, IF:1:50-1:200,

Restrictions: For Research Use only

Handling

Format: Liquid

Buffer: Preservative: 0.03 % Proclin 300
Constituents: 50 % Glycerol, 0.01M PBS, PH 7.4

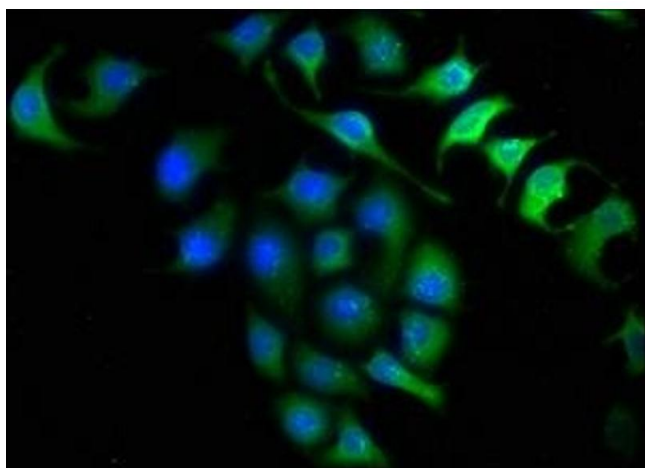
Preservative: ProClin

Precaution of Use: This product contains ProClin: a POISONOUS AND HAZARDOUS SUBSTANCE which should be handled by trained staff only.

Storage: -20 °C,-80 °C

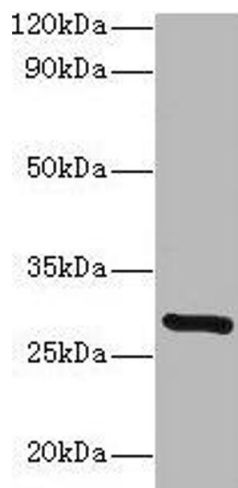
Storage Comment: Upon receipt, store at -20°C or -80°C. Avoid repeated freeze.

Images



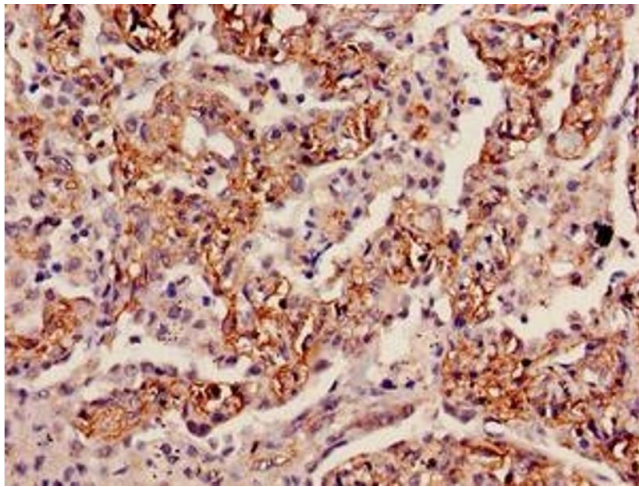
Immunofluorescence

Image 1. Immunofluorescence staining of A549 cells with ABIN7156215 at 1:150, counter-stained with DAPI. The cells were fixed in 4% formaldehyde, permeabilized using 0.2% Triton X-100 and blocked in 10% normal Goat Serum. The cells were then incubated with the antibody overnight at 4°C. The secondary antibody was Alexa Fluor 488-conjugated AffiniPure Goat Anti-Rabbit IgG(H+L).



Western Blotting

Image 2. Western blot All lanes: INMT antibody at 2 µg/mL + Mouse lung tissue Secondary Goat polyclonal to rabbit IgG at 1/15000 dilution Predicted band size: 29 kDa Observed band size: 29 kDa



Immunohistochemistry

Image 3. Immunohistochemistry of paraffin-embedded human lung cancer using ABIN7156215 at dilution of 1:100