

Datasheet for ABIN7156219
anti-MCL-1 antibody (AA 19-244)

4 Images

[Go to Product page](#)

Overview

Quantity:	100 µg
Target:	MCL-1 (MCL1)
Binding Specificity:	AA 19-244
Reactivity:	Human
Host:	Rabbit
Clonality:	Polyclonal
Conjugate:	This MCL-1 antibody is un-conjugated
Application:	Western Blotting (WB), ELISA, Immunohistochemistry (IHC), Immunofluorescence (IF)

Product Details

Immunogen:	Recombinant Human Induced myeloid leukemia cell differentiation protein Mcl-1 protein (19-244AA)
Isotype:	IgG
Cross-Reactivity:	Human
Purification:	>95%, Protein G purified

Target Details

Target:	MCL-1 (MCL1)
Alternative Name:	MCL1 (MCL1 Products)
Background:	Background: Involved in the regulation of apoptosis versus cell survival, and in the maintenance

Target Details

of viability but not of proliferation. Mediates its effects by interactions with a number of other regulators of apoptosis. Isoform 1 inhibits apoptosis. Isoform 2 promotes apoptosis.

Aliases: Bcl 2 related protein EAT/mcl1 antibody, Bcl-2-like protein 3 antibody, Bcl-2-related protein EAT/mcl1 antibody, BCL2 related antibody, Bcl2-L-3 antibody, BCL2L3 antibody, EAT antibody, Induced myeloid leukemia cell differentiation protein Mcl 1 antibody, Induced myeloid leukemia cell differentiation protein Mcl-1 antibody, MCL 1 antibody, MCL1 antibody, MCL1-ES antibody, mcl1/EAT antibody, MCL1_HUMAN antibody, MCL1L antibody, MCL1S antibody, MGC104264 antibody, MGC1839 antibody, Myeloid Cell Leukemia 1 antibody, Myeloid cell leukemia ES antibody, Myeloid cell leukemia sequence 1 antibody, Myeloid cell leukemia sequence 1 BCL2 related antibody, Myeloid cell leukemia sequence 1 isoform 1 antibody, OTTHUMP00000032794 antibody, OTTHUMP00000032795 antibody, TM antibody

UniProt: [Q07820](#)

Pathways: [MAPK Signaling](#)

Application Details

Application Notes: Recommended dilution: WB:1:1000-1:5000, IHC:1:20-1:200, IF:1:50-1:200,

Restrictions: For Research Use only

Handling

Format: Liquid

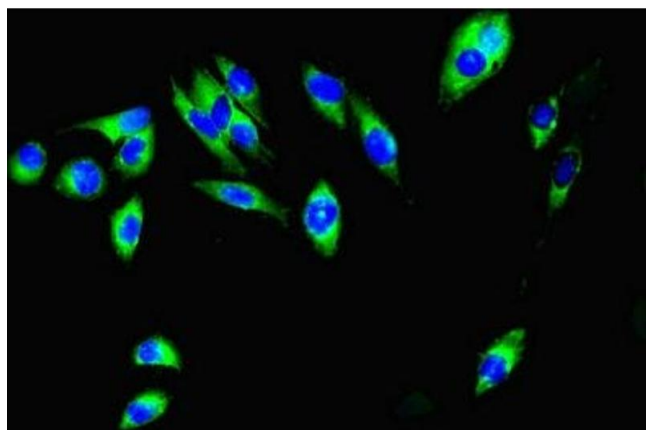
Buffer: Preservative: 0.03 % Proclin 300
Constituents: 50 % Glycerol, 0.01M PBS, PH 7.4

Preservative: ProClin

Precaution of Use: This product contains ProClin: a POISONOUS AND HAZARDOUS SUBSTANCE which should be handled by trained staff only.

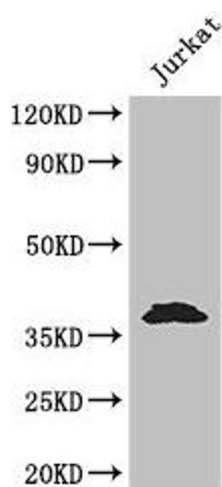
Storage: -20 °C,-80 °C

Storage Comment: Upon receipt, store at -20°C or -80°C. Avoid repeated freeze.



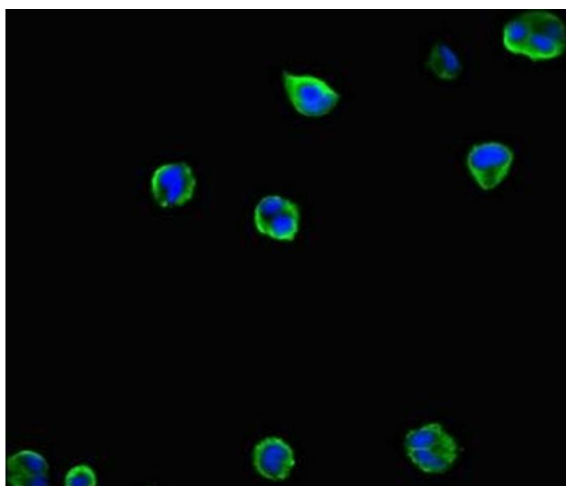
Immunofluorescence

Image 1. Immunofluorescent analysis of HeLa cells using ABIN7156219 at dilution of 1:100 and Alexa Fluor 488-conjugated AffiniPure Goat Anti-Rabbit IgG(H+L)



Western Blotting

Image 2. Western Blot Positive WB detected in: Jurkat whole cell lysate All lanes: MCL1 antibody at 3.2 µg/mL Secondary Goat polyclonal to rabbit IgG at 1/50000 dilution Predicted band size: 38, 29 kDa Observed band size: 38 kDa



Immunofluorescence

Image 3. Immunofluorescent analysis of MCF-7 cells using ABIN7156219 at dilution of 1:100 and Alexa Fluor 488-conjugated AffiniPure Goat Anti-Rabbit IgG(H+L)

Please check the [product details page](#) for more images. Overall 4 images are available for ABIN7156219.