

Datasheet for ABIN7156231  
**anti-Inhibin alpha antibody (AA 233-366)**



[Go to Product page](#)

1 Image

## Overview

Quantity:	100 µg
Target:	Inhibin alpha (INHA)
Binding Specificity:	AA 233-366
Reactivity:	Human
Host:	Rabbit
Clonality:	Polyclonal
Conjugate:	This Inhibin alpha antibody is un-conjugated
Application:	Immunohistochemistry (IHC), ELISA

## Product Details

Immunogen:	Recombinant Human Inhibin alpha chain protein (233-366AA)
Isotype:	IgG
Cross-Reactivity:	Human
Purification:	>95%, Protein G purified

## Target Details

Target:	Inhibin alpha (INHA)
Alternative Name:	INHA ( <a href="#">INHA Products</a> )
Background:	Background: Inhibins and activins inhibit and activate, respectively, the secretion of follitropin by the pituitary gland. Inhibins/activins are involved in regulating a number of diverse functions

## Target Details

---

such as hypothalamic and pituitary hormone secretion, gonadal hormone secretion, germ cell development and maturation, erythroid differentiation, insulin secretion, nerve cell survival, embryonic axial development or bone growth, depending on their subunit composition. Inhibins appear to oppose the functions of activins.

Aliases: A inhibin subunit antibody, A inhibin subunit precursor antibody, AW55578 antibody, IHA antibody, inhA antibody, INHA\_HUMAN antibody, Inhibin alpha chain antibody, Inhibin alpha chain precursor antibody, Inhibin alpha subunit antibody

---

UniProt: [P05111](#)

---

Pathways: [Peptide Hormone Metabolism](#), [Hormone Activity](#), [Negative Regulation of Hormone Secretion](#)

## Application Details

---

Application Notes: Recommended dilution: IHC:1:20-1:200,

---

Restrictions: For Research Use only

## Handling

---

Format: Liquid

---

Buffer: Preservative: 0.03 % Proclin 300  
Constituents: 50 % Glycerol, 0.01M PBS, PH 7.4

---

Preservative: ProClin

---

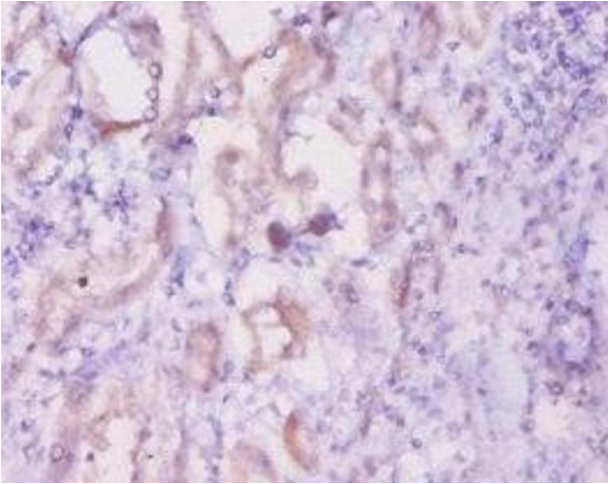
Precaution of Use: This product contains ProClin: a POISONOUS AND HAZARDOUS SUBSTANCE which should be handled by trained staff only.

---

Storage: -20 °C,-80 °C

---

Storage Comment: Upon receipt, store at -20°C or -80°C. Avoid repeated freeze.



#### Immunohistochemistry

**Image 1.** Immunohistochemistry of paraffin-embedded human kidney tissue using at dilution of 1:20