

Datasheet for ABIN7156271
anti-PPA2 antibody (AA 180-298)[Go to Product page](#)

2 Images

Overview

Quantity:	100 µg
Target:	PPA2
Binding Specificity:	AA 180-298
Reactivity:	Human
Host:	Rabbit
Clonality:	Polyclonal
Conjugate:	This PPA2 antibody is un-conjugated
Application:	Western Blotting (WB), ELISA, Immunohistochemistry (IHC)

Product Details

Immunogen:	Recombinant Human Inorganic pyrophosphatase 2, mitochondrial protein (180-298AA)
Isotype:	IgG
Cross-Reactivity:	Human, Mouse, Rat
Purification:	>95%, Protein G purified

Target Details

Target:	PPA2
Alternative Name:	PPA2 (PPA2 Products)
Background:	Background: Hydrolyzes inorganic pyrophosphate (PubMed:27523597). This activity is essential for correct regulation of mitochondrial membrane potential, and mitochondrial

Target Details

organization and function (PubMed:27523598).

Aliases: HSPC124 antibody, Inorganic pyrophosphatase 2 antibody, Inorganic pyrophosphatase 2, mitochondrial antibody, IPYR2_HUMAN antibody, mitochondrial antibody, Ppa2 antibody, PPase 2 antibody, PPase2 antibody, Pyrophosphatase (inorganic) 2 antibody, Pyrophosphatase SID6 306 antibody, Pyrophosphatase SID6-306 antibody, Pyrophosphate phospho-hydrolase 2 antibody, SID6 306 antibody

UniProt: [Q9H2U2](#)

Application Details

Application Notes: Recommended dilution: WB:1:500-1:5000, IHC:1:200-1:500,

Restrictions: For Research Use only

Handling

Format: Liquid

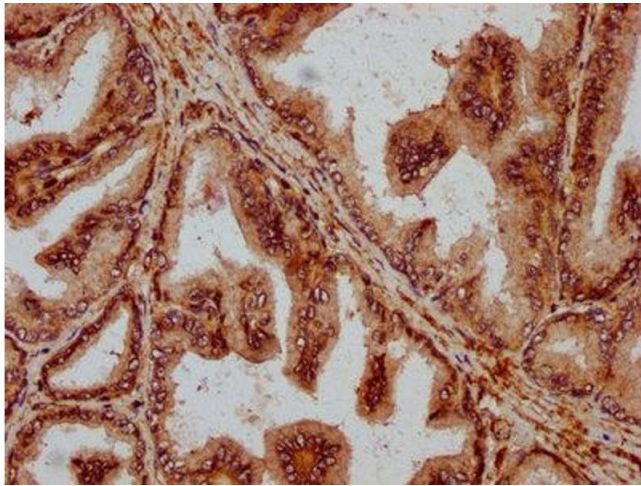
Buffer: Preservative: 0.03 % Proclin 300
Constituents: 50 % Glycerol, 0.01M PBS, pH 7.4

Preservative: ProClin

Precaution of Use: This product contains ProClin: a POISONOUS AND HAZARDOUS SUBSTANCE which should be handled by trained staff only.

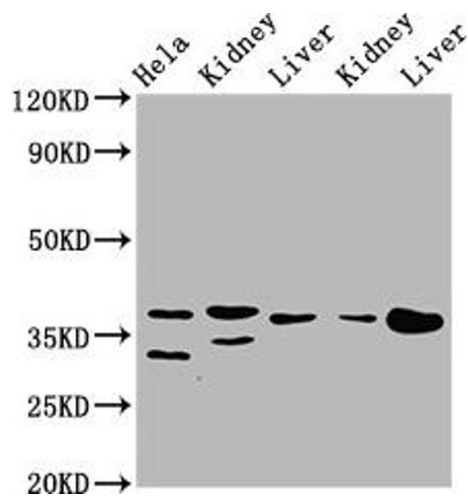
Storage: -20 °C,-80 °C

Storage Comment: Upon receipt, store at -20°C or -80°C. Avoid repeated freeze.



Immunohistochemistry

Image 1. IHC image of ABIN7156271 diluted at 1:200 and staining in paraffin-embedded human prostate tissue performed on a Leica Bond™ system. After dewaxing and hydration, antigen retrieval was mediated by high pressure in a citrate buffer (pH 6.0). Section was blocked with 10% normal goat serum 30min at RT. Then primary antibody (1% BSA) was incubated at 4°C overnight. The primary is detected by a biotinylated secondary antibody and visualized using an HRP conjugated SP system.



Western Blotting

Image 2. Western Blot Positive WB detected in: HeLa whole cell lysate, Rat kidney tissue, Rat liver tissue, Mouse kidney tissue, Mouse liver tissue All lanes: PPA2 antibody at 3.1 µg/mL Secondary Goat polyclonal to rabbit IgG at 1/50000 dilution Predicted band size: 38, 40, 35, 19, 26 kDa Observed band size: 38 kDa