



Datasheet for ABIN7156276

## anti-Pyrophosphatase (Inorganic) 1 (PPA1) (AA 59-173) antibody



[Go to Product page](#)

### 3 Images

#### Overview

Quantity:	100 µg
Target:	Pyrophosphatase (Inorganic) 1 (PPA1)
Binding Specificity:	AA 59-173
Reactivity:	Human
Host:	Rabbit
Clonality:	Polyclonal
Conjugate:	Un-conjugated
Application:	ELISA, Immunohistochemistry (IHC), Immunofluorescence (IF)

#### Product Details

Immunogen:	Recombinant Human Inorganic pyrophosphatase protein (59-173AA)
Isotype:	IgG
Cross-Reactivity:	Human
Purification:	>95%, Protein G purified

#### Target Details

Target:	Pyrophosphatase (Inorganic) 1 (PPA1)
Alternative Name:	PPA1 ( <a href="#">PPA1 Products</a> )
Target Type:	Viral Protein
Background:	Background: cytoplasm, cytosol, extracellular exosome, inorganic diphosphatase activity,

## Target Details

---

diphosphate metabolic process, phosphate-containing compound metabolic process, tRNA aminoacylation for protein translation

Aliases: cytosolic inorganic pyrophosphatase antibody, diphosphate phosphohydrolase antibody, inorganic diphosphatase antibody, inorganic pyrophosphatase 1 antibody, Inorganic pyrophosphatase antibody, IOPPP antibody, IPYR\_HUMAN antibody, PP antibody, PP1 antibody, PPA1 antibody, PPase antibody, Pyp antibody, pyrophosphatase, inorganic, 1 antibody, Pyrophosphate phospho hydrolase antibody, Pyrophosphate phospho-hydrolase antibody, SID6-8061 antibody

---

UniProt: [Q15181](#)

## Application Details

---

Application Notes: Recommended dilution: IHC:1:200-1:500, IF:1:50-1:200,

Restrictions: For Research Use only

## Handling

---

Format: Liquid

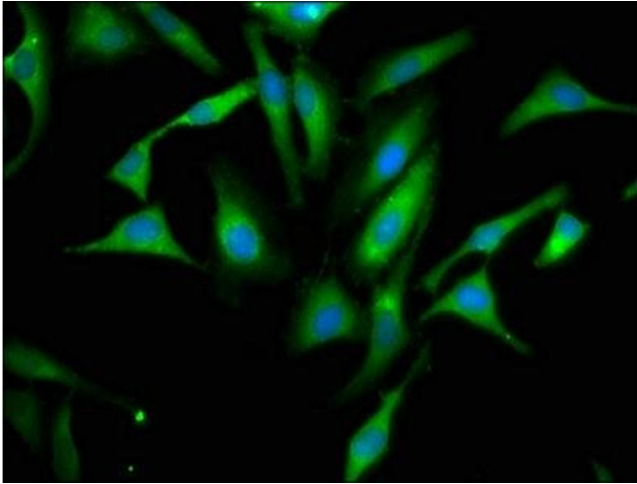
Buffer: Preservative: 0.03 % Proclin 300  
Constituents: 50 % Glycerol, 0.01M PBS, pH 7.4

Preservative: ProClin

Precaution of Use: This product contains ProClin: a POISONOUS AND HAZARDOUS SUBSTANCE which should be handled by trained staff only.

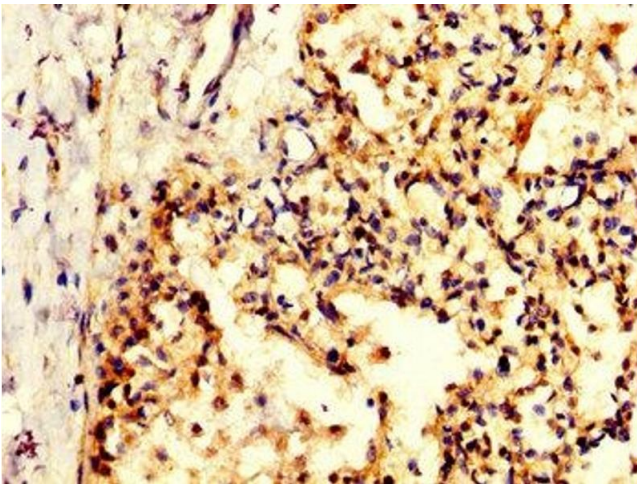
Storage: -20 °C,-80 °C

Storage Comment: Upon receipt, store at -20°C or -80°C. Avoid repeated freeze.



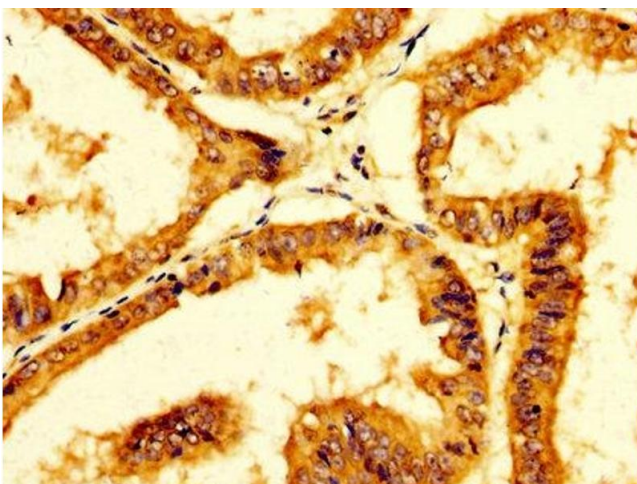
#### Immunofluorescence

**Image 1.** Immunofluorescence staining of HeLa cells with ABIN7156276 at 1:66, counter-stained with DAPI. The cells were fixed in 4% formaldehyde, permeabilized using 0.2% Triton X-100 and blocked in 10% normal Goat Serum. The cells were then incubated with the antibody overnight at 4°C. The secondary antibody was Alexa Fluor 488-conjugated AffiniPure Goat Anti-Rabbit IgG(H+L).



#### Immunohistochemistry

**Image 2.** IHC image of ABIN7156276 diluted at 1:200 and staining in paraffin-embedded human lung tissue performed on a Leica Bond™ system. After dewaxing and hydration, antigen retrieval was mediated by high pressure in a citrate buffer (pH 6.0). Section was blocked with 10% normal goat serum 30min at RT. Then primary antibody (1% BSA) was incubated at 4°C overnight. The primary is detected by a biotinylated secondary antibody and visualized using an HRP conjugated SP system.



#### Immunohistochemistry

**Image 3.** IHC image of ABIN7156276 diluted at 1:200 and staining in paraffin-embedded human endometrial cancer performed on a Leica Bond™ system. After dewaxing and hydration, antigen retrieval was mediated by high pressure in a citrate buffer (pH 6.0). Section was blocked with 10% normal goat serum 30min at RT. Then primary antibody (1% BSA) was incubated at 4°C overnight. The primary is detected by a biotinylated secondary antibody and visualized using an HRP conjugated SP system.