



Datasheet for ABIN7156297  
**anti-ITPRIPL2 antibody (AA 75-288)**



[Go to Product page](#)

2 Images

Overview

|                      |   |
|----------------------|---|
| Quantity:            | 100 µL  |
| Target:              | ITPRIPL2  |
| Binding Specificity: | AA 75-288   |
| Reactivity:          | Human   |
| Host:                | Rabbit  |
| Clonality:           | Polyclonal  |
| Conjugate:           | This ITPRIPL2 antibody is un-conjugated               |
| Application:         | ELISA, Western Blotting (WB), Immunofluorescence (IF) |

Product Details

|                   |   |
|-------------------|---|
| Immunogen:        | Recombinant Human Inositol 1,4,5-trisphosphate receptor-interacting protein-like 2 protein (75-288AA) |
| Isotype:          | IgG   |
| Cross-Reactivity: | Human   |
| Purification:     | >95%, Protein G purified  |

Target Details

|                   |  |
|-------------------|--|
| Target:           | ITPRIPL2   |
| Alternative Name: | ITPRIPL2 ( <a href="#">ITPRIPL2 Products</a> )   |
| Background:       | ITPRIPL2 antibody, Inositol 1,4,5-trisphosphate receptor-interacting protein-like 2 antibody |

## Target Details

---

UniProt: [Q3MIP1](#)

## Application Details

---

Application Notes: Recommended dilution: WB:1:1000-1:5000, IF:1:100-1:500,

Restrictions: For Research Use only

## Handling

---

Format: Liquid

Buffer: Preservative: 0.03 % Proclin 300  
Constituents: 50 % Glycerol, 0.01M PBS, PH 7.4

Preservative: ProClin

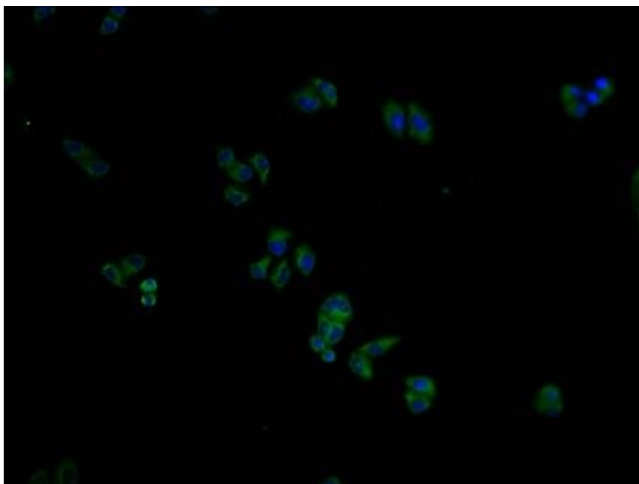
Precaution of Use: This product contains ProClin: a POISONOUS AND HAZARDOUS SUBSTANCE which should be handled by trained staff only.

Storage: -20 °C,-80 °C

Storage Comment: Upon receipt, store at -20°C or -80°C. Avoid repeated freeze.

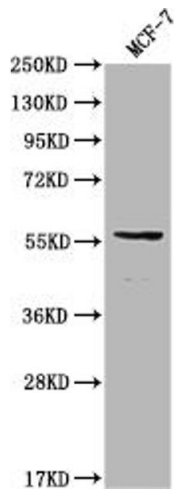
## Images

---



### Immunofluorescence

**Image 1.** Immunofluorescence staining of HeLa cells with ABIN7156297 at 1:100, counter-stained with DAPI. The cells were fixed in 4 % formaldehyde and blocked in 10 % normal Goat Serum. The cells were then incubated with the antibody overnight at 4 °C. The secondary antibody was Alexa Fluor 488-conjugated AffiniPure Goat Anti-Rabbit IgG(H+L).



### Western Blotting

**Image 2.** Western Blot Positive WB detected in: MCF-7 whole cell lysate All lanes: ITPRIPL2 antibody at 1:2000 Secondary Goat polyclonal to rabbit IgG at 1/50000 dilution Predicted band size: 59 kDa Observed band size: 59 kDa