



[Go to Product page](#)

Datasheet for ABIN7156320
anti-ITPK1 antibody (AA 185-414)

3 Images

Overview

Quantity:	100 µL
Target:	ITPK1
Binding Specificity:	AA 185-414
Reactivity:	Human
Host:	Rabbit
Clonality:	Polyclonal
Conjugate:	This ITPK1 antibody is un-conjugated
Application:	Western Blotting (WB), ELISA, Immunohistochemistry (IHC)

Product Details

Immunogen:	Recombinant Human Inositol-tetrakisphosphate 1-kinase protein (185-414AA)
Isotype:	IgG
Cross-Reactivity:	Human
Purification:	Antigen Affinity Purified

Target Details

Target:	ITPK1
Alternative Name:	ITPK1 (ITPK1 Products)
Background:	Background: Kinase that can phosphorylate various inositol polyphosphate such as Ins(3,4,5,6)P4 or Ins(1,3,4)P3. Phosphorylates Ins(3,4,5,6)P4 at position 1 to form

Target Details

Ins(1,3,4,5,6)P5. This reaction is thought to have regulatory importance, since Ins(3,4,5,6)P4 is an inhibitor of plasma membrane Ca(2+)-activated Cl(-) channels, while Ins(1,3,4,5,6)P5 is not. Also phosphorylates Ins(1,3,4)P3 on O-5 and O-6 to form Ins(1,3,4,6)P4, an essential molecule in the hexakisphosphate (InsP6) pathway. Also acts as an inositol polyphosphate phosphatase that dephosphorylates Ins(1,3,4,5)P4 and Ins(1,3,4,6)P4 to Ins(1,3,4)P3, and Ins(1,3,4,5,6)P5 to Ins(3,4,5,6)P4. May also act as an isomerase that interconverts the inositol tetrakisphosphate isomers Ins(1,3,4,5)P4 and Ins(1,3,4,6)P4 in the presence of ADP and magnesium. Probably acts as the rate-limiting enzyme of the InsP6 pathway. Modifies TNF-alpha-induced apoptosis by interfering with the activation of TNFRSF1A-associated death domain.

Aliases: 3 antibody, 4)P(3) 5/6-kinase antibody, 4-trisphosphate 5/6-kinase antibody, Inositol 1 3 4 triphosphate 5/6 kinase antibody, Inositol 1 3 4 trisphosphate 5/6 kinase antibody, Inositol 1 3 4 trisphosphate 5/6 kinase antibody, Inositol 1 3 4 trisphosphate 5/6 kinase antibody, Inositol 1 3 4 trisphosphate 5/6 kinase antibody, Inositol tetrakisphosphate 1 kinase antibody, Inositol triphosphate 5/6 kinase antibody, Inositol-tetrakisphosphate 1-kinase antibody, Inositol-triphosphate 5/6-kinase antibody, Ins(1 3 4)P(3) 5/6 kinase antibody, Ins(1 antibody, ITPK 1 antibody, itpk1 antibody, ITPK1_HUMAN antibody, ITRPK 1 antibody, ITRPK1 antibody

UniProt: [Q13572](#)

Application Details

Application Notes: Recommended dilution: WB:1:1000-1:5000, IHC:1:20-1:200,

Restrictions: For Research Use only

Handling

Format: Liquid

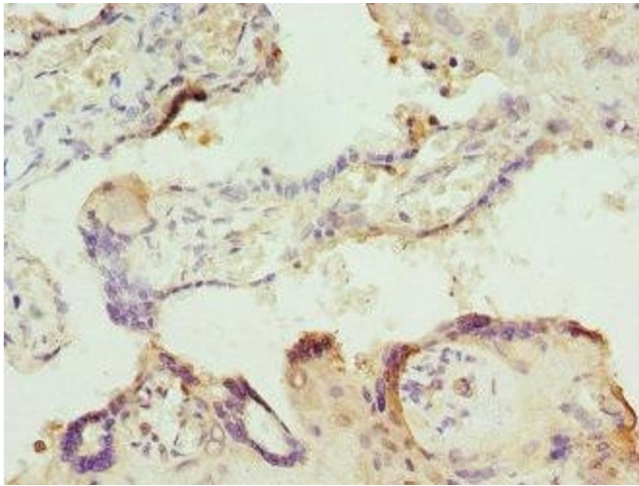
Buffer: PBS with 0.02 % sodium azide, 50 % glycerol, pH 7.3.

Preservative: Sodium azide

Precaution of Use: This product contains Sodium azide: a POISONOUS AND HAZARDOUS SUBSTANCE which should be handled by trained staff only.

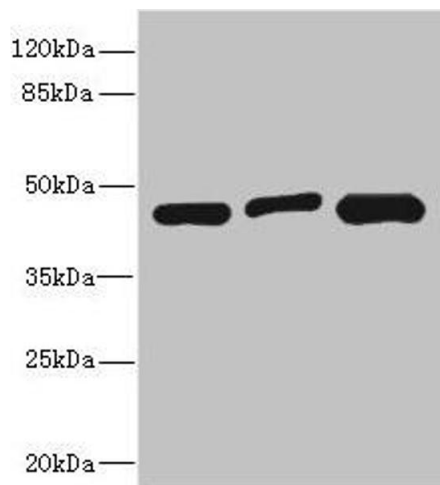
Storage: -20 °C,-80 °C

Storage Comment: Upon receipt, store at -20°C or -80°C. Avoid repeated freeze.



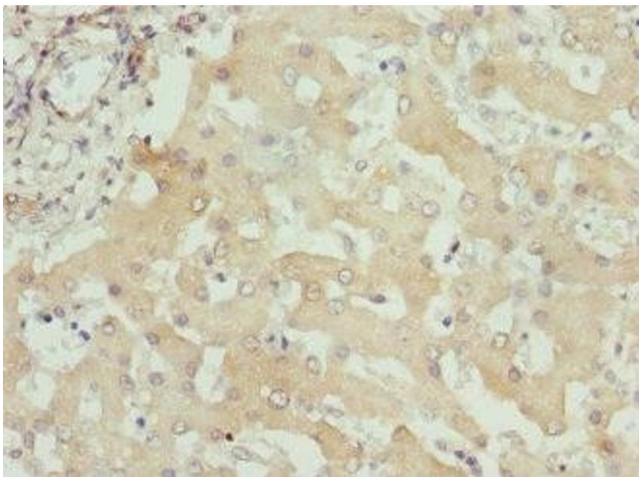
Immunohistochemistry

Image 1. Immunohistochemistry of paraffin-embedded human placenta tissue using ABIN7156320 at dilution of 1:100



Western Blotting

Image 2. Western blot All lanes: ITPK1 antibody at 3.58 μ g/mL Lane 1: HeLa whole cell lysate Lane 2: HepG2 whole cell lysate Lane 3: A431 whole cell lysate Secondary Goat polyclonal to rabbit IgG at 1/10000 dilution Predicted band size: 46, 36 kDa Observed band size: 46 kDa



Immunohistochemistry

Image 3. Immunohistochemistry of paraffin-embedded human liver tissue using ABIN7156320 at dilution of 1:100